

CERTIFICATE OF LOCATION OF GOVERNMENT CORNER

N.W. Corner of Section 31, Township 41, Range 24, 4TH P.M.

STATE OF MINNESOTA, County of KANABEC

A 1/2" IRON PIPE ON TOP OF D.O.T. CONC. MON.

Kanabec County U.S. Survey Feet Coordinates
 NAD 1983, HARN 1996 Adjustment
 Obtained by RTK GPS Observation

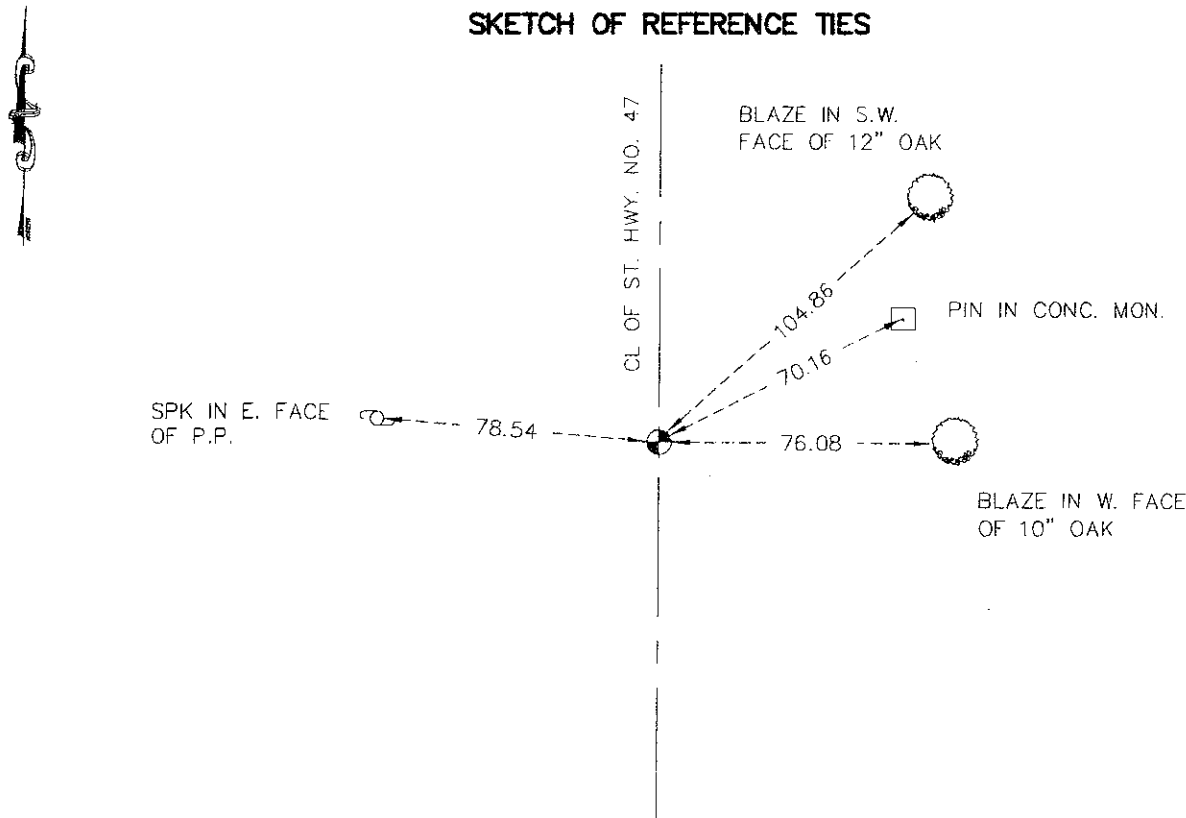
Northing= 197481.56

Easting= 364632.11

Note: NAD 1983, HARN 1996 Adjustment
 coordinates are NOT compatible with
 NAD 1983 coordinates

Note: 1 Meter=3937/1200 U.S. Survey Feet

SKETCH OF REFERENCE TIES



Statement of evidence relative to this corner location is on back of page.

I hereby certify that this document and the data contained herein was prepared by me or under my direct supervision.

Ernest Lund
 Signature

6-02-2009
 Date

Registration No. 9808

- Land Surveyor, Professional Engineer
 County Surveyor, County Engineer

OFFICE OF THE COUNTY RECORDER

County of _____

I hereby certify that this document was filed in the County Recorder's office at _____ M. on the _____ day of _____ A.D., 20____

County Recorder _____

BY _____ Deputy

DOCUMENT NO. _____

N.W.1/4 CORNER SECTION 31, TOWNSHIP 41, RANGE 24

STATEMENT OF EVIDENCE

ALL OF THE ORIGINAL BEARING TREES ARE NOW GONE.

THE MINNESOTA DEPARTMENT OF TRANSPORTATION'S SURVEY RECORDS SHOW FOR HIGHWAY NO. 47 A 1" IRON PIN WAS IN PLACE IN THE CENTER OF NORTH-SOUTH ROAD IN LINE WITH FENCE WEST AT PI STATION 1017+62.9 IN THE ORIGINAL SURVEY FOR STATE HIGHWAY NO. 47.

IN JULY OF 1981, M.B. RUD RAN A SURVEY AROUND SECTIONS 30 AND 31 AND LOCATED THE EXISTING LINES OF OCCUPATION AND MONUMENTATION.

THE DEPARTMENT OF TRANSPORTATION'S RECORD SHOW THAT THE 1" IRON PIN WAS REPLACED WITH A CONCRETE MONUMENT AT PI STATION 1017+62.9 AFTER GRADING OF HIGHWAY NO. 47

ON JULY 28, 1981, M.B. RUD FOUND THE DEPARTMENT OF TRANSPORTATION'S CONCRETE MONUMENT AT PI STATION 1017+62.9 ABOUT 10" BELOW THE SURFACE.

HE ACCEPTED THE CONCRETE MONUMENT AS THE PERPETUATED LOCATION OF THE ORIGINAL CORNER AND SET AN 9" BY 1/2" IRON PIPE ON TOP OF THE CONCRETE MONUMENT.

IN MARCH 2009 E.G. RUD AND SONS RELOCATED THIS CORNER SET BY M.B. RUDE AND ESTABLISHED KANABEC COUNTY COORDINATES USING G.P.S. EQUIPMENT.