

CERTIFICATE OF LOCATION OF GOVERNMENT CORNER

WEST QUARTER Corner of Section 19, Township 41, Range 24, 4TH P.M.

STATE OF MINNESOTA, County of KANABEC

At the corner location shown on the sketch:
On 04/ /2004 Set a Kanabec County Monument.

Kanabec County U.S. Survey Feet Coordinates
NAD 1983, HARN 1996 Adjustment
Obtained by RTK GPS Observation

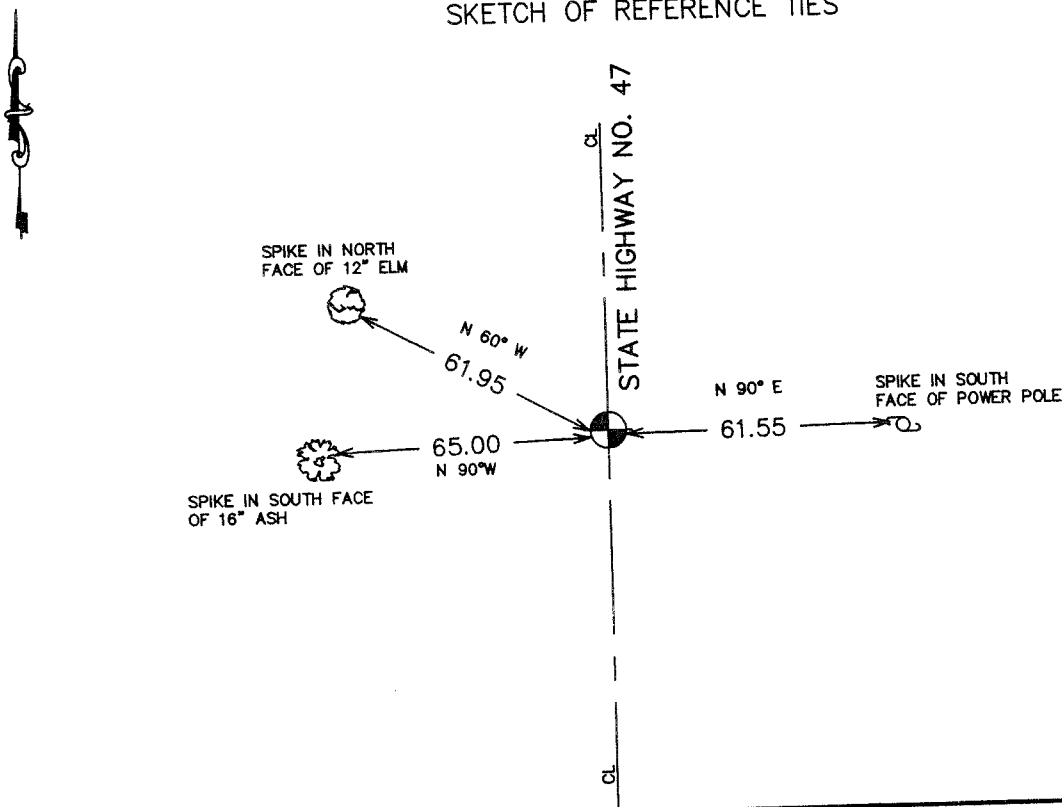
Northing= 205380.43

Easting= 364640.32

Note: NAD 1983, HARN 1996 Adjustment
coordinates are NOT compatible with
NAD 1983 coordinates

Note: 1 Meter=3937/1200 U.S. Survey Feet

SKETCH OF REFERENCE TIES



Statement of evidence relative to this corner location is on back of page.

I hereby certify that this document and the data contained herein was prepared by me or under my direct supervision.

Ernest Reed 7-25-2004
Signature Date

Registration No. 9808

Land Surveyor, Professional Engineer

County Surveyor, County Engineer

OFFICE OF THE COUNTY RECORDER

County of _____

I hereby certify that this document was filed in the County Recorder's office at _____ M. on the _____ day of _____ A.D., 20____

County Recorder _____

BY _____ Deputy

DOCUMENT NO. _____

STATEMENT OF EVIDENCE

The original government corner was set in December 1855, by Government Surveyor Isaac Banker. No evidence of the corner or bearing trees remain. We researched records at Kanabec County and found no subsequent surveys of this section.

The M.H.D. used the centerline of road and a fence line to the east for the corner in the construction of Highway 47 prior to 1956.

In April 2004, we ran a survey around Sections 7, 8, 9, 18 and 19 to tie in existing monumentation and lines of occupation. There was no evidence of the fence line to the east. There was a right of way sign on the west side of Highway 47. We prorated the M.H.D. distance from the Southwest corner of Section 19 to the Northwest corner of Section 7 and placed this corner on line and at a prorated distance. This fell 1 foot south of the right of way sign and on the centerline of Highway 47.

We set a monument and established Kanabec County coordinates on this monument.