

CERTIFICATE OF LOCATION OF GOVERNMENT CORNER

NORTHWEST Corner of Section 19, Township 41, Range 24, 4TH P.M.

STATE OF MINNESOTA, County of KANABEC

At the corner location shown on the sketch:
On 04/ /2004 Set a Kanabec County Monument.

Kanabec County U.S. Survey Feet Coordinates
NAD 1983, HARN 1996 Adjustment
Obtained by RTK GPS Observation

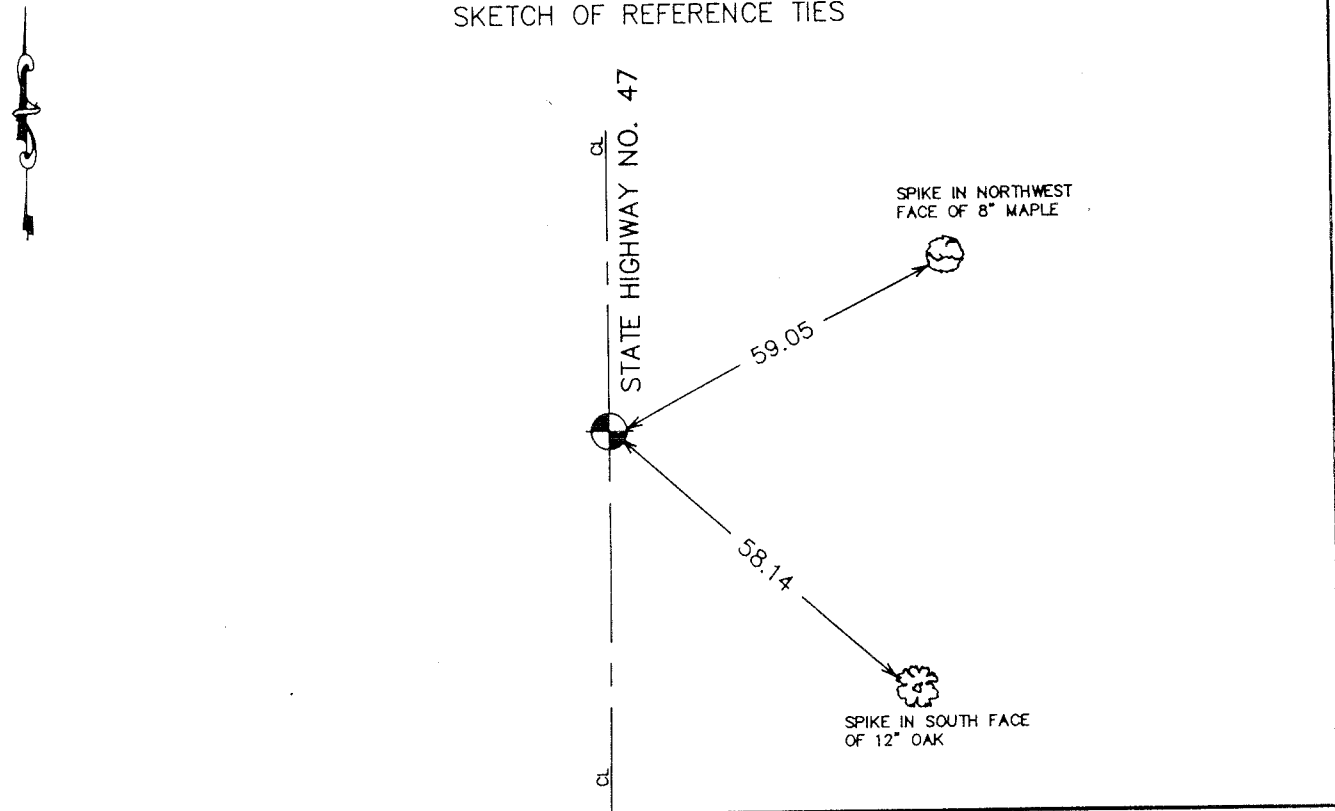
Northing= 208022.44

Easting= 364660.44

Note: NAD 1983, HARN 1996 Adjustment
coordinates are NOT compatible with
NAD 1983 coordinates

Note: 1 Meter=3937/1200 U.S. Survey Feet

SKETCH OF REFERENCE TIES



Statement of evidence relative to this corner location is on back of page.

I hereby certify that this document and the data contained herein was prepared by me or under my direct supervision.

Ernest [Signature]
Signature

7-25-2004
Date

Registration No. 9808

Land Surveyor, Professional Engineer

County Surveyor, County Engineer

OFFICE OF THE COUNTY RECORDER

County of _____

I hereby certify that this document was filed in the County Recorder's office at _____ M. on the

_____ day of _____ A.D., 20____

County Recorder _____

BY _____ Deputy

DOCUMENT NO. _____

STATEMENT OF EVIDENCE

The original government corner was set in December 1855, by Government Surveyor Isaac Banker. No evidence of the corner or bearing trees remain.

The only subsequent surveys we could find was the survey for T. H. 47 done prior to 1956. The right-of-way map indicates finding a 6x10 stone at this corner at that time. This fell in a swampy area and no doubt was subcut out.

In April 2004, we ran a survey around Sections 7, 8, 17, 18 and 19 to tie in existing monumentation and lines of occupation.

We set the Northwest corner of Section 19 on line and at a prorated M.H.D distance between the Northwest corner of Section 18 and the Northwest corner of Section 30. This position fell on the centerline of T.H. #47 and 1.5' south of a fence post to the east. A hole on the centerline was 5'± north of our position.

We took ties and established Kanabec County coordinates on this monument.