

CERTIFICATE OF LOCATION OF GOVERNMENT CORNER

WEST QUARTER Corner of Section 18, Township 41, Range 24, 4TH P.M.

STATE OF MINNESOTA, County of KANABEC

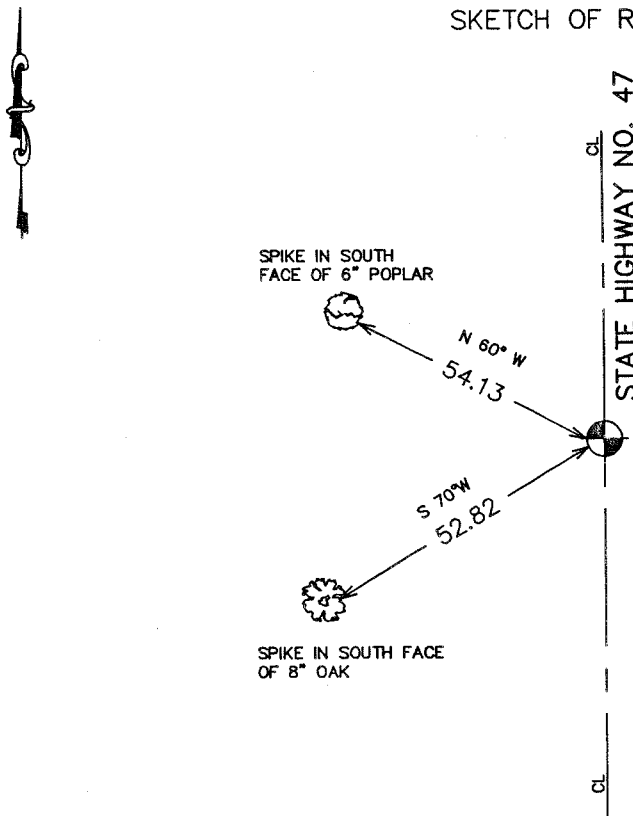
At the corner location shown on the sketch:
On 04/ /2004 Set a Kanabec County Monument.

Kanabec County U.S. Survey Feet Coordinates
NAD 1983, HARN 1996 Adjustment
Obtained by RTK GPS Observation

Northing= 210631.583
Easting= 364680.311

Note: NAD 1983, HARN 1996 Adjustment
coordinates are NOT compatible with
NAD 1983 coordinates
Note: 1 Meter=3937/1200 U.S. Survey Feet

SKETCH OF REFERENCE TIES



Statement of evidence relative to this corner location is on back of page.

I hereby certify that this document and the data contained herein was prepared by me or under my direct supervision.

Ernest J. Reed 7-25-2004
Signature Date

Registration No. 9808

- Land Surveyor, Professional Engineer
 County Surveyor, County Engineer

OFFICE OF THE COUNTY RECORDER

County of _____

I hereby certify that this document was filed in the County Recorder's office at _____ M. on the _____ day of _____ A.D., 20____

County Recorder _____

BY _____ Deputy

DOCUMENT NO. _____

STATEMENT OF EVIDENCE

The original government corner was set in December 1855, by Government Surveyor Isaac Banker. No evidence of the corner or bearing trees remain. We researched records at Kanabec County and found no subsequent surveys of this section.

Prior to 1956, the M.H.D. Right of Way map indicates no monument was found in their survey.

In April 2004, we ran a survey around Sections 7, 8, 17, 18 and 19 to tie in existing monumentation and lines of occupation.

We set this corner on line and at a prorated M.H.D. distance from the Northwest corner of Section 18 to the Northwest corner of Section 30. This fell on the centerline of Highway 47 and 1 foot north of a right-of-way sign on the east side of Highway 47. We took ties and established Kanabec County coordinates on this monument.