

# CERTIFICATE OF LOCATION OF GOVERNMENT CORNER

NORTHWEST CORNER OF SECTION 7, TOWNSHIP 41, RANGE 24, 4TH PM.  
STATE OF MINNESOTA, COUNTY OF KANABEC

AT THE CORNER LOCATION SHOWN ON THE SKETCH:

ON 05/07/03 FOUND  
KANABEC COUNTY CAST IRON MONUMENT

KANABEC COUNTY U.S. SURVEY  
FEET COORDINATES  
NAD 1983, HARN 1996  
ADJUSTMENT OBTAINED BY RTK  
GPS OBSERVATION

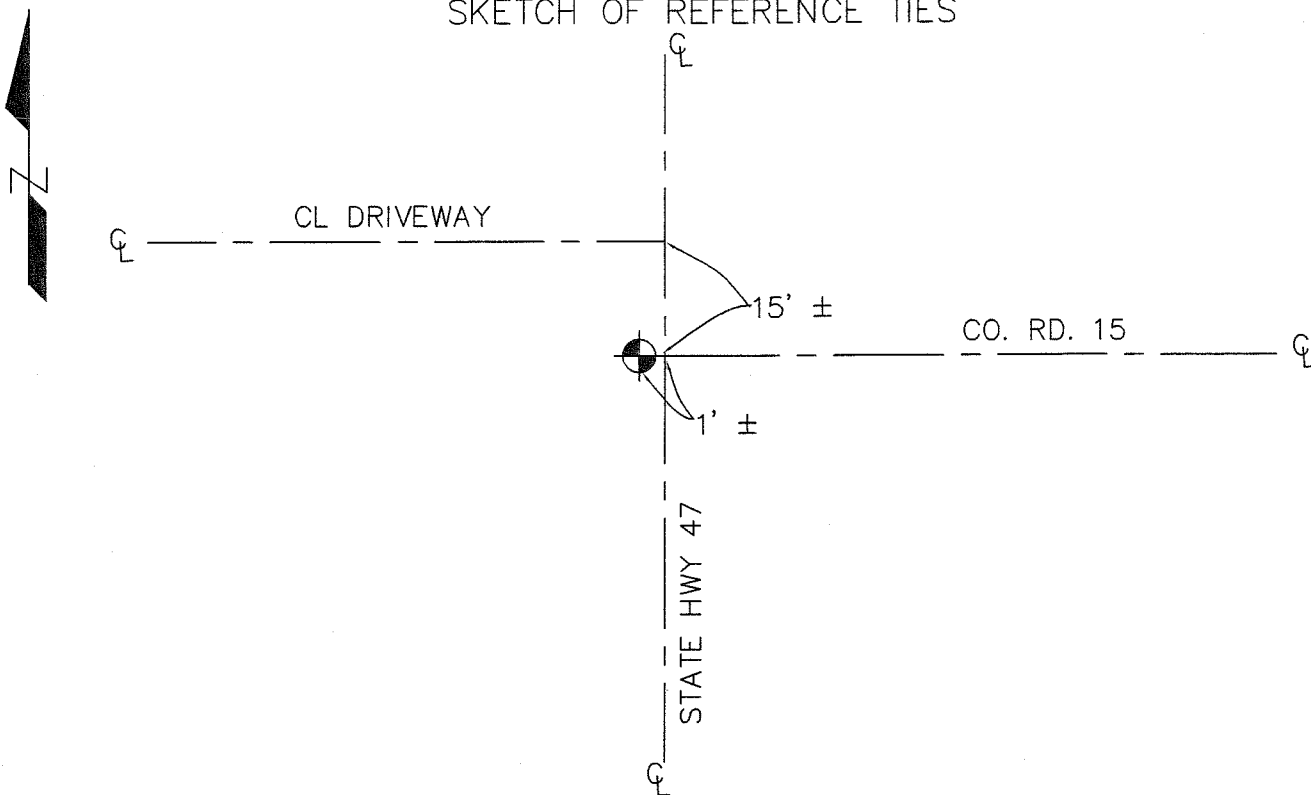
NORTHING= 218474.72

EASTING= 364730.73

NOTE: NAD 1983, HARN 1996  
ADJUSTMENT COORDINATES ARE  
NOT COMPATIBLE WITH NAD 1983  
COORDINATES

NOTE: 1 METER =  $\frac{3937}{4200}$  U.S. SURVEY FEET

## SKETCH OF REFERENCE TIES



STATEMENT OF EVIDENCE RELATIVE TO THIS CORNER LOCATION IS ON THE BACK OF THIS PAGE

I HEREBY CERTIFY THAT THIS DOCUMENT AND THE DATA CONTAINED HEREIN WAS PREPARED BY ME OR UNDER MY DIRECT SUPERVISION.

*Ernest J. Dred*  
SIGNATURE

11-18-2005  
DATE

REGISTRATION NO. Minn No 9808

- LAND SURVEYOR       COUNTY SURVEYOR  
 PROF. ENGINEER       COUNTY ENGINEER

OFFICE OF THE COUNTY RECORDER

COUNTY OF \_\_\_\_\_

I HEREBY CERTIFY THAT THIS DOCUMENT WAS FILED IN THE COUNTY RECORDER'S OFFICE AT \_\_\_\_\_ M. ON THE \_\_\_\_\_ DAY OF \_\_\_\_\_, 2\_\_\_\_.

COUNTY RECORDER \_\_\_\_\_

BY \_\_\_\_\_, DEPUTY

DOCUMENT NO. \_\_\_\_\_

## STATEMENT OF EVIDENCE

---

On May 7, 2003, we found a cast iron monument at centerline intersection of State Hwy 47 and County Road 15. This fits location used by M.B. Rude in 1992.

We established Kanabec County coordinates using GPS equipment and established new ties.

---