

CERTIFICATE OF LOCATION OF GOVERNMENT CORNER

NORTH QUARTER Corner of Section 05, Township 41, Range 24, 4TH P.M.
 STATE OF MINNESOTA, County of KANABEC

At the corner location shown on the sketch:
 IN 2006 SET A KANABEC COUNTY MONUMENT
 AND ESTABLISHED KANABEC COUNTY COORDINATES ON ITS LOCATION.

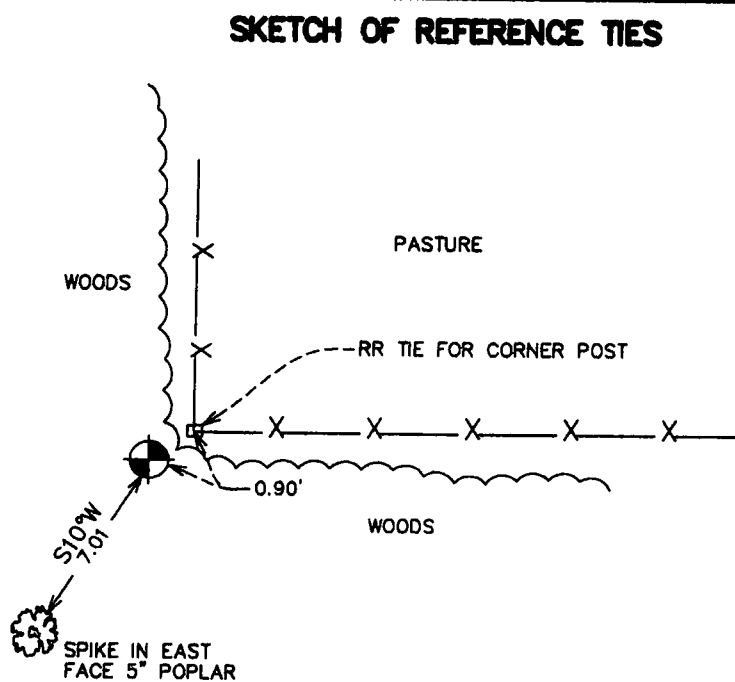
Kanabec County U.S. Survey Feet Coordinates
 NAD 1983, HARN 1996 Adjustment
 Obtained by RTK GPS Observation

Northing= 224048.50
 Easting= 373058.273

Note: NAD 1983, HARN 1996 Adjustment
 coordinates are NOT compatible with
 NAD 1983 coordinates

Note: 1 Meter=3937/1200 U.S. Survey Feet

SKETCH OF REFERENCE TIES



Statement of evidence relative to this corner location is on back of page.

I hereby certify that this document and the data contained herein was prepared by me or under my direct supervision.

Ernest Blud
 Signature

July 15, 2006
 Date

Registration No. Minn No 9808

Land Surveyor, Professional Engineer

County Surveyor, County Engineer

OFFICE OF THE COUNTY RECORDER

County of Kanabec

I hereby certify that this document was filed in the County Recorder's office at 8:00 A.M. on the

20th day of July A.D., 2006

County Recorder Rhonda A Olson

BY _____ Deputy

DOCUMENT NO. _____

STATEMENT OF EVIDENCE

THE ORIGINAL CORNER WAS SET BY DEPUTY SURVEYOR ISAAC BANKER IN DECEMBER 1855. EVIDENCE FOR THE CORNER OR BEARING TREES NO LONGER REMAIN.

THERE ARE NO RECORDS AT THE COUNTY OF ANY SUBSEQUENT SURVEYS ALONG THIS LINE.

IN JANUARY 2006 E.G. RUD RAN A SURVEY AROUND SECTION 1 THRU 6 TO LOCATE EXISTING MONUMENTS AND LINES OF OCCUPATION.

THERE IS A FENCE CORNER VERY NEAR THE LOCATION OF THIS CORNER. TESTIMONY FROM BRAD RICHARDS STATED THAT THERE WAS AN OLD FENCE AT THIS LOCATION WITH A WOOD POST. THIS LOCATION WAS 1 FOOT WEST OF THE PRESENT CORNER FENCE POST. THIS POSITION FIT WITHIN 2' OF DOUBLING OVER THE DISTANCE ON THE NORTH LINE OF SECTION 4 AND WITHIN 3 FEET OF A STRAIGHT LINE DRAWN THRU THE NORTHEAST AND NORTHWEST CORNERS OF SECTION 4.

A KANABEC COUNTY MONUMENT WAS SET, TIES TAKEN AND KANABEC COUNTY COORDINATES ESTABLISHED ON THIS POSITION USING G.P.S. EQUIPMENT.