

# CERTIFICATE OF LOCATION OF GOVERNMENT CORNER

NORTHEAST Corner of Section 05, Township 41, Range 24, 4TH P.M.

STATE OF MINNESOTA, County of KANABEC

At the corner location shown on the sketch:  
IN JANUARY 2006 FOUND MONUMENT  
AND ESTABLISHED G.P.S. COORDINATES ON ITS LOCATION.

Kanabec County U.S. Survey Feet Coordinates  
NAD 1983, HARN 1996 Adjustment  
Obtained by RTK GPS Observation

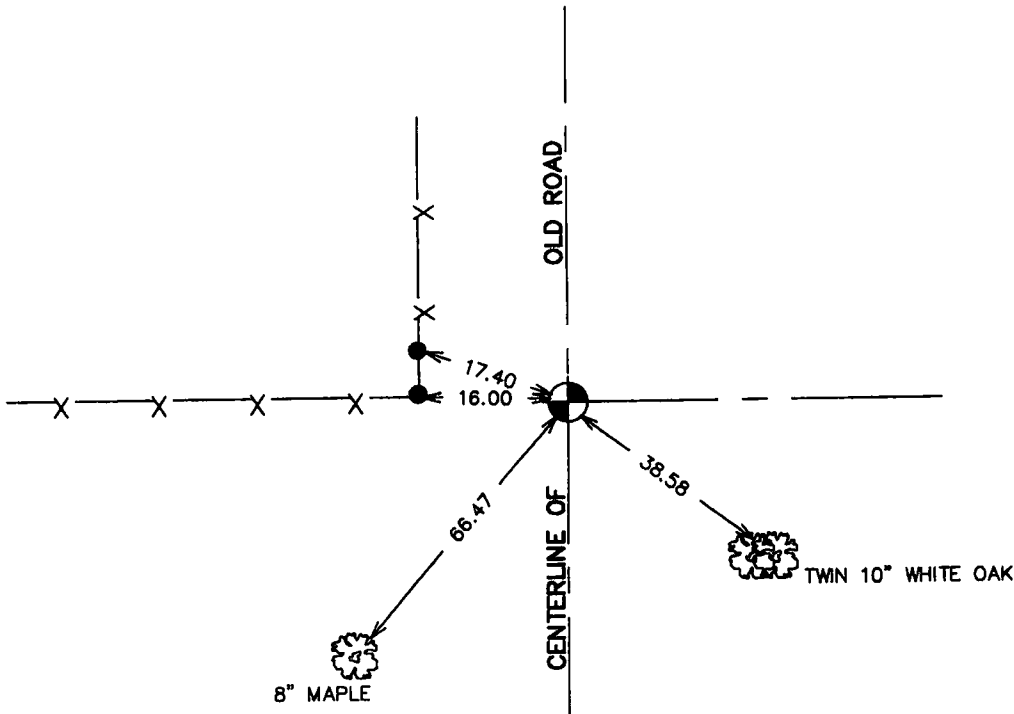
Northing= 224161.95

Easting= 375679.02

Note: NAD 1983, HARN 1996 Adjustment  
coordinates are NOT compatible with  
NAD 1983 coordinates

Note: 1 Meter=3937/1200 U.S. Survey Feet

## SKETCH OF REFERENCE TIES



NOTE: TIES ARE TO SPIKE IN NEAR FACE

Statement of evidence relative to this corner location is on back of page.

I hereby certify that this document and the data contained herein was prepared by me or under my direct supervision.

*Ernest J. Blue*  
Signature

July 15, 2006  
Date

Registration No. Minn No 9808

Land Surveyor,  Professional Engineer

County Surveyor,  County Engineer

## OFFICE OF THE COUNTY RECORDER

County of Kanabec

I hereby certify that this document was filed in the County Recorder's office at 8:00 A.M. on the

20<sup>th</sup> day of July A.D., 2006

County Recorder Rhonda A Olson

BY \_\_\_\_\_ Deputy

DOCUMENT NO. \_\_\_\_\_

NE CORNER SECTION 5, T41, R23

**STATEMENT OF EVIDENCE**

THE ORIGINAL CORNER WAS SET BY DEPUTY SURVEYOR ISAAC BANKER IN DECEMBER 1855. EVIDENCE FOR THE CORNER OR BEARING TREES NO LONGER REMAIN.

IN 1988 GREGORY BRICK RLS #16055 RAN A SURVEY ALONG THIS LINE AND FOUND AN OLD STONE WITH AN X CHISELED ON IT. THIS HAD BEEN REMOVED TO INSTALL FENCE BUT THE POSITION WAS RESET BASED ON TESTIMONY OF FORMER S. WOODS. A 1/2" IRON PIPE WAS SET IN ITS PLACE BY GREG BRICK AND TIES ESTABLISHED.

IN JANUARY 2006 E.G. RUD FOUND THIS 1/2" IRON PIPE AND RESET A KANABEC COUNTY MONUMENT AND ESTABLISHED KANABEC COUNTY COORDINATES ON THIS POSITION USING G.P.S. EQUIPMENT.