

CERTIFICATE OF LOCATION OF GOVERNMENT CORNER

NORTH QUARTER Corner of Section 04, Township 41, Range 24, 4TH P.M.

STATE OF MINNESOTA, County of KANABEC

At the corner location shown on the sketch:

IN 2006 SET KANABEC COUNTY MONUMENT AND ESTABLISHED G.P.S. COORDINATES ON ITS LOCATION.

Kanabec County U.S. Survey Feet Coordinates
NAD 1983, HARN 1996 Adjustment
Obtained by RTK GPS Observation

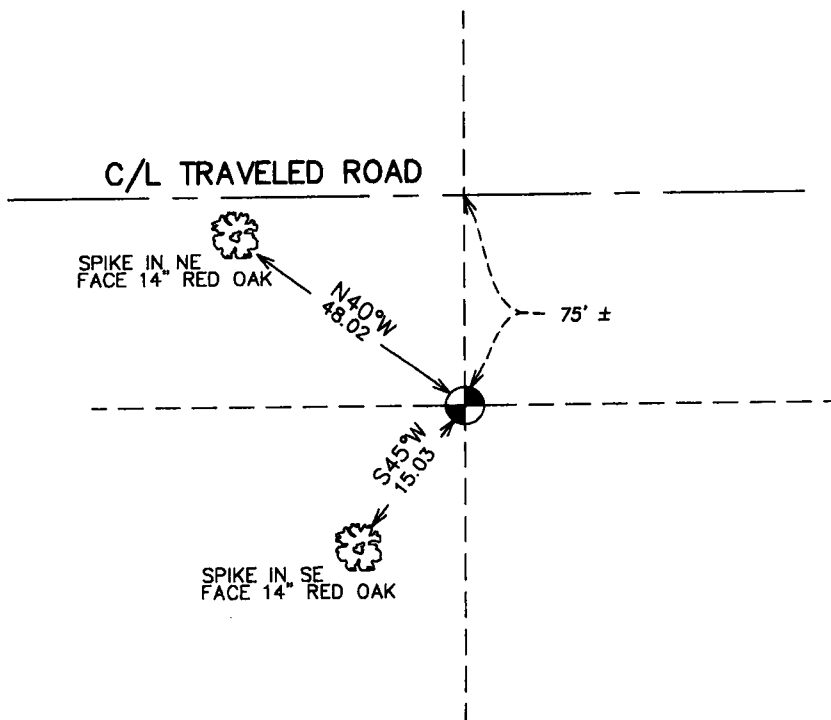
Northing= 224280.71

Easting= 378301.65

Note: NAD 1983, HARN 1996 Adjustment coordinates are NOT compatible with NAD 1983 coordinates

Note: 1 Meter=3937/1200 U.S. Survey Feet

SKETCH OF REFERENCE TIES



NOTE: TIES ARE TO SPIKE IN NEAR FACE

Statement of evidence relative to this corner location is on back of page.

I hereby certify that this document and the data contained herein was prepared by me or under my direct supervision.

Ernst Lund Signature July 13, 2006 Date

Registration No. Minn No 9808

Land Surveyor, Professional Engineer

County Surveyor, County Engineer

OFFICE OF THE COUNTY RECORDER

County of Kanabec

I hereby certify that this document was filed in the County Recorder's office at 8:00 A.M. on the

20th day of July A.D., 2006

County Recorder Rhonda A Olson

BY _____ Deputy

DOCUMENT NO. _____

N 1/4 CORNER SECTION 4, T41, R24

STATEMENT OF EVIDENCE

THE ORIGINAL CORNER WAS SET BY DEPUTY SURVEYOR ISAAC BANKER IN DECEMBER 1855. EVIDENCE FOR THE CORNER OR BEARING TREES NO LONGER REMAIN.

IN 1988 GREGORY BRICK RLS #16055 RAN A SURVEY ALONG THE NORTH LINE OF SECTION 4 AND SET A 1/2" IRON PIPE ON LINE AND AT A PROPORTIONATE DISTANCE BETWEEN THE NORTHEAST CORNER AND NORTHWEST CORNER OF SECTION 4.

IN 2006 E.G. RUD FOUND THIS 1/2" IRON PIPE, TOOK NEW TIES, SET A KANABEC COUNTY MONUMENT AND ESTABLISHED KANABEC COUNTY COORDINATES ON THIS POSITION USING G.P.S. EQUIPMENT.