

CERTIFICATE OF LOCATION OF GOVERNMENT CORNER

NORTHEAST Corner of Section 04, Township 41, Range 24, 4TH P.M.

STATE OF MINNESOTA, County of KANABEC

At the corner location shown on the sketch:

IN 2006 FOUND THIS CORNER AND ESTABLISHED KANABEC COUNTY COORDINATES ON ITS LOCATION.

Kanabec County U.S. Survey Feet Coordinates
NAD 1983, HARN 1996 Adjustment
Obtained by RTK GPS Observation

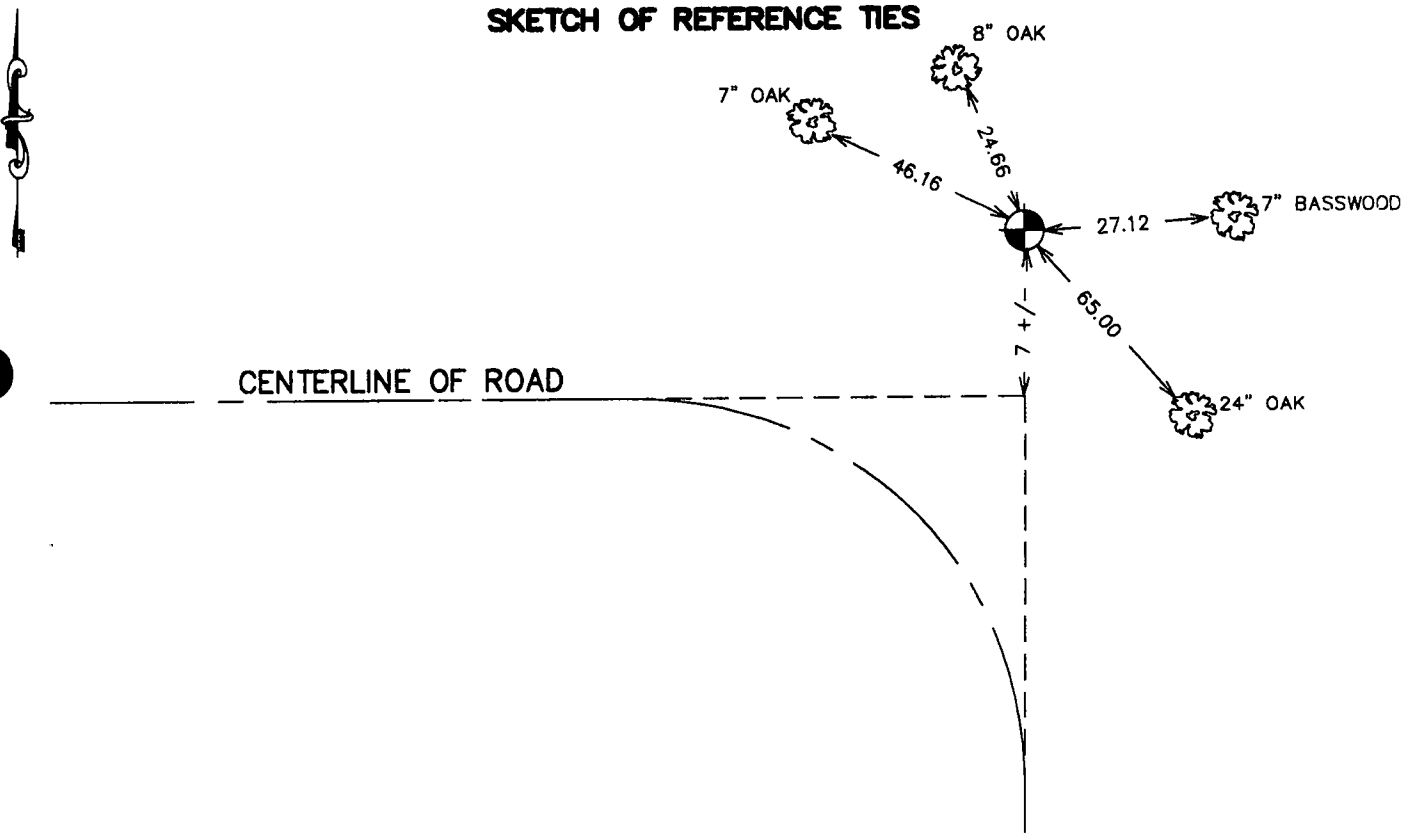
Northing= 224399.91

Easting= 380924.295

Note: NAD 1983, HARN 1996 Adjustment coordinates are NOT compatible with NAD 1983 coordinates

Note: 1 Meter=3937/1200 U.S. Survey Feet

SKETCH OF REFERENCE TIES



NOTE: TIES ARE TO SPIKE IN NEAR FACE

Statement of evidence relative to this corner location is on back of page.

I hereby certify that this document and the data contained herein was prepared by me or under my direct supervision.

Ernest J. Reed
Signature

July 15, 2006
Date

Registration No. Minn No. 9808

Land Surveyor, Professional Engineer

County Surveyor, County Engineer

OFFICE OF THE COUNTY RECORDER

County of Kanabec

I hereby certify that this document was filed in the County Recorder's office at 8:00 A.M. on the

20th day of July A.D., 2006

County Recorder Rhonda Olson

BY Deputy

DOCUMENT NO.

STATEMENT OF EVIDENCE

ON NOVEMBER 28TH, 2000 M.B. RUDE SEARCHED THE AREA FOR EVIDENCE OF THIS CORNER.

ALL OF THE ORIGINAL BEARING TREES ARE NOW GONE.

IN DEC. OF 1988 GREGORY BRICK LAND SURVEYOR NO. 16058 MADE A SURVEY IN SECTION 4 AND FOUND A 2 INCH IRON PIPE AT THIS CORNER.

M.B. RUDE FOUND A 1 1/2" INSIDE DIAMETER PIPE AT THIS CORNER AND MEASURED WEST TO A POINT SET IN THE SURVEY MADE BY GREGORY BRICK TO VERIFY ITS LOCATION.

M.B. RUDE ACCEPTED THE FOUND IRON PIPE AS THE PERPETUATED CORNER LOCATION.

IN JANUARY 2006 E.G. RUD FOUND THIS MONUMENT, PLACED AN ALUMINUM CAP ON TOP OF THE PIPE AND ESTABLISHED KANABEC COUNTY COORDINATES ON THIS POSITION.