

# CERTIFICATE OF LOCATION OF GOVERNMENT CORNER

NORTHEAST Corner of Section 03, Township 41, Range 24, 4TH P.M.

STATE OF MINNESOTA, County of KANABEC

At the corner location shown on the sketch:

IN 2006 FOUND THIS CORNER  
AND ESTABLISHED KANABEC COUNTY COORDINATES ON ITS LOCATION.

Kanabec County U.S. Survey Feet Coordinates  
NAD 1983, HARN 1996 Adjustment  
Obtained by RTK GPS Observation

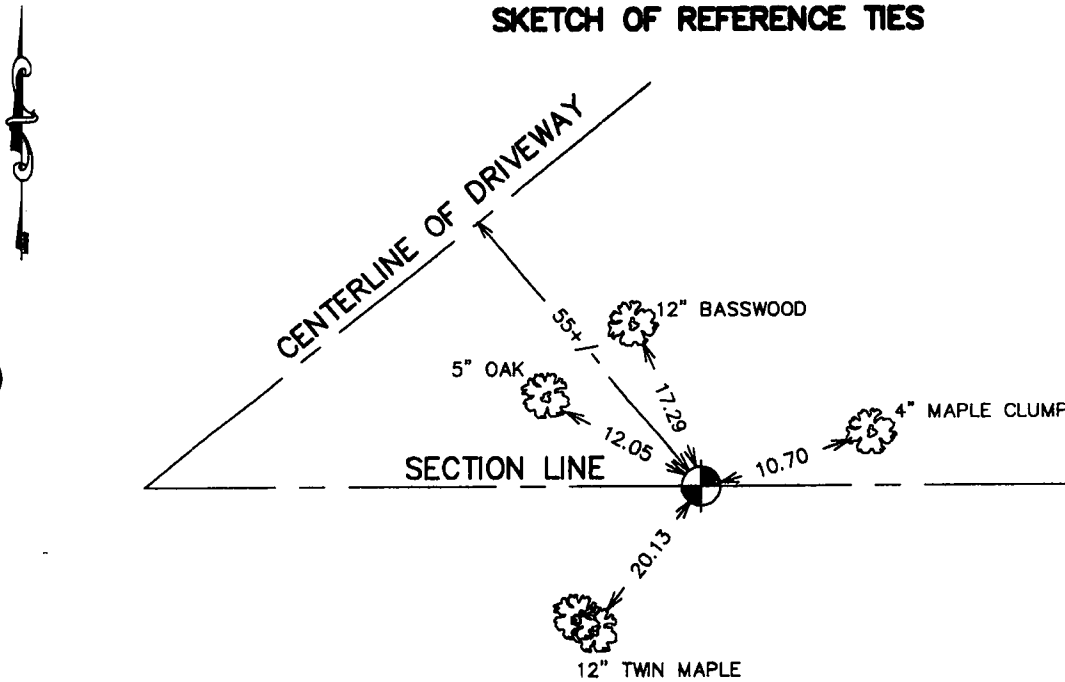
Northing= 224622.96

Easting= 386248.49

Note: NAD 1983, HARN 1996 Adjustment  
coordinates are NOT compatible with  
NAD 1983 coordinates

Note: 1 Meter=3937/1200 U.S. Survey Feet

### SKETCH OF REFERENCE TIES



NOTE: TIES ARE TO SPIKE IN NEAR FACE

Statement of evidence relative to this corner location is on back of page.

I hereby certify that this document and the data contained herein was prepared by me or under my direct supervision.

Ernest J. Rud  
Signature

July 15, 2006  
Date

Registration No. Minnesota No 9808

Land Surveyor,  Professional Engineer

County Surveyor,  County Engineer

### OFFICE OF THE COUNTY RECORDER

County of Kanabec

I hereby certify that this document was filed in the County Recorder's office at 8:00 A.M. on the

20<sup>th</sup> day of July A.D., 2006

County Recorder Rhonda Olson

BY \_\_\_\_\_ Deputy

DOCUMENT NO. \_\_\_\_\_

**STATEMENT OF EVIDENCE**

ON NOVEMBER 28TH, 2000 M.B. RUDE SEARCHED THE AREA FOR EVIDENCE OF THIS CORNER.

ALL OF THE ORIGINAL BEARING TREES ARE NOW GONE.

THERE ARE NO RESURVEY RECORDS ON FILE FOR THIS CORNER.

M.B. RUDE SET THIS CORNER ON LINE AND PROPORTION MEASUREMENT BETWEEN THE N1/4 CORNER OF SECTION 2 AND NW CORNER OF SECTION 3.

IN 2006 E.G. RUD FOUND THIS MONUMENT, VERIFIED THE TIES AND ESTABLISHED KANABEC COUNTY COORDINATES ON THIS POSITION.