

CERTIFICATE OF LOCATION OF GOVERNMENT CORNER

NORTH QUARTER Corner of Section 02, Township 41, Range 24, 4TH P.M.

STATE OF MINNESOTA, County of KANABEC

At the corner location shown on the sketch:
IN JANUARY 2006 FOUND MONUMENT
AND ESTABLISHED G.P.S. COORDINATES ON ITS LOCATION.

Kanabec County U.S. Survey Feet Coordinates
NAD 1983, HARN 1996 Adjustment
Obtained by RTK GPS Observation

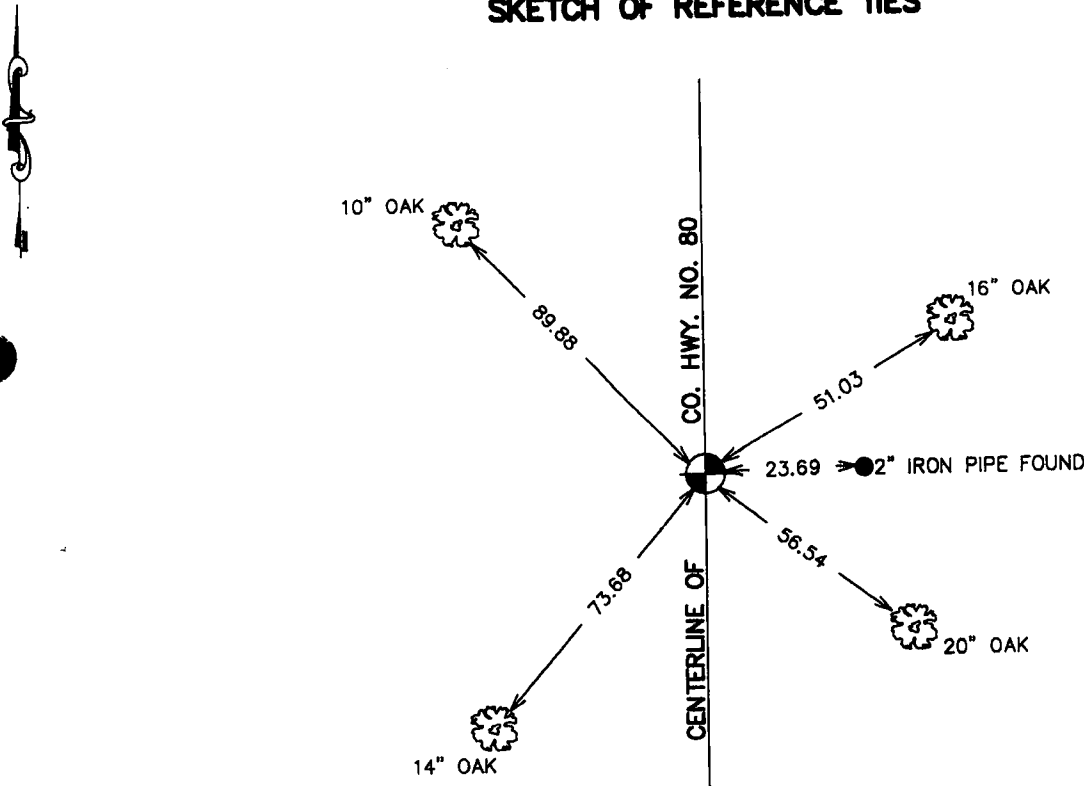
Northing= 224734.49

Easting= 388910.59

Note: NAD 1983, HARN 1996 Adjustment
coordinates are NOT compatible with
NAD 1983 coordinates

Note: 1 Meter=3937/1200 U.S. Survey Feet

SKETCH OF REFERENCE TIES



NOTE: TIES ARE TO SPIKE IN NEAR FACE

Statement of evidence relative to this corner location is on back of page.

I hereby certify that this document and the data contained herein was prepared by me or under my direct supervision.

Ernest Reed Signature July 15, 2006 Date

Registration No. Minn No 9808

Land Surveyor, Professional Engineer

County Surveyor, County Engineer

OFFICE OF THE COUNTY RECORDER

County of Kanabec

I hereby certify that this document was filed in the County Recorder's office at 8:00 A.M. on the

20th day of July A.D., 2006

County Recorder Rhonda Olson

BY _____ Deputy

DOCUMENT NO. _____

N 1/4 CORNER SECTION 2, T42, R24

STATEMENT OF EVIDENCE

ALL OF THE ORIGINAL BEARING TREES ARE NOW GONE.

THERE IS A TOWNSHIP ROAD SURVEY BY JOHN NELSON THE COUNTY SURVEYOR, DATED IN 1901, ON FILE, FOR A TOWNSHIP ROAD ALONG THE NORTH-SOUTH QUARTER LINE OF SECTION 2.

THERE IS AN EXISTING NORTH-SOUTH ROAD ALONG THE NORTH-SOUTH QUARTER LINE OF SECTION 2 AND A TREE OCCUPATION LINE WEST OF THE CORNER AND A 2" IRON PIPE ON THE EAST SIDE OF THE ROAD.

IN 2000 M.B. RUDE ACCEPTED THE CENTER OF THE NORTH-SOUTH ROAD PER JOHN NELSON'S SURVEY AND TREE LINE WEST AND THE 2" IRON PIPE EAST AS THE BEST AVAILABLE EVIDENCE OF THE ORIGINAL CORNER LOCATION.

IN JANUARY 2006 E.G. RUD FOUND THIS MONUMENT, VERIFIED TIES AND ESTABLISHED KANABEC COUNTY COORDINATES ON THIS POSITION USING G.P.S. EQUIPMENT.