

CERTIFICATE OF LOCATION OF GOVERNMENT CORNER

NORTH QUARTER Corner of Section 1, Township 41, Range 24, 4TH P.M.

STATE OF MINNESOTA, County of KANABEC

At the corner location shown on the sketch:
ON 12/8/2011 SET A 1/2" IRON PIPE 3' LONG WITH AN ALUMINUM CAP, STICKING UP 1.5 FEET.

Kanabec County U.S. Survey Feet Coordinates
NAD 1983, HARN 1996 Adjustment
Obtained by RTK GPS Observation

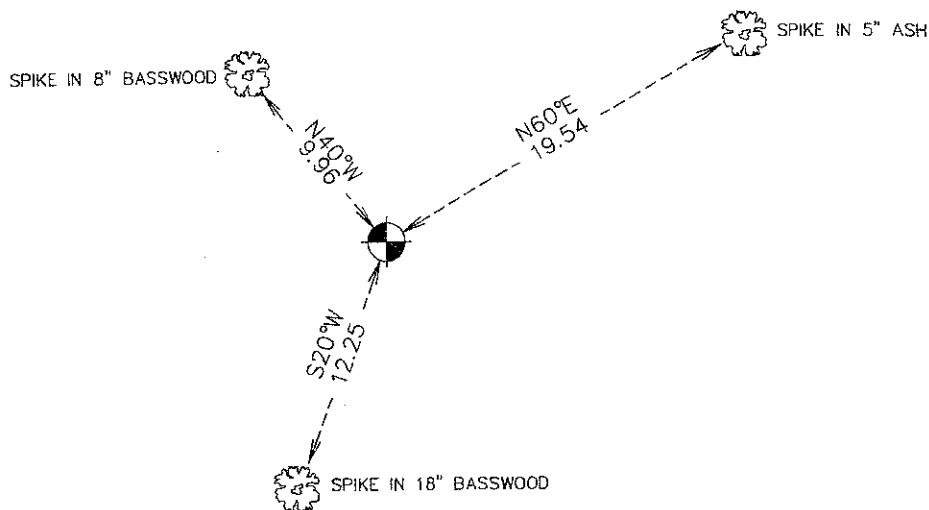
Northing= 224927.57

Easting= 394215.40

Note: NAD 1983, HARN 1996 Adjustment coordinates are NOT compatible with NAD 1983 coordinates

Note: 1 Meter=3937/1200 U.S. Survey Feet

SKETCH OF REFERENCE TIES



Statement of evidence relative to this corner location is on back of page.

I hereby certify that this document and the data contained herein was prepared by me or under my direct supervision.

Ernest G. Rud
Signature

12-21-2011
Date

Registration No. 9808

Land Surveyor, Professional Engineer

County Surveyor, County Engineer

OFFICE OF THE COUNTY RECORDER

County of _____

I hereby certify that this document was filed in the County Recorder's office at _____ M. on the

_____ day of _____ A.D., 20____

County Recorder _____

BY _____ Deputy

DOCUMENT NO. _____

N1/4 CORNER, SEC. 1, T41, R24
S1/4 CORNER, SEC. 35, T42, R24

STATEMENT OF EVIDENCE

THE ORIGINAL CORNER WAS ON NOVEMBER 6, 1849 AND 2 BEARING TREES NOTED AS:
12" ELM @ 18 LINKS BEARING N87°W
5" IRONWOOD @ 19 LINKS BEARING S40°E

NO VISIBLE EVIDENCE COULD BE FOUND FOR THE ORIGINAL CORNER OR BEARING TREES.

NO RECORDS OF ANY SUBSEQUENT SURVEYS COULD BE FOUND AT THE KANABEC COUNTY OFFICES.

IN DECEMBER 2011 E.G. RUD AND SONS SURVEYED AROUND SECS. 1, 2, 11, AND 12. THIS CORNER FALLS IN A HEAVILY WOODED AREA 300± FEET WEST OF A SWAMPY AREA.

THEREFORE, A 1/2" BY 42" IRON PIPE WITH AN ALUMINUM CAP WAS SET BY SINGLE PROPORTION BETWEEN THE NE CORNER OF SEC. 1 AND THE N1/4 CORNER OF SEC. 2. TIES WERE TAKEN AND KANABEC COUNTY COORDINATES WERE ESTABLISHED ON THIS POSITION.