

# CERTIFICATE OF LOCATION OF GOVERNMENT CORNER

EAST QUARTER Corner of Section 1, Township 41, Range 24, 4TH P.M.

STATE OF MINNESOTA, County of KANABEC

At the corner location shown on the sketch:  
ON 12/8/2011 FOUND A CAST IRON MONUMENT.

Kanabec County U.S. Survey Feet Coordinates  
NAD 1983, HARN 1996 Adjustment  
Obtained by RTK GPS Observation

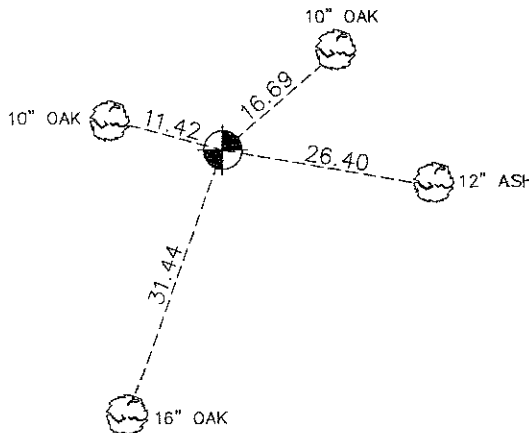
Northing= 221080.55

Easting= 396803.98

Note: NAD 1983, HARN 1996 Adjustment  
coordinates are NOT compatible with  
NAD 1983 coordinates

Note: 1 Meter=3937/1200 U.S. Survey Feet

### SKETCH OF REFERENCE TIES (FROM TIE SHEET 674)



TIES ARE TO SPIKE IN  
BLAZE IN NEAR FACE

Statement of evidence relative to this corner location is on back of page.

I hereby certify that this document and the data contained herein was prepared by me or under my direct supervision.

Erest Gud 11-19-12  
Signature Date

Registration No. 9808

- Land Surveyor,       Professional Engineer  
 County Surveyor,     County Engineer

### OFFICE OF THE COUNTY RECORDER

County of \_\_\_\_\_

I hereby certify that this document was filed in the County Recorder's office at \_\_\_\_\_ M. on the

\_\_\_\_\_ day of \_\_\_\_\_ A.D., 20\_\_

County Recorder \_\_\_\_\_

BY \_\_\_\_\_ Deputy

**DOCUMENT NO.** \_\_\_\_\_

E1/4 CORNER, SEC. 1, T41, R24

**STATEMENT OF EVIDENCE**

**ALL OF THE ORIGINAL BEARING TREES ARE NOW GONE.**

**THERE IS NO RESURVEY DATA ON FILE FOR THIS CORNER.**

**THERE ARE NO DEFINITE LINES OF OCCUPATION IN THIS AREA.**

**ON FEBRUARY 2, 1983, M.B. RUDE SET THIS CORNER BY SINGLE PROPORTIONAL MEASUREMENT BETWEEN THE E1/4 CORNER OF SEC. 12 AND THE NE CORNER OF SEC. 1.**

**THERE IS AN EXISTING FENCE CORNER 100± FEET EAST AND 10± FEET NORTH OF THIS CORNER.**

**ON DECEMBER 8, 2011, E.G. RUD AND SONS LOCATED THIS MONUMENT AND KANABEC COUNTY COORDINATES WERE ESTABLISHED ON THIS POSITION.**