

CERTIFICATE OF LOCATION OF GOVERNMENT CORNER

NORTHEAST 24 41 24
 NORTHWEST Corner of Section 19, Township 41, Range 23, 4TH P.M.

STATE OF MINNESOTA, County of KANABEC

CORNER FALLS IN POND

Kanabec County U.S. Survey Feet Coordinates
 NAD 1983, HARN 1996 Adjustment
 Obtained by RTK GPS Observation

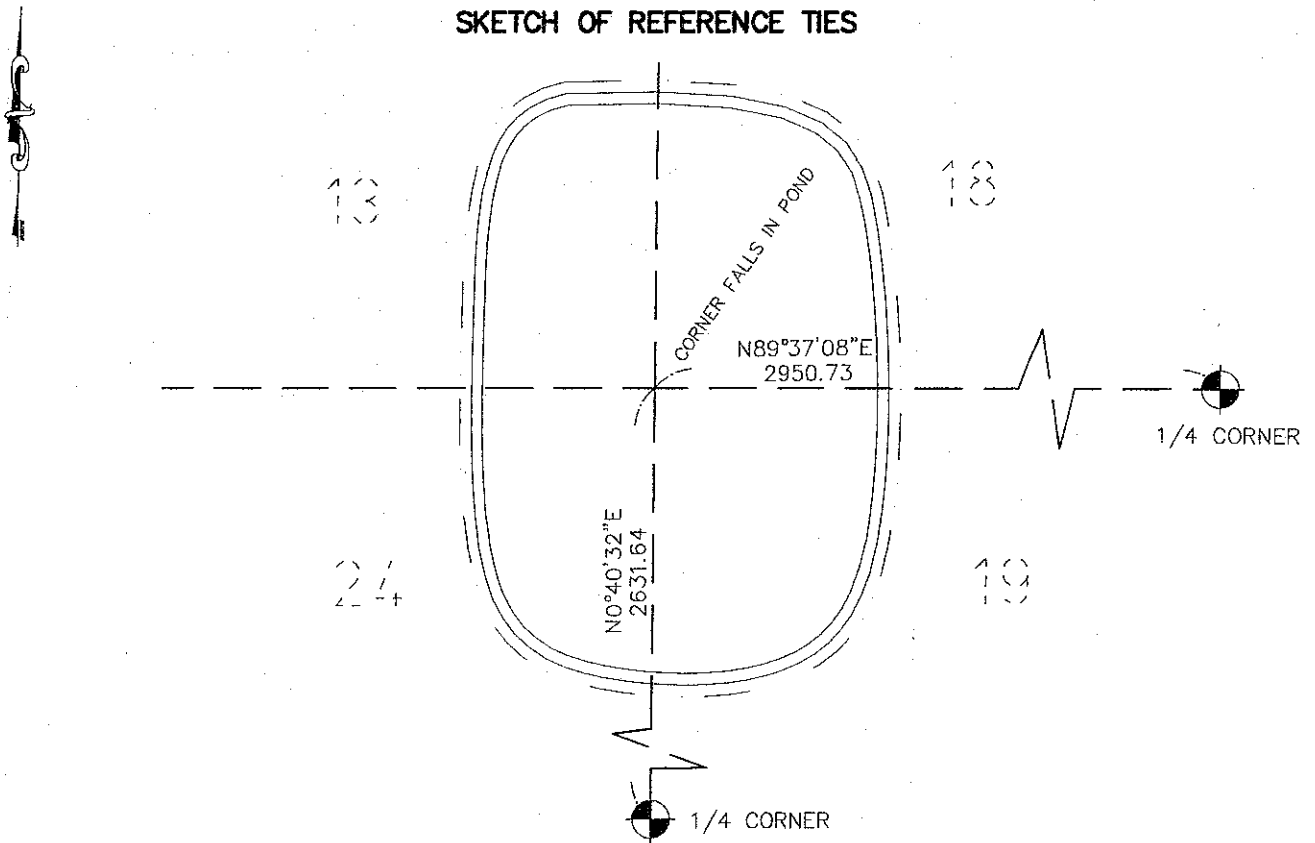
Northing= 207842.63

Easting= 396702.34

Note: NAD 1983, HARN 1996 Adjustment
 coordinates are NOT compatible with
 NAD 1983 coordinates

Note: 1 Meter=3937/1200 U.S. Survey Feet

SKETCH OF REFERENCE TIES



Statement of evidence relative to this corner location is on back of page.

I hereby certify that this document and the data contained herein was prepared by me or under my direct supervision.

Ernest Blud
 Signature

4-29-2009
 Date

Registration No. 9808

- Land Surveyor, Professional Engineer
 County Surveyor, County Engineer

OFFICE OF THE COUNTY RECORDER

County of _____

I hereby certify that this document was filed in the County Recorder's office at _____ M. on the _____ day of _____ A.D., 20____

County Recorder _____

BY _____ Deputy

DOCUMENT NO. _____

S1/4 CORNER SECTION 22, TOWNSHIP 41, RANGE 24

STATEMENT OF EVIDENCE

THE ORIGINAL CORNER WAS SET BY DEPUTY SURVEYOR ISAAC BANKER ON OCTOBER 4TH 1849 IN A TAMARACK SWAMP.

NO RECORDS OF ANY SUBSEQUENT SURVEYS COULD BE FOUND AT THE KANABEC COUNTY COURT HOUSE.

TODAY THIS CORNER FALLS IN A POND SO ANY PHYSICAL EVIDENCE IS NOT PRACTICAL TO FIND.

IN 1981 M.B. RUDE SET A THEORETICAL LOCATION ON THIS CORNER TO SET THE NORTH QUARTER OF SEC. 24, T.41, R.24.

IN MARCH, 2009 E.G. RUD AND SONS RAN A SURVEY AROUND SECTION 19, T.41, R.23 AND SECTION 24, T.41, R.24 TO LOCATE EXISTING MONUMENTATION AND LINES OF OCCUPATION. THE LINES OF OCCUPATION AND GOVERNMENT MEASUREMENT TO EDGE OF SWAMP AGREE VERY FAVORABLY WITH M.B. RUDE'S THEORETICAL LOCATION. THEREFORE THIS LOCATION WAS ACCEPTED AS THE BEST EVIDENCE TO USE AS THE CORNER.

KANABEC COUNTY COORDINATES WERE COMPUTED ON THIS LOCATION AND TIED INTO EXISTING GOVERNMENT CORNERS.