

CERTIFICATE OF LOCATION OF GOVERNMENT CORNER

WEST QUARTER 19 41 23
 EAST QUARTER Corner of Section 24, Township 41, Range 24, 4TH P.M.

STATE OF MINNESOTA, County of KANABEC

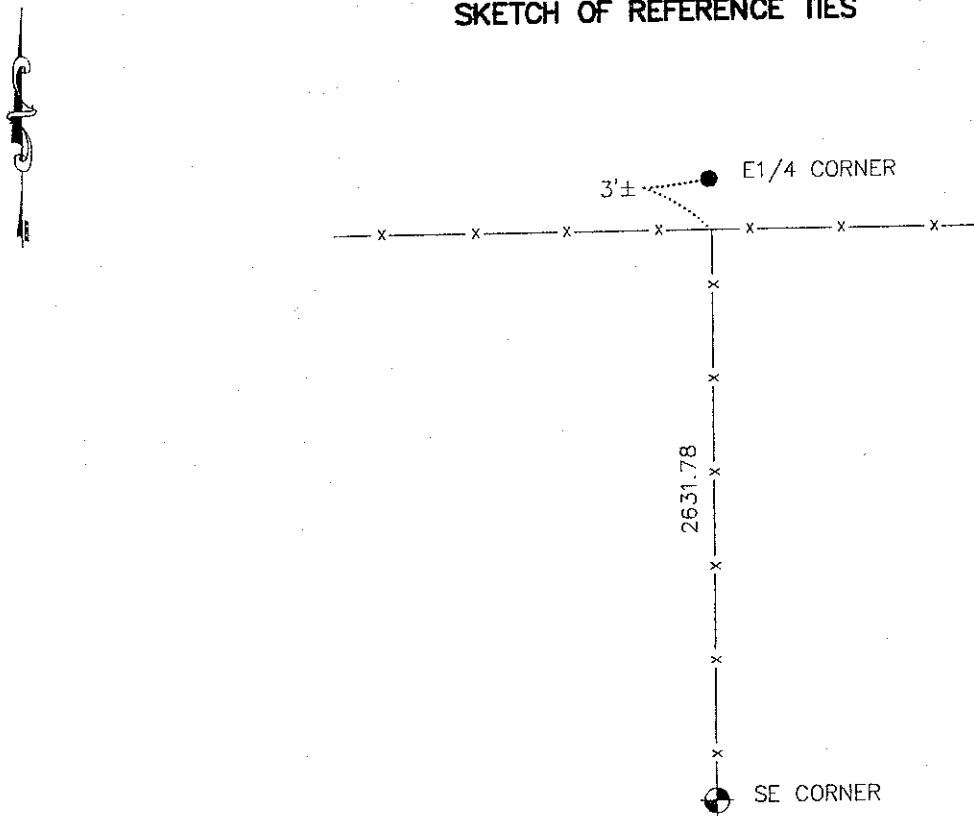
A IRON BAR 1 FOOT NORTH OF OLD WOOD POST AND 3 FEET NORTH OF FENCE LINE.

Kanabec County U.S. Survey Feet Coordinates
 NAD 1983, HARN 1996 Adjustment
 Obtained by RTK GPS Observation

Northing= 205211.17
 Easting= 396671.31

Note: NAD 1983, HARN 1996 Adjustment coordinates are NOT compatible with NAD 1983 coordinates
 Note: 1 Meter=3937/1200 U.S. Survey Feet

SKETCH OF REFERENCE TIES



Statement of evidence relative to this corner location is on back of page.

I hereby certify that this document and the data contained herein was prepared by me or under my direct supervision.

Ernest L. Rud 4-29-2009
Signature Date

Registration No. 9808

- Land Surveyor, Professional Engineer
 County Surveyor, County Engineer

OFFICE OF THE COUNTY RECORDER

County of _____

I hereby certify that this document was filed in the County Recorder's office at _____ M. on the _____ day of _____ A.D., 20____

County Recorder _____
 BY _____ Deputy

DOCUMENT NO. _____

W1/4 CORNER SECTION 19, TOWNSHIP 41, RANGE 23
E1/4 CORNER SECTION 24, TOWNSHIP 41, RANGE 24

STATEMENT OF EVIDENCE

ALL OF THE ORIGINAL BEARING TREES ARE NOW GONE.

THERE ISN'T ANY RESURVEY INFORMATION ON FILE FOR THIS CORNER.

THE AREA RESIDENTS HAVE NO KNOWLEDGE OF THE CORNER MARKER.

IN FEBRUARY, 1979, M.B. RUDE RAN A SURVEY AROUND SECTIONS 10 THROUGH 15, 22 THROUGH 24, TOWNSHIP 41, RANGE 24, AND SECTIONS 7, 18 AND 19, TOWNSHIP 41, RANGE 23, AND LOCATED THE EXISTING LINES OF OCCUPATION AND MONUMENTATION.

IN MARCH, 1981, M.B. RUDE FOUND AN IRON BAR ON THE NORTH SIDE OF A FENCE CORNER WHICH HAS BEEN ACCEPTED AS THE CORNER LOCATION BY THE AREA RESIDENTS AND IS IN HARMONY WITH THE GOVERNMENT SURVEY AND THE OCCUPATION LINES IN SECTION 24.

THERE ARE NO TIE POINTS AVAILABLE.

IN MARCH 2009 E.G. RUD AND SONS RELOCATED THIS CORNER AND ESTABLISHED KANABEC COUNTY COORDINATES USING G.P.S. EQUIPMENT.