

CERTIFICATE OF LOCATION OF GOVERNMENT CORNER

NORTHEAST Corner of Section 36, Township 41, Range 24, 4TH P.M.

STATE OF MINNESOTA, County of KANABEC

CAST IRON MONUMENT PER CERT. NO. 231

Kanabec County U.S. Survey Feet Coordinates
NAD 1983, HARN 1996 Adjustment
Obtained by RTK GPS Observation

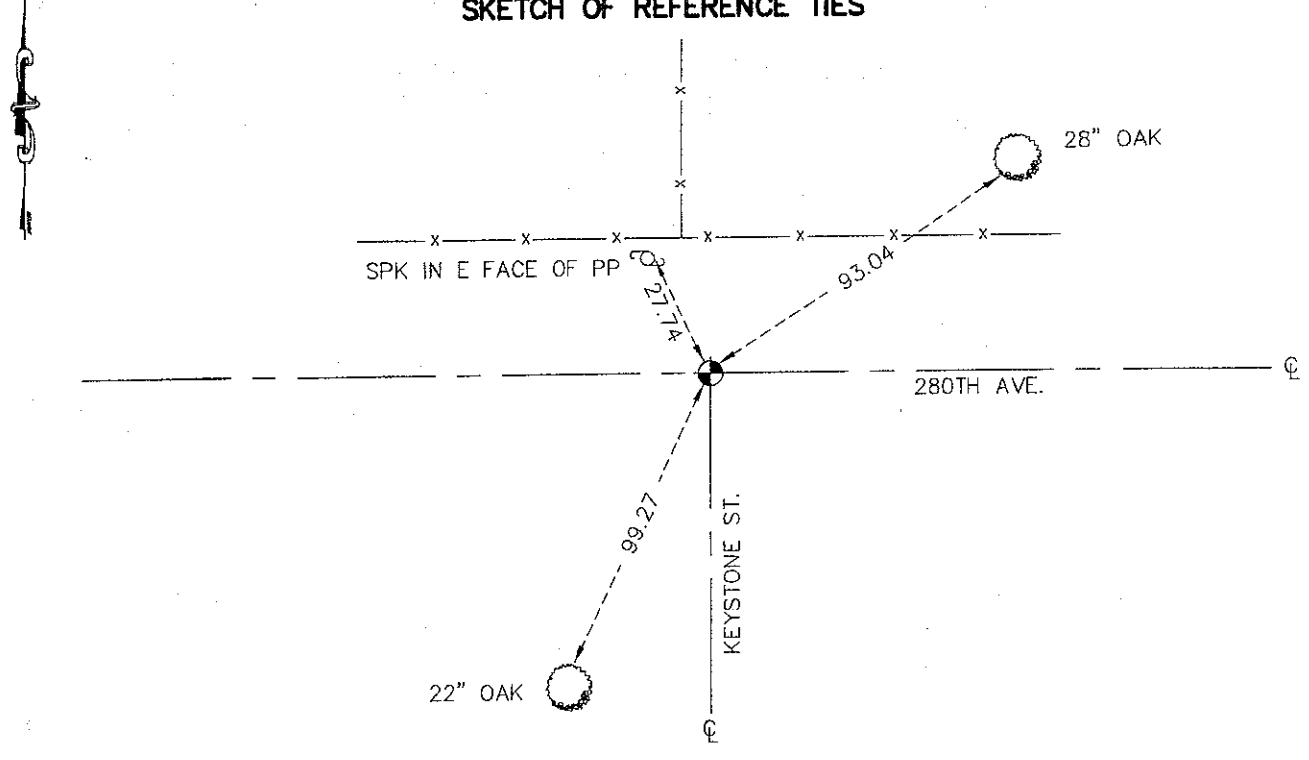
Northing= 197286.97

Easting= 396601.90

Note: NAD 1983, HARN 1996 Adjustment
coordinates are NOT compatible with
NAD 1983 coordinates

Note: 1 Meter=3937/1200 U.S. Survey Feet

SKETCH OF REFERENCE TIES



TIES ARE TO SPK IN BLAZE IN NEAR FACE

Statement of evidence relative to this corner location is on back of page.

I hereby certify that this document and the data contained herein was prepared by me or under my direct supervision.

Ernest Blund 3-17-2009
Signature Date

Registration No. 9808

Land Surveyor, Professional Engineer

County Surveyor, County Engineer

OFFICE OF THE COUNTY RECORDER

County of _____

I hereby certify that this document was filed in the County Recorder's office at _____ M. on the _____ day of _____ A.D., 20____

County Recorder _____

BY _____ Deputy

DOCUMENT NO. _____

NE CORNER SECTION 36, TOWNSHIP 41, RANGE 24

STATEMENT OF EVIDENCE

THE ORIGINAL CORNER WAS SET ON OCT. 14, 1849 BY DEPUTY SURVEYOR ISAAC BANKER AND 4 ASPEN TREES WERE NOTED AS BEARING TREES. NO VISIBLE EVIDENCE REMAINS TODAY FOR THE ORIGINAL CORNER OR BEARING TREES.

ON JUNE 16, 1970, NORM C. HOIUM SET A CAST IRON MONUMENT AT THE INTERSECTION OF AN EAST - WEST GRAVEL ROAD WITH A TOWN ROAD TO THE SOUTH AND A FENCE LINE TO THE NORTH. THIS REPLACED A 1/2" X 30" IRON PIPE SET IN 1966 AS STATED ON CERTIFICATE OF LOCATION FILED ON PAGE 231 OF CORNER LOCATION. THIS CORNER WAS VERIFIED AND RETIED ON DEC. 8, 1988 BY M.B. RUDE.

IN MARCH 2009 E.G. RUD AND SONS FOUND THIS MONUMENT AND ESTABLISHED KANABEC COUNTY COORDINATES ON THIS POSITION USING G.P.S. EQUIPMENT.