

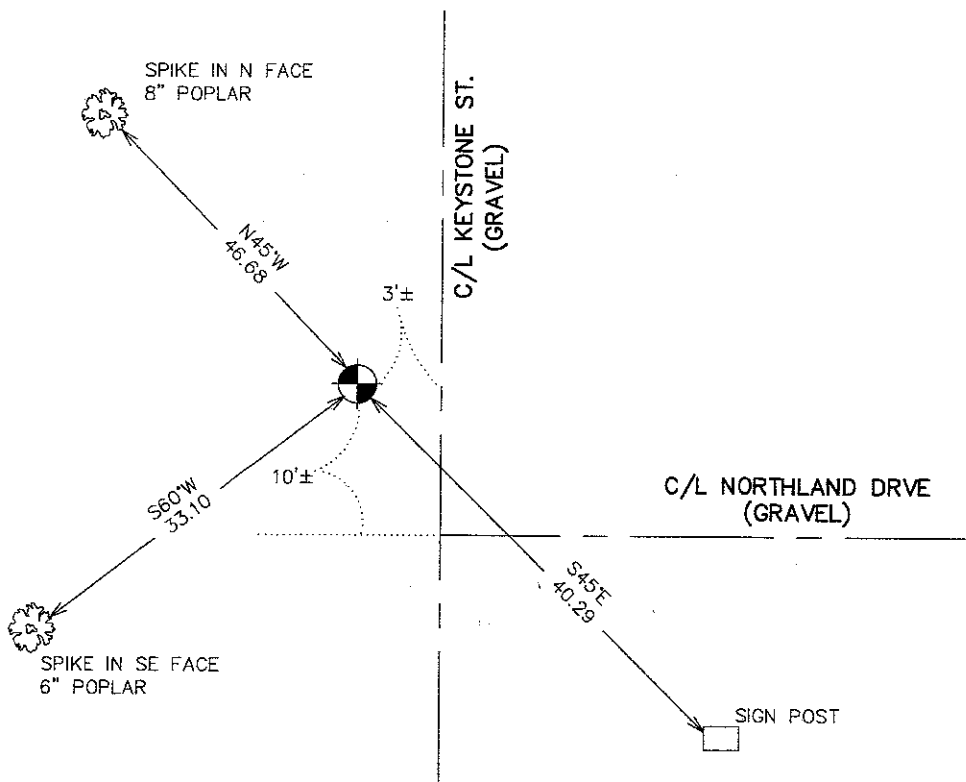
CERTIFICATE OF LOCATION OF GOVERNMENT CORNER

EAST QUARTER Corner of Section 36, Township 41, Range 24, 4TH P.M.

STATE OF MINNESOTA, County of KANABEC

<p>At the corner location shown on the sketch: SET #7 REBAR WITH AN ALUMINUM CAP AND ESTABLISHED KANABEC COUNTY COORDINATES ON ITS LOCATION.</p>	<p>Kanabec County U.S. Survey Feet Coordinates NAD 1983, HARN 1996 Adjustment Obtained by RTK-GPS Observation</p> <p>Northing= <u>194661.94</u> Easting= <u>396547.94</u></p> <p>Note: NAD 1983, HARN 1996 Adjustment coordinates are NOT compatible with NAD 1983 coordinates</p> <p>Note: 1 Meter=3937/1200 U.S. Survey Feet</p>
--	---

SKETCH OF REFERENCE TIES



Statement of evidence relative to this corner location is on back of page.

I hereby certify that this document and the data contained herein was prepared by me or under my direct supervision.

Ernest Blud 8-20-07
Signature Date

Registration No. Miss No 9808

Land Surveyor, Professional Engineer
 County Surveyor, County Engineer

OFFICE OF THE COUNTY RECORDER

County of _____

I hereby certify that this document was filed in the County Recorder's office at _____ M. on the _____ day of _____ A.D., 20____

County Recorder _____
 BY _____ Deputy

DOCUMENT NO. _____

EAST QUARTER CORNER SECTION 36, T41, R24

STATEMENT OF EVIDENCE

THIS CORNER WAS LOCATED BY CHARLES HANDSCHU IN 1927 IN A SURVEY FOR THE KNIFE LAKE DAM.

THIS SAME LOCATION WAS USED BY NEUBERT SWANSON, A LAND SURVEYOR, WHEN HE MADE THE PLAT OF SANDY KNOLL ADDITION IN 1959.

M.B. RUDE FOUND A 3/4" PIPE LYING DOWN AND RESET THE QUARTER CORNER BY EXTENSION WEST OF POINTS IN THE PLAT OF SANDY KNOLL ADDITION AND IRONS SET BY NEUBERT SWANSON AND GERALD SULLIVAN IN SURVEYS NORTH OF THE QUARTER LINE.

HE SET A 2 3/4" BY 17" CAST IRON MONUMENT 4" BELOW THE SURFACE.

IN MAY OF 2007 E.G. RUD AND SONS TRIED TO LOCATE THIS MONUMENT BUT COULD NOT FIND IT WITH A METAL LOCATOR. M.B. RUDE'S TIES WERE GONE SO THE CORNER WAS REPLACED USING M.B. RUDE'S SURVEY INFORMATION. A #7 REBAR WITH AN ALUMINUM CAP WAS SET, NEW TIES TAKEN AND KANABEC COUNTY COORDINATES ESTABLISHED USING G.P.S. EQUIPMENT.