

# CERTIFICATE OF LOCATION OF GOVERNMENT CORNER

SOUTH QUARTER Corner of Section 6, Township 42, Range 24, 4TH P.M.

STATE OF MINNESOTA, County of KANABEC

At the corner location shown on the sketch:  
On 06/ /2004 Found a Kanabec County Monument.

Kanabec County U.S. Survey Feet Coordinates  
NAD 1983, HARN 1996 Adjustment  
Obtained by RTK GPS Observation

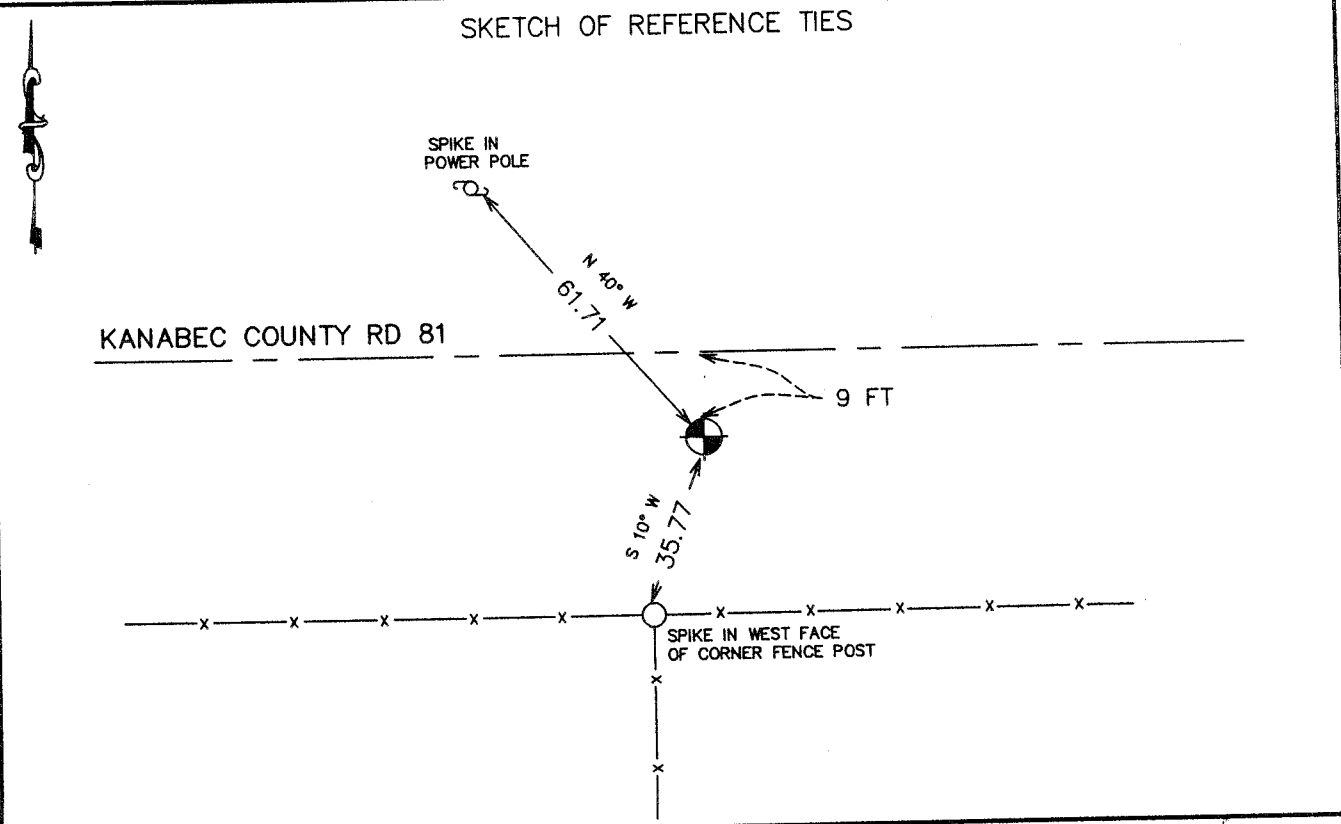
Northing= 250115.30

Easting= 368190.08

Note: NAD 1983, HARN 1996 Adjustment  
coordinates are NOT compatible with  
NAD 1983 coordinates

Note: 1 Meter=3937/1200 U.S. Survey Feet

## SKETCH OF REFERENCE TIES



Statement of evidence relative to this corner location is on back of page.

I hereby certify that this document and the data contained herein was prepared by me or under my direct supervision.

Ernest J. Rud 6-30-2004  
Signature Date

Registration No. 9808

Land Surveyor, [ ] Professional Engineer

[ ] County Surveyor, [ ] County Engineer

### OFFICE OF THE COUNTY RECORDER

County of \_\_\_\_\_

I hereby certify that this document was filed in the County Recorder's office at \_\_\_\_\_ M. on the \_\_\_\_\_ day of \_\_\_\_\_ A.D., 20 \_\_\_\_\_

County Recorder \_\_\_\_\_

BY \_\_\_\_\_ Deputy

DOCUMENT NO. \_\_\_\_\_

## STATEMENT OF EVIDENCE

(2004)

Original corner was set by Deputy Surveyor Barber in December 1855. Evidence of original corner and bearing trees no longer remain.

Handschu did a survey of Sections 7 and 8 in 1933 and noted an iron at this corner.

In June 2004, we ran a survey around Section 6 and found a #3 rebar at this location. The distance to the Southwest corner of Section 6 was 3094.45 feet and Handschu had recorded 3095 in 1933. The distance to the Southeast corner of Section 6b was 2723.55 and Handschu had recorded 2724 feet in 1933.

We accepted this rod as the best evidence as to the location of the corner and established Kanabec County Coordinates on this position and took new ties.