

CERTIFICATE OF LOCATION OF GOVERNMENT CORNER

SOUTHEAST Corner of Section 6, Township 42, Range 24, 4TH P.M.

STATE OF MINNESOTA, County of KANABEC

At the corner location shown on the sketch:
On 06/10/2004 Found a Kanabec County Monument.

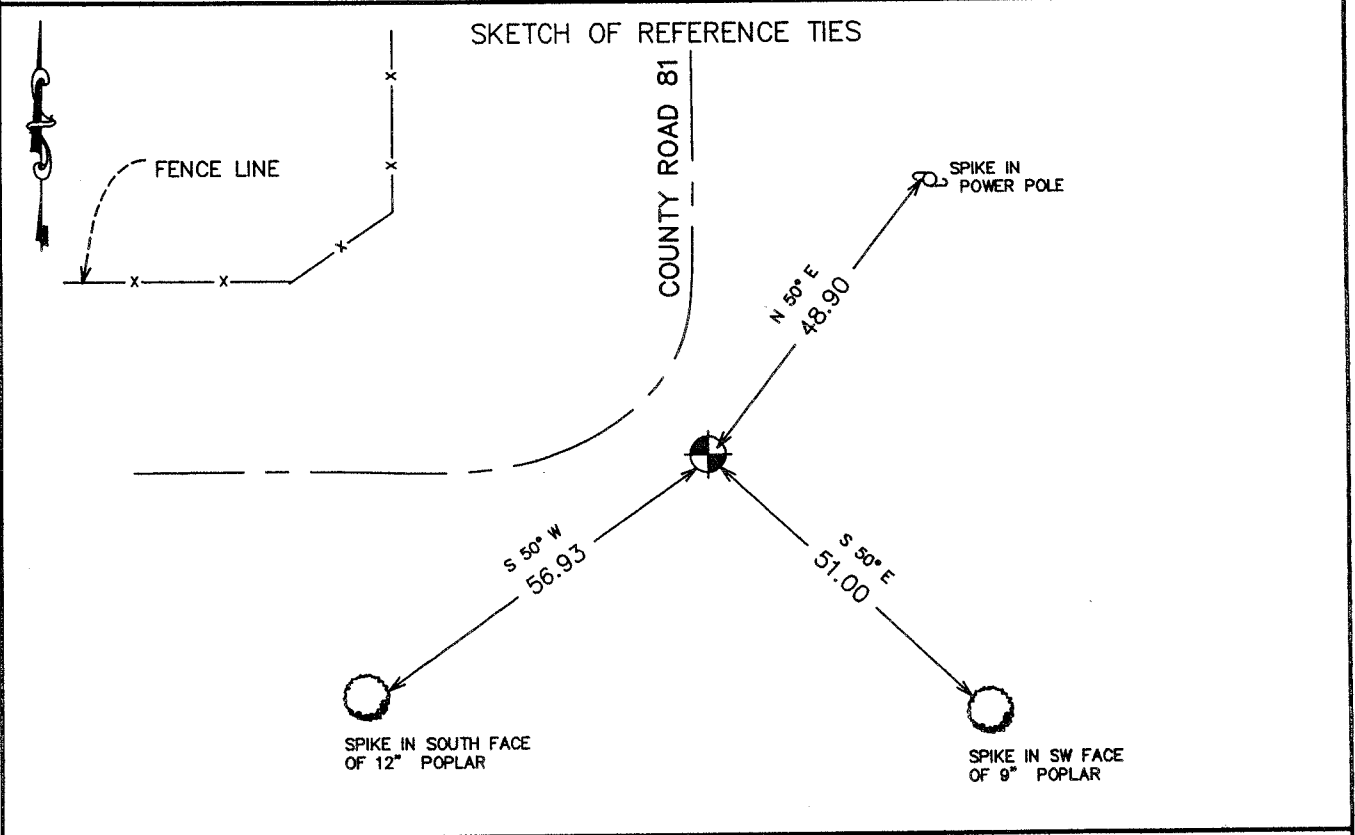
Kanabec County U.S. Survey Feet Coordinates
NAD 1983, HARN 1996 Adjustment
Obtained by RTK GPS Observation

Northing= 250373.29

Easting= 370901.39

Note: NAD 1983; HARN 1996 Adjustment
coordinates are NOT compatible with
NAD 1983 coordinates

Note: 1 Meter=3937/1200 U.S. Survey Feet



Statement of evidence relative to this corner location is on back of page.

I hereby certify that this document and the data contained herein was prepared by me or under my direct supervision.

Ernest Hub 6-30-2004
Signature Date

Registration No. 9808

Land Surveyor, Professional Engineer

County Surveyor, County Engineer

OFFICE OF THE COUNTY RECORDER

County of _____

I hereby certify that this document was filed in the County Recorder's office at _____ M. on the _____ day of _____ A.D., 20____

County Recorder _____

BY _____ Deputy

DOCUMENT NO. _____

STATEMENT OF EVIDENCE
(FROM TIE SHEET 434)

Stone and pipe fit old fence to the south and fit road to the north and west.
Handschu found stone in 1933 and replaced it with an iron pipe at that time.

(2004)

On June 10, 2004, we ran a survey around part of Sections 5 and 6 and found this 1/2" iron pipe. Most of the ties were gone, but it fit Handschu's measurements to the north, west and east within 0.45'. Handschu had measured 172°58' from the s 1/4 corner of Section 6, and we measured 172°57'38" in June. We accepted this iron to be the perpetuated location and established Kanabec County Coordinates on this position. We also took additional ties.