

# CERTIFICATE OF LOCATION OF GOVERNMENT CORNER

NORTH QUARTER Corner of Section 29, Township 42, Range 24, 4TH P.M.  
STATE OF MINNESOTA, County of KANABEC

At the corner location shown on the sketch:  
FOUND A #7 REBAR WITH KANABEC COUNTY ALUMINUM CAP.

Kanabec County U.S. Survey Feet Coordinates  
NAD 1983, HARN 1996 Adjustment  
Obtained by RTK GPS Observation

Northing= 235690.48

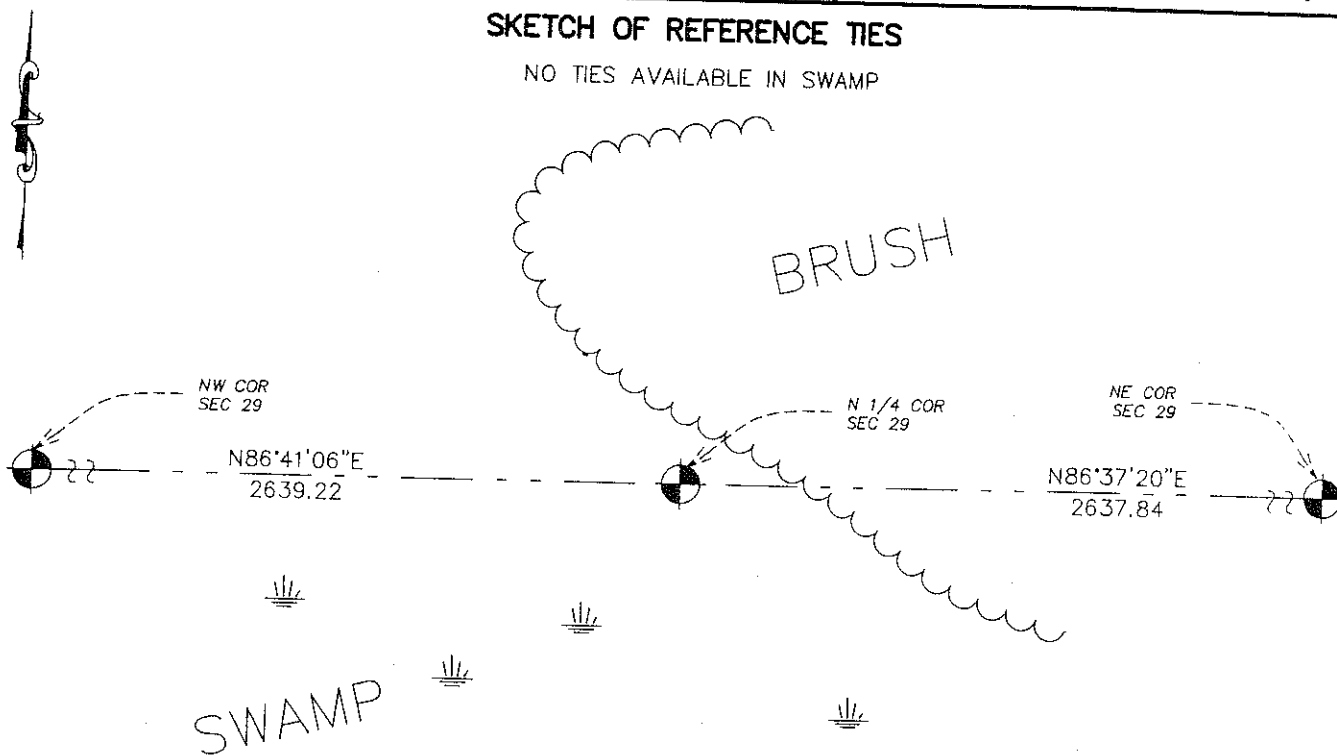
Easting= 372978.87

Note: NAD 1983, HARN 1996 Adjustment  
coordinates are NOT compatible with  
NAD 1983 coordinates

Note: 1 Meter=3937/1200 U.S. Survey Feet

## SKETCH OF REFERENCE TIES

NO TIES AVAILABLE IN SWAMP



Statement of evidence relative to this corner location is on back of page.

I hereby certify that this document and the data contained herein was prepared by me or under my direct supervision.

Ernest Blud  
Signature

2-07-2008  
Date

Registration No. 9808

Land Surveyor,  Professional Engineer

County Surveyor,  County Engineer

## OFFICE OF THE COUNTY RECORDER

County of \_\_\_\_\_

I hereby certify that this document was filed in the County Recorder's office at \_\_\_\_\_ M. on the

\_\_\_\_\_ day of \_\_\_\_\_ A.D., 20 \_\_\_\_\_

County Recorder \_\_\_\_\_

BY \_\_\_\_\_ Deputy

DOCUMENT NO. \_\_\_\_\_

NORTH QUARTER CORNER SECTION 29, TOWNSHIP 42, RANGE 24

**STATEMENT OF EVIDENCE**

THE ORIGINAL GOVERNMENT CORNER POST WAS SET BY DEPUTY SURVEYOR ISAAC BANKER ON DECEMBER 17, 1855 AND 2 BEARING TREES WERE ESTABLISHED. NO VISIBLE EVIDENCE FOR THE CORNER OR BEARING TREES COULD BE FOUND. NO RECORDS OF ANY SUBSEQUENT SURVEYS ALONG THIS LINE COULD BE FOUND AT THE KANABEC COUNTY OFFICES.

(2006)

ON NOVEMBER 26, 2006 E.G. RUD & SONS, INC. RAN A SURVEY AROUND SECTIONS 27, 28, 29, 32, AND 33 TO LOCATE EXISTING MONUMENTATION AND LINES OF OCCUPATION. THIS CORNER FALLS ON THE EDGE OF A SWAMP WITH NO LINES OF OCCUPATION. THE LOCATION FOR THIS CORNER WAS COMPUTED TO BE SET BY LOST METHODS WHICH WAS ON LINE AND EQUIDISTANT FROM THE NORTHEAST CORNER TO THE NORTHWEST CORNER OF SECTION 29. IN THE PROCESS OF SETTING THIS CORNER A #7 REBAR WITH AN ALUMINUM CAP WAS FOUND. THIS MONUMENT FIT WITHIN A FOOT OF WHERE WE HAD COMPUTED THE POSITION SO THE EXISTING MONUMENT WAS ACCEPTED AS THE LOCATION FOR THIS CORNER. KANABEC COUNTY COORDINATES WERE ESTABLISHED ON THIS POSITION USING GLOBAL POSITIONING SYSTEM (G.P.S.) EQUIPMENT.