

# CERTIFICATE OF LOCATION OF GOVERNMENT CORNER

NORTH QUARTER Corner of Section 32, Township 42, Range 24, 4TH P.M.  
STATE OF MINNESOTA, County of KANABEC

At the corner location shown on the sketch:

SET A #7 REBAR 24 INCH LONG WITH KANABEC COUNTY ALUMINUM CAP.

Kanabec County U.S. Survey Feet Coordinates  
NAD 1983, HARN 1996 Adjustment  
Obtained by RTK GPS Observation

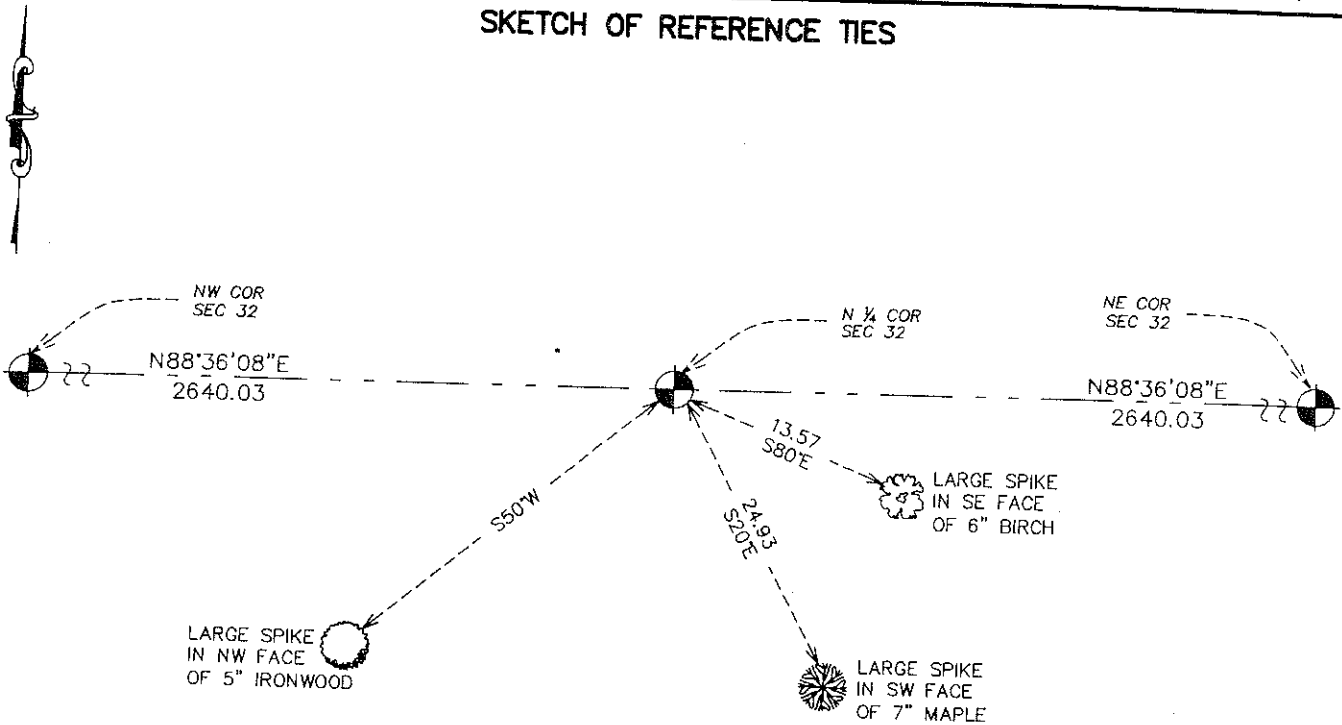
Northing= 229939.51

Easting= 373002.35

Note: NAD 1983, HARN 1996 Adjustment  
coordinates are NOT compatible with  
NAD 1983 coordinates

Note: 1 Meter=3937/1200 U.S. Survey Feet

## SKETCH OF REFERENCE TIES



Statement of evidence relative to this corner location is on back of page.

I hereby certify that this document and the data contained herein was prepared by me or under my direct supervision.

Erick J. Reed  
Signature

2-07-2008  
Date

Registration No. 9808

Land Surveyor,  Professional Engineer

County Surveyor,  County Engineer

## OFFICE OF THE COUNTY RECORDER

County of \_\_\_\_\_

I hereby certify that this document was filed in the County Recorder's office at \_\_\_\_\_ M. on the \_\_\_\_\_ day of \_\_\_\_\_ A.D., 20 \_\_\_\_\_

County Recorder \_\_\_\_\_

BY \_\_\_\_\_ Deputy

DOCUMENT NO. \_\_\_\_\_

NORTH QUARTER CORNER SECTION 32, TOWNSHIP 42, RANGE 24

**STATEMENT OF EVIDENCE**

THE ORIGINAL GOVERNMENT CORNER POST WAS SET BY DEPUTY SURVEYOR ISAAC BANKER ON DECEMBER 17, 1855 AND 2 BEARING TREES WERE ESTABLISHED. NO VISIBLE EVIDENCE FOR THE CORNER POST OR BEARING TREES COULD BE FOUND. NO RECORDS OF ANY SUBSEQUENT SURVEYS COULD BE FOUND AT KANABEC COUNTY OFFICES.

(2006)  
IN NOVEMBER 2006 E.G. RUD & SONS, INC. RAN A SURVEY AROUND SECTIONS 27 THROUGH 34 TO LOCATE EXISTING MONUMENTS AND LINES OF OCCUPATION. NO LINES OF OCCUPATION COULD BE FOUND WITHIN 200 FEET OF THIS CORNER. THEREFORE THE CORNER WAS SET BY LOST METHODS, TIES WERE TAKEN, AND KANABEC COUNTY COORDINATES WERE ESTABLISHED ON THIS POSITION USING GLOBAL POSITIONING SYSTEM (G.P.S.) EQUIPMENT.