

# CERTIFICATE OF LOCATION OF GOVERNMENT CORNER

Northeast Corner of Section 8, Township 42 North, Range 24 West,  
4th Principal Meridian, Kanabec County, State of Minnesota

At the corner location shown on the sketch:  
On 5/10/2019 set a 7/8" x 24" Rebar with Aluminum Cap  
in place of a found 1" Iron Pipe.

Kanabec County U.S. Survey Feet Coordinates  
NAD 1983, HARN 1996 Adjustment  
Obtained by RTK GPS observation  
Northing: 250219.0122  
Easting: 376286.4483

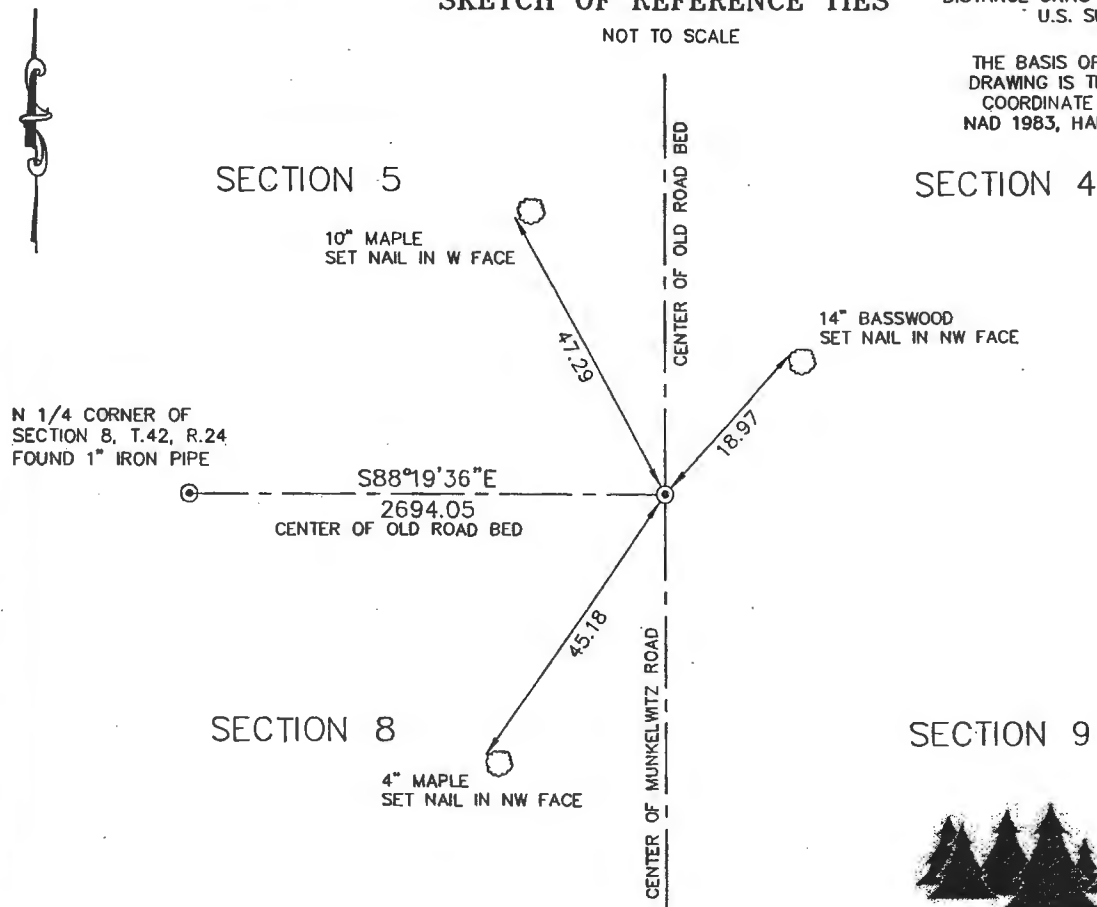
Note: NAD 1983, HARN 1996 Adjustment  
coordinates are NOT compatible with  
NAD 1983 coordinates  
Note: 1 Meter = 3937/1200 U.S. Survey Feet

## SKETCH OF REFERENCE TIES

DISTANCE UNITS FOR THIS DRAWING IS  
U.S. SURVEY FEET

NOT TO SCALE

THE BASIS OF BEARINGS FOR THIS  
DRAWING IS THE KANABEC COUNTY  
COORDINATE SYSTEM BY MNDOT,  
NAD 1983, HARN 1996 ADJUSTMENT



**Kroschel Land Surveyors, Inc.**

1639 Main Street North, Suite 6, Pine City, MN 55063  
Phone: 320-629-3267 Fax: 320-629-0176

Statement of evidence relative to this corner location is on back of page.

I hereby certify that this report was prepared by me  
or under my direct supervision, that the United  
States public land survey monument record is  
correct and complete to the best of my knowledge  
and belief, and that I am a duly Licensed Land  
Surveyor under the laws of the State of Minnesota.

**OFFICE OF THE COUNTY RECORDER**  
County of Kanabec

I hereby certify that this document was filed in the  
County Recorder's office at \_\_\_\_\_ .M. on the  
\_\_\_\_\_ day of \_\_\_\_\_ A.D., 20\_\_\_\_

County Recorder \_\_\_\_\_, Deputy

DOCUMENT NO. \_\_\_\_\_

Tyler J. Kroschel, County Surveyor

3/5/2021  
Date

License No. 44490

Statement of Evidence:

In December of 1855, Deputy Surveyor Isaac Banker set a post to mark the Northeast Corner of Section 8, Township 42 North, Range 24 West, 4th Principal Meridian.

Reference ties were taken to:

- 20 inch White Birch at North 13 degrees East a distance of 16 links
- 14 inch White Birch at North 23 degrees 15 minutes West a distance of 22 links
- 9 inch Balsam at South 62 degrees 30 minutes West a distance of 21 links
- 7 inch Balsam at South 55 degrees East a distance of 12 links

All of the original Government corner evidence was searched for. None was found.

1917—A Township Supervisor's Road Order was filed in the Office of the County Auditor opening a Township road along the North line of Section 8. The road order gives no survey information.

1933—Chas Handschu, LS 464 made a survey in Sections 7 and 8, filed in Book A1 of Surveys, P.147 at the County Highway Department. Handschu set an Iron Monument at the Northeast corner of Section 8.

1982—Curtis Stoeckel, LS 13077 made a survey in Section 8 for H&G Properties, Inc. Stoeckel found an Iron Monument set by 1933 survey at the Northeast corner of Section 8.

2001—Kevin Festler, LS 22702 made a survey of a Cartway along the east line of Section 8. Festler found a 1" Iron Pipe set by C.K. Handschu at the Northeast corner of Section 8.

In May 2019, I made a survey around Section 8, Township 42 North, Range 24 West, 4th Principal Meridian for Tom Howard to locate existing monuments, lines of occupation and establish search areas.

On 5/10/2019 I made a search with a magnetic locator at the centerline intersection of the old road bed west and south. I found a 1" Iron Pipe which fit Handschu's distances to the west and south very well. I removed the found 1" Iron Pipe and set a 7/8" x 24" Rebar monument with Aluminum cap in its place. Established reference ties and assigned Kanabec County Coordinates.

This location was determined to be the best available evidence of the original corner monument location. No excavation was made at this location.