

CERTIFICATE OF LOCATION OF GOVERNMENT CORNER

East Quarter Corner of Section 8, Township 42 North, Range 24 West,
4th Principal Meridian, Kanabec County, State of Minnesota

At the corner location shown on the sketch:
On 5/10/2019 set a 3/4" x 72" Iron Pipe with plastic Cap
marked KROSCHEL 44490.

Kanabec County U.S. Survey Feet Coordinates
NAD 1983, HARN 1996 Adjustment
Obtained by RTK GPS observation
Northing: 247945.2626
Easting: 376285.0673

Note: NAD 1983, HARN 1996 Adjustment
coordinates are NOT compatible with
NAD 1983 coordinates
Note: 1 Meter = 3937/1200 U.S. Survey Feet

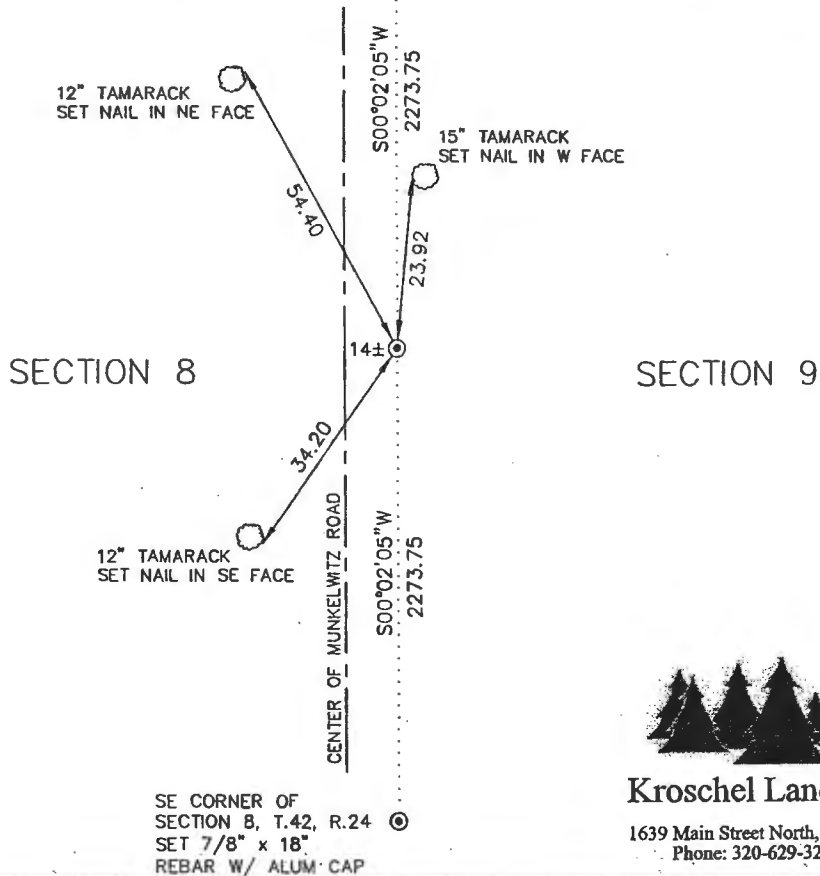
SKETCH OF REFERENCE TIES

DISTANCE UNITS FOR THIS DRAWING IS
U.S. SURVEY FEET

NOT TO SCALE

NE CORNER OF
SECTION 8, T.42, R.24
SET 7/8" x 24"
REBAR W/ ALUM CAP

THE BASIS OF BEARINGS FOR THIS
DRAWING IS THE KANABEC COUNTY
COORDINATE SYSTEM BY MNDOT,
NAD 1983, HARN 1996 ADJUSTMENT



Kroschel Land Surveyors, Inc.

1639 Main Street North, Suite 6, Pine City, MN 55063
Phone: 320-629-3267 Fax: 320-629-0176

Statement of evidence relative to this corner location is on back of page.

I hereby certify that this report was prepared by me
or under my direct supervision, that the United
States public land survey monument record is
correct and complete to the best of my knowledge
and belief, and that I am a duly Licensed Land
Surveyor under the laws of the State of Minnesota.

OFFICE OF THE COUNTY RECORDER
County of Kanabec

I hereby certify that this document was filed in the
County Recorder's office at _____ .M. on the
_____ day of _____ A.D., 20____
County Recorder _____
_____, Deputy


Tyler J. Kroschel, County Surveyor

3/5/2024
Date

License No. 44490

DOCUMENT NO. _____

Statement of Evidence:

In December of 1855, Deputy Surveyor Isaac Banker set a post to mark the East Quarter Corner of Section 8, Township 42 North, Range 24 West, 4th Principal Meridian.

Reference ties were taken to:

16 inch Tamarack at South 28 degrees West a distance of 15 links

9 inch Tamarack at South 32 degrees 30 minutes East a distance of 19 links

All of the original Government corner evidence was searched for. None was found.

1933—Chas Handschu, LS 464 made a survey in Sections 7 and 8, filed in Book A1 of Surveys, P.147 at the County Highway Department. Handschu set Iron Monuments at the Northeast corner, West Quarter corner, and Center of Section 8. It appears that he computed a location for the East Quarter corner of Section 8 by prorating between the Northeast corner of Section 8 and the Southeast corner of Section 17. No monument was set.

1982—Curtis Stoeckel, LS 13077 made a survey in Section 8 for H&G Properties, Inc. Stoeckel found an Iron Monuments set by 1933 survey at the Northeast corner and Center of Section 8. Stoeckel also computed the East Quarter corner of Section 8 using Handschu's dimensions. No monument was set.

2001—Kevin Festler, LS 22702 made a survey of a Cartway along the east line of Section 8. Festler did not establish a position for the East Quarter corner of Section 8.

In May 2019, I made a survey around Section 8, Township 42 North, Range 24 West, 4th Principal Meridian for Tom Howard to locate existing monuments, lines of occupation and establish search areas.

On 5/10/2019 I made a search with a magnetic locator at a prorated distance between the Northeast corner of Section 8 and the Southeast corner of Section 17. No evidence was found. The road bed appears to be offset to the west in this area. A straight line between the Northeast corner of Section 8 and the Southeast corner of Section 17 is 14 feet east of the road bed. I considered many different positions for this corner, as the east lines of Sections 8 and 17 are very short compared to the GLO distances. The GLO topography distances did not seem to match the existing terrain. Handschu did not find any evidence of the corner in 1933 and appears to compute the corner lost. I determined the corner lost and set a 3/4" x 72" Iron Pipe monument with plastic cap morked KROSCHER 44490 on-line and halfway between the NE and SE corners of Section 8. I measure 2273.75 feet to the Northeast corner of Section 8 (Handschu 2275.0). This location fits found monuments at the Center of Section 8 and the West Quarter corner of Section 8, extended east. Established reference ties and assigned Kanabec County Coordinates.

This location was determined to be the best available evidence of the original corner monument location. No excavation was made at this location.