

CERTIFICATE OF LOCATION OF GOVERNMENT CORNER

North Quarter Corner of Section 21, Township 42 North, Range 24 West,
4th Principal Meridian, Kanabec County, State of Minnesota

At the corner location shown on the sketch:
On 1/19/2010 set a 1/2" x 14" Iron Pipe with Plastic Cap marked RLS 44490.

Kanabec County U.S. Survey Feet Coordinates
NAD 1983, HARN 1996 Adjustment
Obtained by RTK GPS observation
Northing: 241088.8423
Easting: 378904.8361

Note: NAD 1983, HARN 1996 Adjustment coordinates are NOT compatible with NAD 1983 coordinates
Note: 1 Meter = 3937/1200 U.S. Survey Feet

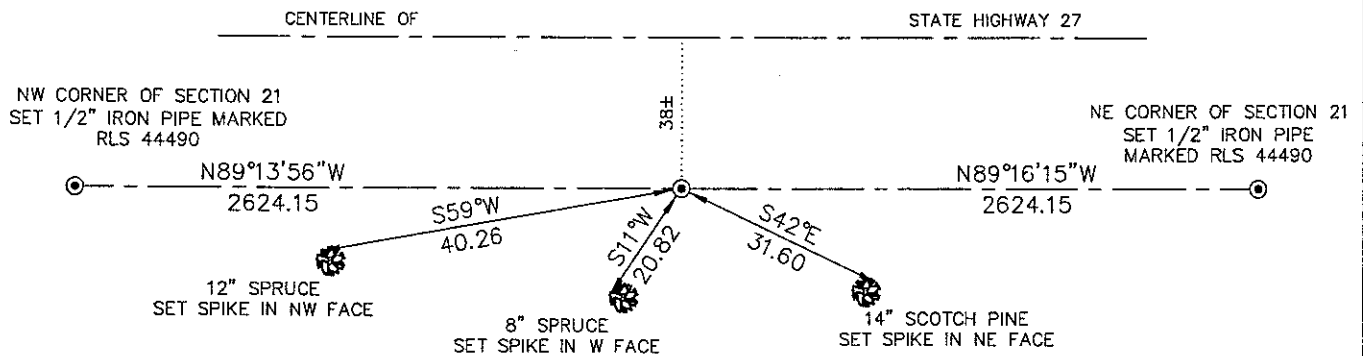
SKETCH OF REFERENCE TIES

NOT TO SCALE

BEARINGS SHOWN TO REFERENCE TIES ARE MAGNETIC COMPASS BEARINGS. DISTANCE UNITS FOR THIS DRAWING IS U.S. SURVEY FEET

BEARINGS SHOWN ARE BASED ON THE KANABEC COUNTY COORDINATE SYSTEM BY MNDOT, NAD 1983, HARN 1996 ADJUSTMENT

SECTION 16



SECTION 21



Kroschel Land Surveyors, Inc.

1639 Main Street North, Suite 6, Pine City, MN 55063
Phone: 320-629-3267 Fax: 320-629-0176

Statement of evidence relative to this corner location is on back of page.

I hereby certify that this document and the data contained herein was prepared by me or under my direct supervision.

Tyler J. Kroschel

3-29-2010
Date

License No. 44496

- Land Surveyor
- County Surveyor

OFFICE OF THE COUNTY SURVEYOR

County of Pine

I hereby certify that this document was filed in the County Surveyor's office at _____ .M. on the _____ day of _____ A.D., 20____

County Surveyor _____
By _____, Deputy

DOCUMENT NO. _____

117/13

Statement of Evidence:

In December of 1855, Deputy Surveyor Isaac Banker set a post to mark the North Quarter Corner of Section 21, Township 42 North, Range 24 West, 4th Principal Meridian.

Reference ties were taken to:

5 inch Aspen at North 18 degrees West a distance of 13 links

5 inch Aspen at South 3 degrees West a distance of 14 links

All of the original Government corner evidence was searched for. None was found.

1909—County Surveyor John Nelson made a survey along the north line of Sections 20 and 21, per the records of the Kanabec County Highway Department. He did not find the original government post. He does not state if a monument was set.

1960±—MNDOT right of way map for State Highway 27 shows the section corner located at the intersection of the centerline of the old road bed and a fence line north. The corner being 38.0 feet south of the centerline of the State Highway. No monument was found or set.

In January 2010, a survey was made around Section 21, Township 42 North, Range 24 West, 4th Principal Meridian for Lois Olson to locate existing monuments, lines of occupation and establish search areas.

On 1/19/2010 a search was made with a magnetic locator. No evidence of corner was found. I set a 1/2" x 14" Iron Pipe with plastic cap marked RLS 44490 at the computed centerline of the old road bed and halfway between the Northeast and Northwest corners of Section 21. This position being approximately 38 feet south of the centerline of State Highway 27. Established reference ties and assigned Kanabec County Coordinates. This location was determined to be the best available evidence of the original corner monument location.

I did not use the east-west position of the fence line shown on the highway right of way map. This location is approximately 60 feet further west, which would have created a large shortage in the Northwest Quarter. There are no occupation lines near this corner today.

We measure 2624.15 feet (Nelson 2604.36 feet) to the Northwest corner of Section 21, and 2624.15 feet (Nelson 2605.02 feet) to the Northeast corner of Section 21.

No excavation was made at this location. The corner lies in the ditch of the State Highway. Any evidence would have been destroyed by road construction.



Kroschel Land Surveyors, Inc.

1639 Main Street North, Suite 6, Pine City, MN 55063
Phone: 320-629-3267 Fax: 320-629-0176