

# CERTIFICATE OF LOCATION OF GOVERNMENT CORNER

Northeast Corner of Section 20, Township 42 North, Range 24 West,  
4th Principal Meridian, Kanabec County, State of Minnesota

At the corner location shown on the sketch:  
On 1/19/2010 set a 1/2" x 6" Iron Pipe with Plastic Cap marked RLS 44490.

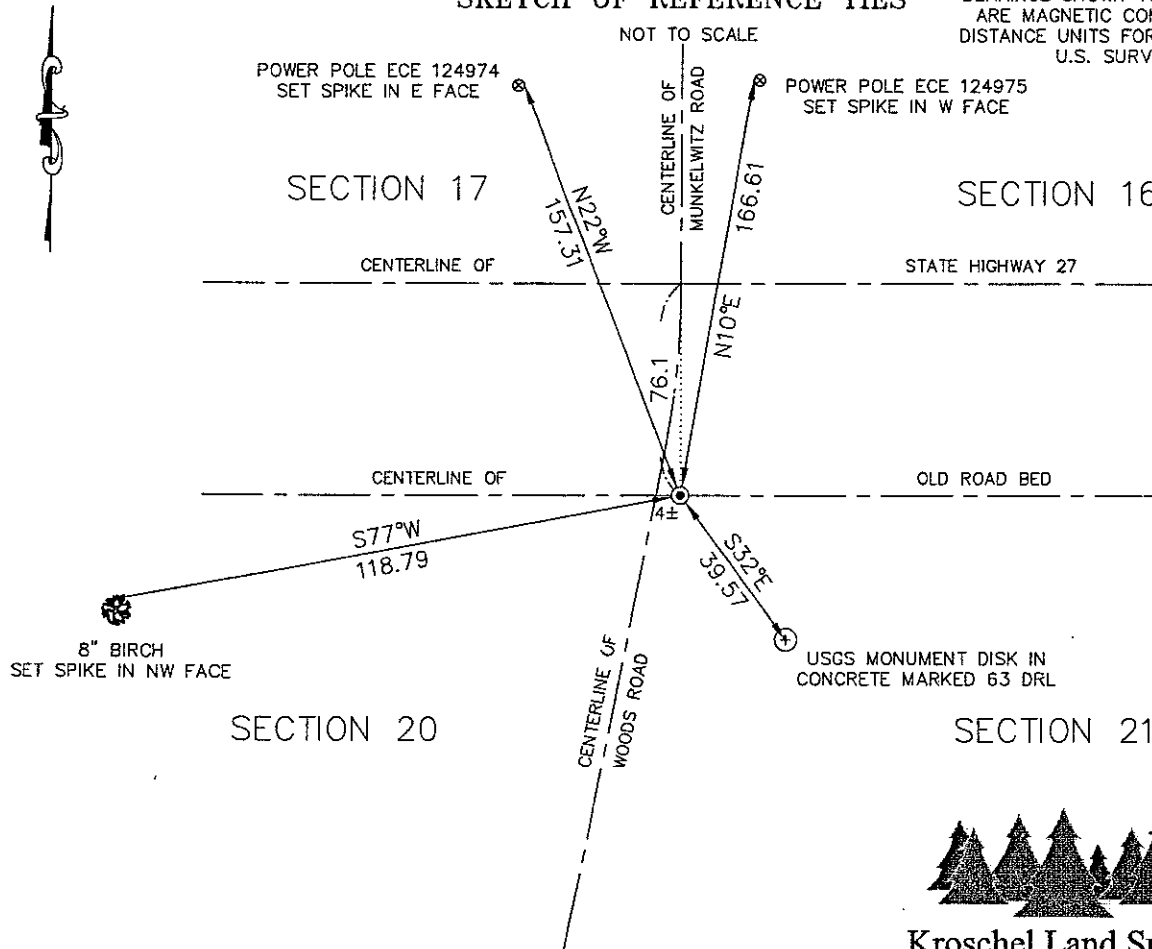
Kanabec County U.S. Survey Feet Coordinates  
NAD 1983, HARN 1996 Adjustment  
Obtained by RTK GPS observation  
Northing: 241124.0041  
Easting: 376280.9242

Note: NAD 1983, HARN 1996 Adjustment  
coordinates are NOT compatible with  
NAD 1983 coordinates  
Note: 1 Meter = 3937/1200 U.S. Survey Feet

### SKETCH OF REFERENCE TIES

BEARINGS SHOWN TO REFERENCE TIES  
ARE MAGNETIC COMPASS BEARINGS  
DISTANCE UNITS FOR THIS DRAWING IS  
U.S. SURVEY FEET

117/12



**Kroschel Land Surveyors, Inc.**

1639 Main Street North, Suite 6, Pine City, MN 55063  
Phone: 320-629-3267 Fax: 320-629-0176

Statement of evidence relative to this corner location is on back of page.

I hereby certify that this document and the data contained herein was prepared by me or under my direct supervision.

Tyler J. Kroschel      3-29-2010  
Tyler J. Kroschel      Date

License No. 44490

- Land Surveyor
- County Surveyor

### OFFICE OF THE COUNTY SURVEYOR

County of Pine

I hereby certify that this document was filed in the  
County Surveyor's office at \_\_\_\_\_ .M. on the  
\_\_\_\_\_ day of \_\_\_\_\_ A.D., 20 \_\_\_\_\_

County Surveyor \_\_\_\_\_  
By \_\_\_\_\_, Deputy

DOCUMENT NO. \_\_\_\_\_

Statement of Evidence:

In December of 1855, Deputy Surveyor Isaac Banker set a post to mark the Northeast Corner of Section 20, Township 42 North, Range 24 West, 4th Principal Meridian.

Reference ties were taken to:

- 5 inch White Birch at North 59 degrees East a distance of 16 links
- 5 inch Lind at North 78 degrees West a distance of 14 links
- 6 inch Balsam at South 68 degrees West a distance of 55 links
- 8 inch Black Ash at South 7 degrees 30 minutes East a distance of 40 links

All of the original Government corner evidence was searched for. None was found.

1909—County Surveyor John Nelson made a survey along the north line of Sections 20 and 21, per the records of the Kanabec County Highway Department. He did not find the original government post. He does not state if a monument was set.

1914—A Township Supervisor's Road Order was filed in the Office of the County Auditor opening a Township road along the East line of Sections 17 and 20. The road order gives no survey information.

1960±—MNDOT right of way map for State Highway 27 shows the section corner located at the intersection of roads, 76.1 feet south of the centerline of the State Highway. No monument was found or set.

1988—Herb Lemire, RLS 13349 made a survey around Section 20 for Lowell Schraeder. He established the northeast corner of Section 20 using MNDOT right of way map information. No corner certificate was filed. I do not know what type of monument Mr. Lemire set, if any.

In January 2010, a survey was made around Section 21, Township 42 North, Range 24 West, 4th Principal Meridian for Lois Olson to locate existing monuments, lines of occupation and establish search areas.

On 1/19/2010 a search was made with a magnetic locator. No evidence of corner was found. I set a 1/2" x 6" Iron Pipe with plastic cap marked RLS 44490 at the corner location using the stationing information on the State Highway right of way map. Established reference ties and assigned Kanabec County Coordinates. This location was determined to be the best available evidence of the original corner monument location.

We measure 2590 feet± (Nelson 2605.02 feet) to the North Quarter corner of Section 20, 2624.15 feet (Nelson 2604.36 feet) to the North Quarter corner of Section 21, and 5248.29 feet (Nelson 5209.38 feet) to the Northeast corner of Section 21.

No excavation was made at this location. The construction maps for State Highway 27 show the old east-west road bed was obliterated. There is also a buried electric wire approximately 5 feet south of the corner location. Any evidence would have been removed by road construction and/or utility installation.



**Kroschel Land Surveyors, Inc.**

1639 Main Street North, Suite 6, Pine City, MN 55063  
Phone: 320-629-3267 Fax: 320-629-0176