

# CERTIFICATE OF LOCATION OF GOVERNMENT CORNER

North Quarter corner of Section 28, Township 42 North, Range 24 West,  
4th Principal Meridian, Kanabec County, State of Minnesota

At the corner location shown on the sketch:  
On 12/5/2019 found a 7/8" Rebar with Aluminum Cap.

Kanabec County U.S. Survey Feet Coordinates  
NAD 1983, HARN 1996 Adjustment  
Obtained by RTK GPS observation  
Northing: 235845.9498  
Easting: 378383.3045

Note: NAD 1983, HARN 1996 Adjustment  
coordinates are NOT compatible with  
NAD 1983 coordinates

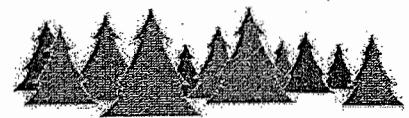
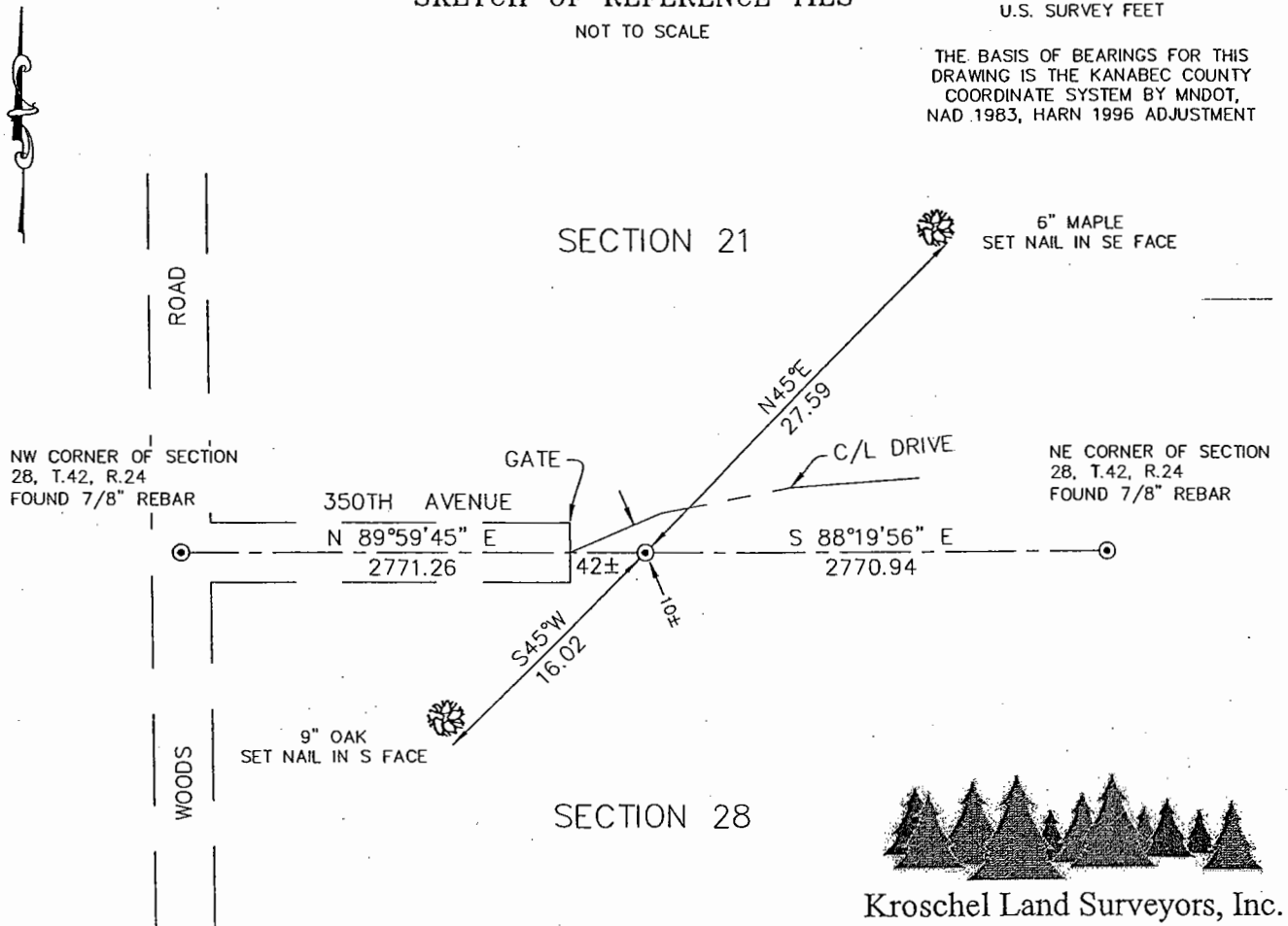
Note: 1 Meter = 3937/1200 U.S. Survey Feet

## SKETCH OF REFERENCE TIES

NOT TO SCALE

DISTANCE UNITS FOR THIS DRAWING IS  
U.S. SURVEY FEET

THE BASIS OF BEARINGS FOR THIS  
DRAWING IS THE KANABEC COUNTY  
COORDINATE SYSTEM BY MNDOT,  
NAD 1983, HARN 1996 ADJUSTMENT



**Kroschel Land Surveyors, Inc.**

1639 Main Street North, Suite 6, Pine City, MN 55063  
Phone: 320-629-3267 Fax: 320-629-0176

Statement of evidence relative to this corner location is on back of page.

I hereby certify that this report was prepared by me or under my direct supervision, that the United States public land survey monument record is correct and complete to the best of my knowledge and belief, and that I am a duly Licensed Land Surveyor under the laws of the State of Minnesota.

Tyler J. Kroschel, County Surveyor

License No. 44490

10-6-2021  
Date

**OFFICE OF THE COUNTY RECORDER**  
County of Kanabec

I hereby certify that this document was filed in the County Recorder's office at \_\_\_\_\_ M. on the \_\_\_\_\_ day of \_\_\_\_\_ A.D., 20\_\_\_\_

County Recorder \_\_\_\_\_, Deputy

DOCUMENT NO. \_\_\_\_\_

Statement of Evidence:

In October of 1855, Deputy Surveyor Isaac Banker set a post to mark the North Quarter Corner of Section 28, Township 42 North, Range 24 West, 4th Principal Meridian.

Reference ties were taken to:

- 5 inch White Birch at North 34 degrees 30 minutes East a distance of 19 links
- 5 inch Aspen at South 64 degrees 30 minutes West a distance of 20 links

All of the original Government corner evidence was searched for. None was found.

2008—Former County Surveyor Ernie Rud, RLS 9808 made a survey in Section 28. He established the North Quarter corner, but did not file a Certificate of Location of Government Corner.

In December 2019, I made a survey around Section 21, Township 42 North, Range 24 West, 4th Principal Meridian for Linda Dahlen to locate existing monuments, lines of occupation and establish search areas.

On 12/5/2019, I found a 7/8" Rebar monument with an Aluminum cap on the easterly extension of the centerline of the Road running West and at a proportional distance between the NE and NW corners of Section 28. Established reference ties and assigned Kanabec County Coordinates. This location was determined to be the best available evidence of the original corner monument location.

No excavation was made at this location.