

CERTIFICATE OF LOCATION OF GOVERNMENT CORNER

NORTHEAST Corner of Section 29, Township 42, Range 24, 4TH P.M.

STATE OF MINNESOTA, County of KANABEC

At the corner location shown on the sketch:

ON 6/16/2008 SET A #7 REBAR WITH AN ALUMINUM KANABEC COUNTY CAP 0.5 FEET BELOW GRADE.

Kanabec County U.S. Survey Feet Coordinates
NAD 1983, HARN 1996 Adjustment
Obtained by RTK GPS Observation

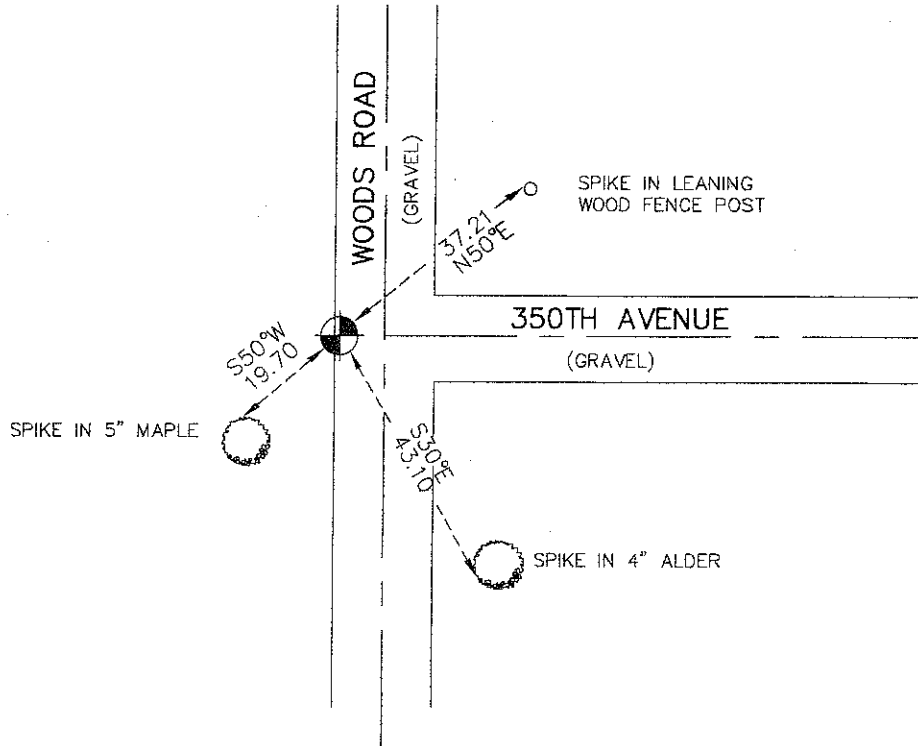
Northing= 235845.90

Easting= 375612.13

Note: NAD 1983, HARN 1996 Adjustment coordinates are NOT compatible with NAD 1983 coordinates

Note: 1 Meter=3937/1200 U.S. Survey Feet

SKETCH OF REFERENCE TIES



Statement of evidence relative to this corner location is on back of page.

I hereby certify that this document and the data contained herein was prepared by me or under my direct supervision.

Ernest Dub
Signature

12-28-2011
Date

OFFICE OF THE COUNTY RECORDER

County of _____

I hereby certify that this document was filed in the County Recorder's office at _____ M. on the _____ day of _____ A.D., 20____

_____ day of _____ A.D., 20____

County Recorder _____

BY _____ Deputy

DOCUMENT NO. _____

Registration No. 9808

Land Surveyor, Professional Engineer

County Surveyor, County Engineer

NE CORNER, SEC. 29, T42, R24

STATEMENT OF EVIDENCE

THE ORIGINAL CORNER WAS SET ON DECEMBER 17, 1855 BY U.S. DEPUTY SURVEYOR ISAAC BANKER AND 2 BEARING TREES WERE ESTABLISHED

NO VISIBLE EVIDENCE COULD BE FOUND FOR THE ORIGINAL CORNER OR BEARING TREES.

NO RECORDS OF ANY SUBSEQUENT SURVEYS COULD BE FOUND AT THE KANABEC COUNTY OFFICES.

THERE IS A ROAD RUNNING NORTH-SOUTH AND A ROAD RUNNING EAST FROM THIS CORNER LOCATION.

IN 2008, E.G. RUD AND SONS DID A SURVEY IN SEC. 28 AND FOUND A #7 REBAR WITH ALUMINUM CAP IN THE APPROXIMATE AREA OF THE INTERSECTING ROADS. NO CERTIFICATE OF LOCATION WAS ON FILE FOR THIS CORNER BUT WE ACCEPTED THIS LOCATION AS IT FIT THE INFORMATION M.B. RUDE HAD. TIES WERE TAKEN AND KANABEC COUNTY COORDINATES WERE ESTABLISHED ON THIS POSITION.