

# CERTIFICATE OF LOCATION OF GOVERNMENT CORNER

NORTHEAST Corner of Section 32, Township 42, Range 24, 4TH P.M.  
 STATE OF MINNESOTA, County of KANABEC

At the corner location shown on the sketch:  
 SET #7 REBAR WITH ALUMINUM CAP  
 ESTABLISHED KANABEC COUNTY COORDINATES ON THIS POSITION

Kanabec County U.S. Survey Feet Coordinates  
 NAD 1983, HARN 1996 Adjustment  
 Obtained by RTK GPS Observation

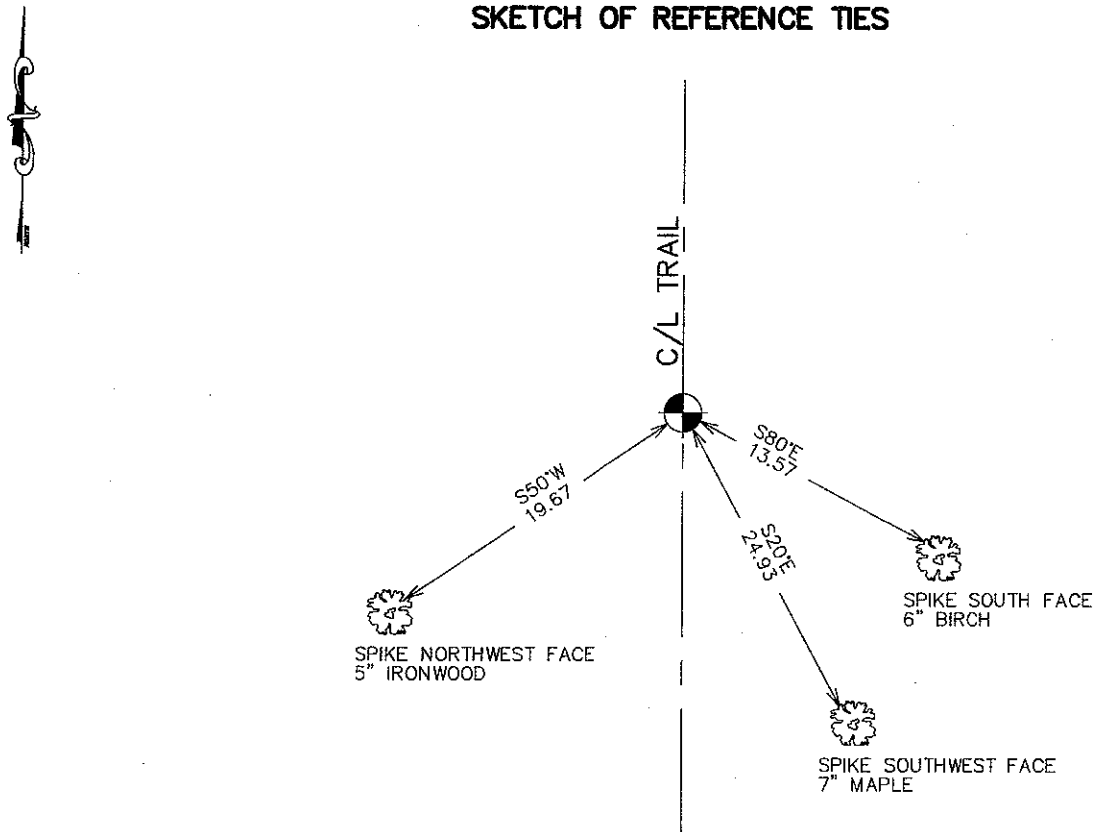
Northing= 230003.90

Easting= 375641.60

Note: NAD 1983, HARN 1996 Adjustment  
 coordinates are NOT compatible with  
 NAD 1983 coordinates

Note: 1 Meter=3937/1200 U.S. Survey Feet

## SKETCH OF REFERENCE TIES



Statement of evidence relative to this corner location is on back of page.

I hereby certify that this document and the data contained herein was prepared by me or under my direct supervision.

*Ernest J. Rud*  
 Signature

12-19-2007  
 Date

Registration No. 9808

- Land Surveyor,     Professional Engineer  
 County Surveyor,     County Engineer

### OFFICE OF THE COUNTY RECORDER

County of \_\_\_\_\_

I hereby certify that this document was filed in the County Recorder's office at \_\_\_\_\_ M. on the

\_\_\_\_\_ day of \_\_\_\_\_ A.D., 20\_\_

County Recorder \_\_\_\_\_

BY \_\_\_\_\_ Deputy

**DOCUMENT NO.** \_\_\_\_\_

## NORTHEAST CORNER SECTION 32, T42, R24

### **STATEMENT OF EVIDENCE**

THE ORIGINAL POST WAS SET BY DEPUTY SURVEYOR ISAAC BANKER ON DECEMBER 13, 1855 AND 4 WHITE PINE BEARING TREES WERE ESTABLISHED. NO EVIDENCE FOR THE CORNER OR BEARING TREES COULD BE FOUND. NO RECORDS OF ANY SUBSEQUENT SURVEYS COULD BE FOUND AT THE KANABEC COUNTY OFFICES.

THERE IS A ROAD OPENING DATED JULY 10, 1914 WHICH RUNS FROM THE SOUTHEAST CORNER OF SECTION 32 TO THE NORTHEAST CORNER OF SECTION 5. NO SURVEY WAS MADE FOR THIS OPENING.

IN OCTOBER 2006 E.G. RUD AND SONS RAN A SURVEY AROUND SECTIONS 19-21 AND 28-32. THIS CORNER WAS SET ON THE CENTERLINE OF A LOW MAINTENANCE ROAD AND AT A PROPORTIONATE DISTANCE BETWEEN THE NORTHEAST CORNER OF SECTION 29 AND THE SOUTHEAST CORNER OF SECTION 32.

A #7 REBAR WITH AN ALUMINUM CAP WAS SET, REFERENCE TIES TAKEN AND KANABEC COUNTY COORDINATES ESTABLISHED ON THIS LOCATION.