

Index No. 4224089

CERTIFICATE OF LOCATION OF GOVERNMENT CORNER

North 1/4 Corner of Section 22, Township 42, Range 24, 4th P.M.

STATE OF MINNESOTA, County of KANABEC

At the corner location shown on the sketch:

Set a 1 1/2" x 1/2" iron pipe with an aluminum cap

Kanabec County U.S. Survey Feet Coordinates
NAD 1983, HARN 1996 Adjustment
Obtained by RTK GPS Observation

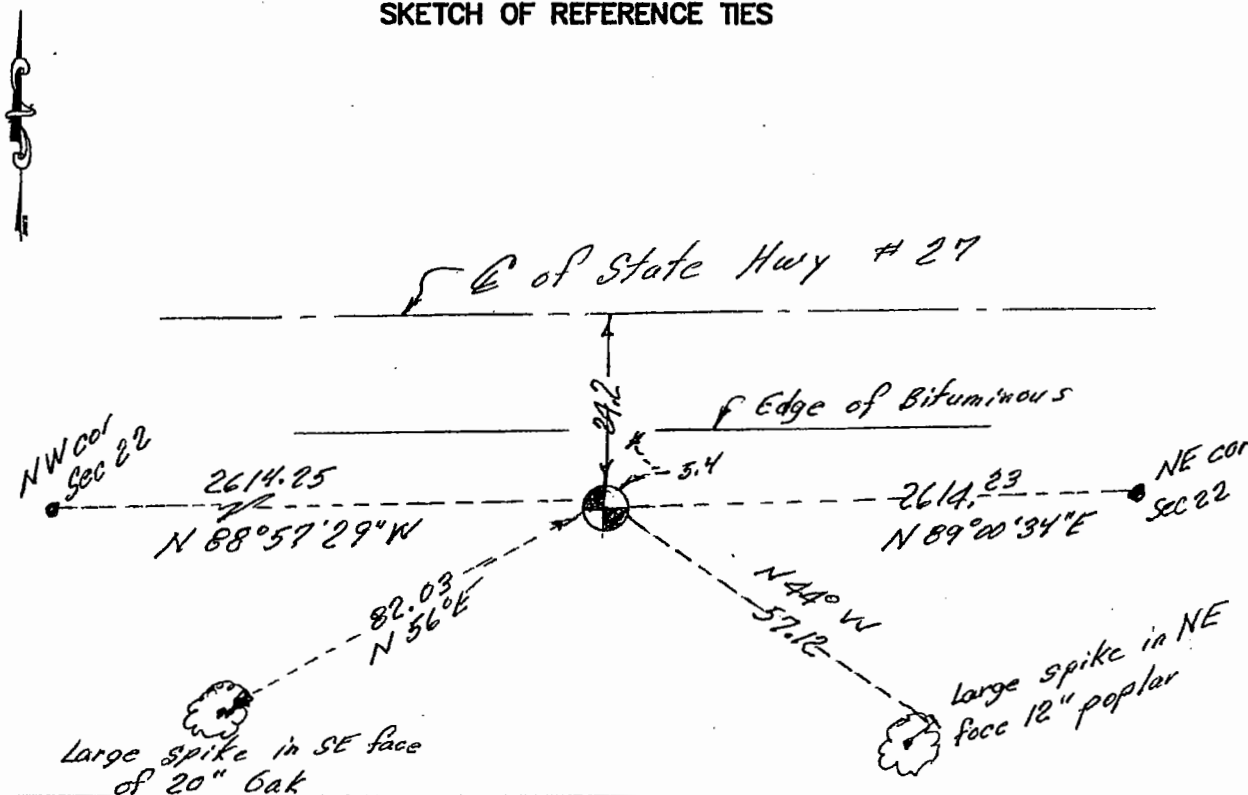
Northing = 241007.90

Easting = 384142.58

Note: NAD 1983, HARN 1996 Adjustment coordinates are NOT compatible with NAD 1983 coordinates

Note: 1 Meter = 3937/1200 U.S. Survey Feet

SKETCH OF REFERENCE TIES



Statement of evidence relative to this corner location is on back of page.

I hereby certify that this document and the data contained herein was prepared by me or under my direct supervision.

Ermatt S. Rud _____
Retired
Registration No. 9808

Land Surveyor, Professional Engineer
 County Surveyor, County Engineer

OFFICE OF THE COUNTY RECORDER

County of _____

I hereby certify that this document was filed in the County Recorder's office at _____ M. on the _____ day of _____ A.D., 20____

County Recorder _____

BY _____ Deputy

DOCUMENT NO. _____

STATEMENT OF EVIDENCE 4224089

North $\frac{1}{4}$ corner Section 22 Township 42 Range 24

The original government corner was set by Deputy Surveyor Isaac Banker on December 12, 1855. The distance in the government notes stated the north line of Section 22 to be 80.60 chains or 5319.6 feet. John Nelson, county surveyor, resurveyed the north lines of Section 20 through 23 on April 4th, 1909. He recorded the north line of Section 22 to be 78.96 chains or 5211.36 feet. The northeast and northwest corners of Section 22 have been reset from M.H.D. Right of Way map for Trunk Highway No. 27. On April 6, 2021, we measured this north line to be 5228.48 feet. We set an iron pipe with an aluminum cap equidistant from Northeast and Northwest corner of Section 22 and 24.2 feet south of the centerline of Highway 27 which was the distance noted on the Right of Way map. This was very close to being on line between northwest and northeast corner of Section 22. Ties were taken and Kanabec County coordinates established on this position.