

# CERTIFICATE OF LOCATION OF GOVERNMENT CORNER

Northeast Corner of Section 21, Township 42 North, Range 24 West,  
4th Principal Meridian, Kanabec County, State of Minnesota

At the corner location shown on the sketch:  
On 1/19/2010 set a 1/2" x 3" Iron Pipe with Plastic Cap marked RLS 44490.

Kanabec County U.S. Survey Feet Coordinates  
NAD 1983, HARN 1996 Adjustment  
Obtained by RTK GPS observation  
Northing: 241055.4414  
Easting: 381528.7685

Note: NAD 1983, HARN 1996 Adjustment coordinates are NOT compatible with NAD 1983 coordinates

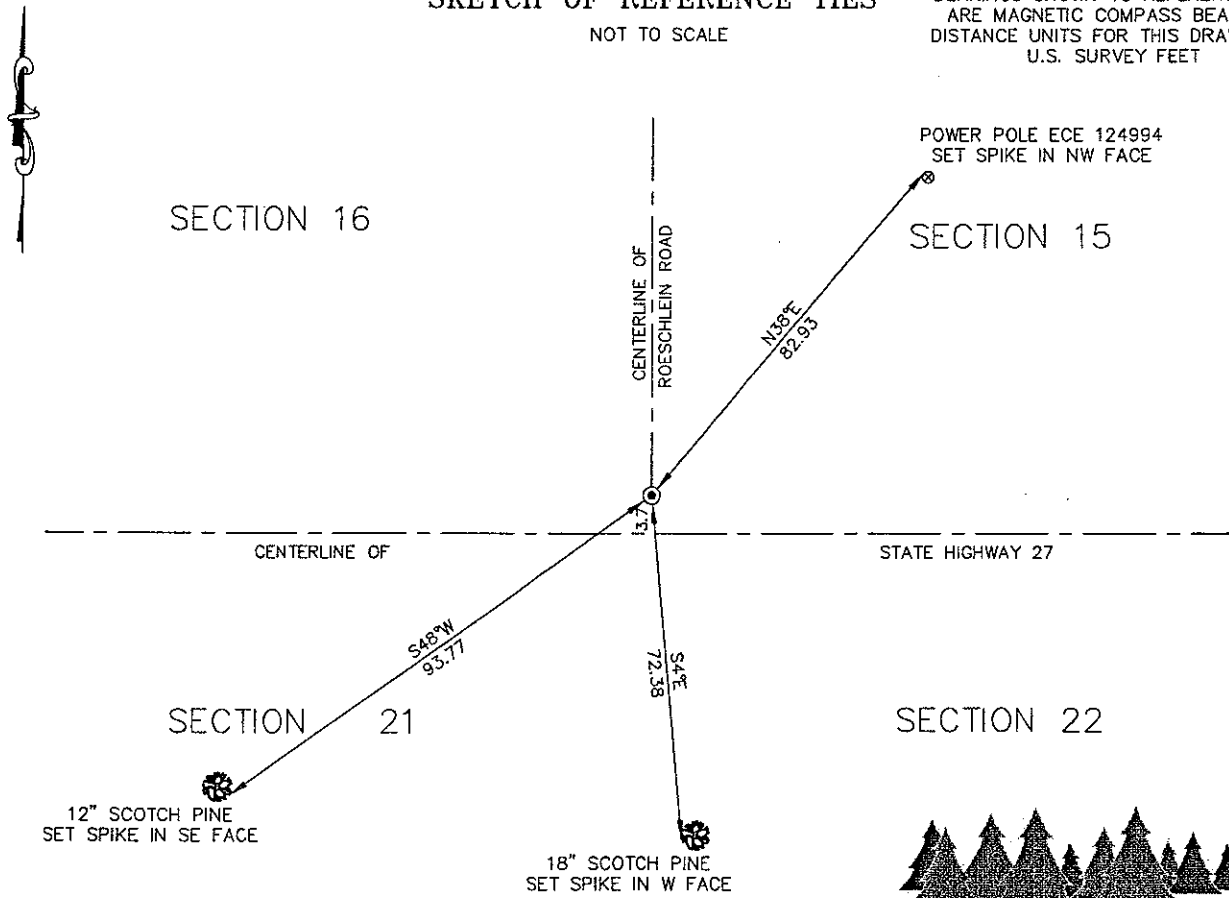
Note: 1 Meter = 3937/1200 U.S. Survey Feet

## SKETCH OF REFERENCE TIES

NOT TO SCALE

BEARINGS SHOWN TO REFERENCE TIES ARE MAGNETIC COMPASS BEARINGS  
DISTANCE UNITS FOR THIS DRAWING IS U.S. SURVEY FEET

117/13



**Kroschel Land Surveyors, Inc.**

1639 Main Street North, Suite 6, Pine City, MN 55063  
Phone: 320-629-3267 Fax: 320-629-0176

Statement of evidence relative to this corner location is on back of page.

I hereby certify that this document and the data contained herein was prepared by me or under my direct supervision.

Tyler J. Kroschel      3-29-2010  
Tyler J. Kroschel      Date

License No. 44490

- Land Surveyor
- County Surveyor

**OFFICE OF THE COUNTY SURVEYOR**  
County of Pine

I hereby certify that this document was filed in the County Surveyor's office at \_\_\_\_\_ M. on the \_\_\_\_\_ day of \_\_\_\_\_ A.D., 20\_\_\_\_  
County Surveyor \_\_\_\_\_  
By \_\_\_\_\_, Deputy

DOCUMENT NO. \_\_\_\_\_

Statement of Evidence:

In December of 1855, Deputy Surveyor Isaac Banker set a post to mark the Northeast Corner of Section 21, Township 42 North, Range 24 West, 4th Principal Meridian.

Reference ties were taken to:

- 14 inch Sugar Maple at North 41 degrees 15 minutes East a distance of 25 links
- 12 inch Balsam at North 45 degrees West a distance of 38 links
- 15 inch Balsam at South 30 degrees West a distance of 35 links
- 10 inch Balsam at South 53 degrees 30 minutes East a distance of 23 links

All of the original Government corner evidence was searched for. None was found.

1909—County Surveyor John Nelson made a survey along the north line of Sections 21 and 22, per the records of the Kanabec County Highway Department. He set a stake at the corner location and made ties.

1915—A Township Supervisor's Road Order was filed in the Office of the County Auditor opening a Township road along the West line of the Southwest Quarter of Section 15. The road order gives no survey information.

1960±—MNDOT right of way map for State Highway 27 shows the section corner located at the intersection of the centerline of the east-west township road and centerline of the township road north. The corner being 3.7 feet north of the centerline of the State Highway. No monument was found or set.

2006—County Surveyor Ernie Rud, RLS 9808, set the Northeast corner of Section 28 by double proportionate methods using the Northeast corner of Section 21. He did not set a monument or file a corner certificate for the northeast corner of Section 21.

In January 2010, a survey was made around Section 21, Township 42 North, Range 24 West, 4th Principal Meridian for Lois Olson to locate existing monuments, lines of occupation and establish search areas.

On 1/19/2010 a search was made with a magnetic locator. No evidence of corner was found. I set a 1/2" x 3" Iron Pipe with plastic cap marked RLS 44490 using the stationing information from the State Highway right of way map. Established reference ties and assigned Kanabec County Coordinates. This location was determined to be the best available evidence of the original corner monument location.

We measure 5228 feet± (Nelson 5211.36 feet) to the Northeast corner of Section 22 and 2624.15 feet (Nelson 2605.02 feet) to the North Quarter corner of Section 21

No excavation was made at this location. The Highway construction plans show this area being in a cut. Any evidence would have been destroyed by road construction.



**Kroschel Land Surveyors, Inc.**

1639 Main Street North, Suite 6, Pine City, MN 55063  
Phone: 320-629-3267 Fax: 320-629-0176