

CERTIFICATE OF LOCATION OF GOVERNMENT CORNER

NORTHEAST Corner of Section 28, Township 42, Range 24, 4TH P.M.

STATE OF MINNESOTA, County of KANABEC

At the corner location shown on the sketch:
SET A #7 REBAR WITH ALUMINUM CAP ON 12-05-2006.

Kanabec County U.S. Survey Feet Coordinates
NAD 1983, HARN 1996 Adjustment
Obtained by RTK GPS Observation

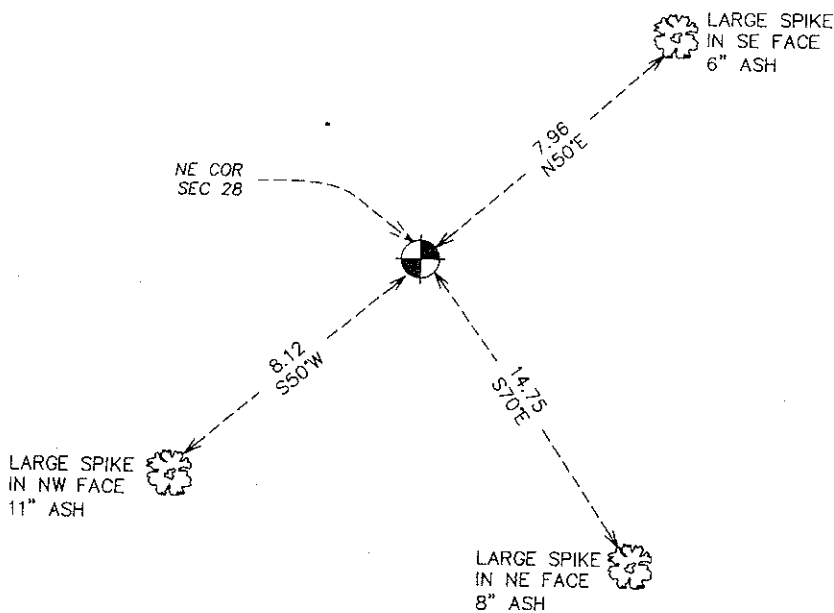
Northing= 235765.30

Easting= 381153.16

Note: NAD 1983, HARN 1996 Adjustment
coordinates are NOT compatible with
NAD 1983 coordinates

Note: 1 Meter=3937/1200 U.S. Survey Feet

SKETCH OF REFERENCE TIES



Statement of evidence relative to this corner location is on back of page.

I hereby certify that this document and the data contained herein was prepared by me or under my direct supervision.

Ernst Blud
Signature

2-07-2008
Date

Registration No. 9808

Land Surveyor, Professional Engineer

County Surveyor, County Engineer

OFFICE OF THE COUNTY RECORDER

County of _____

I hereby certify that this document was filed in the County Recorder's office at _____ M. on the

_____ day of _____ A.D., 20 _____

County Recorder _____

BY _____ Deputy

DOCUMENT NO. _____

NORTHEAST CORNER SECTION 28, TOWNSHIP 42, RANGE 24

STATEMENT OF EVIDENCE

THE ORIGINAL GOVERNMENT CORNER POST WAS SET BY DEPUTY SURVEYOR ISAAC BANKER ON DECEMBER 11, 1855 AND 4 BEARING TREES WERE ESTABLISHED. NO VISIBLE EVIDENCE FOR THE CORNER OR ACCESSORIES COULD BE FOUND. NO LINES OF OCCUPATION COULD BE FOUND WITHIN 200 FEET OF SEARCH AREAS.

(2006)

IN NOVEMBER 2006 E.G. RUD & SONS, INC. RAN A SURVEY AROUND SECTIONS 28, 29, 32, AND 33. THIS CORNER WAS ESTABLISHED BY DOUBLE PROPORTIONATE METHODS BETWEEN THE NORTHEAST CORNERS OF SECTIONS 21 AND 33 AND BETWEEN THE NORTHEAST CORNERS OF SECTIONS 29 AND 27. A #7 REBAR 24 INCHES LONG WITH AN ALUMINUM CAP WAS SET, TIES WERE TAKEN AND KANABEC COUNTY COORDINATES WERE ESTABLISHED ON THIS POSITION USING GLOBAL POSITIONING SYSTEM (G.P.S.) EQUIPMENT.