

CERTIFICATE OF LOCATION OF GOVERNMENT CORNER

East quarter Corner of Section 28, Township 42, Range 24, 4th P.M.

STATE OF MINNESOTA, County of KANABEC

At the corner location shown on the sketch:

Set a 7/8" x 24" rebar with a Kanabec County aluminum cap.

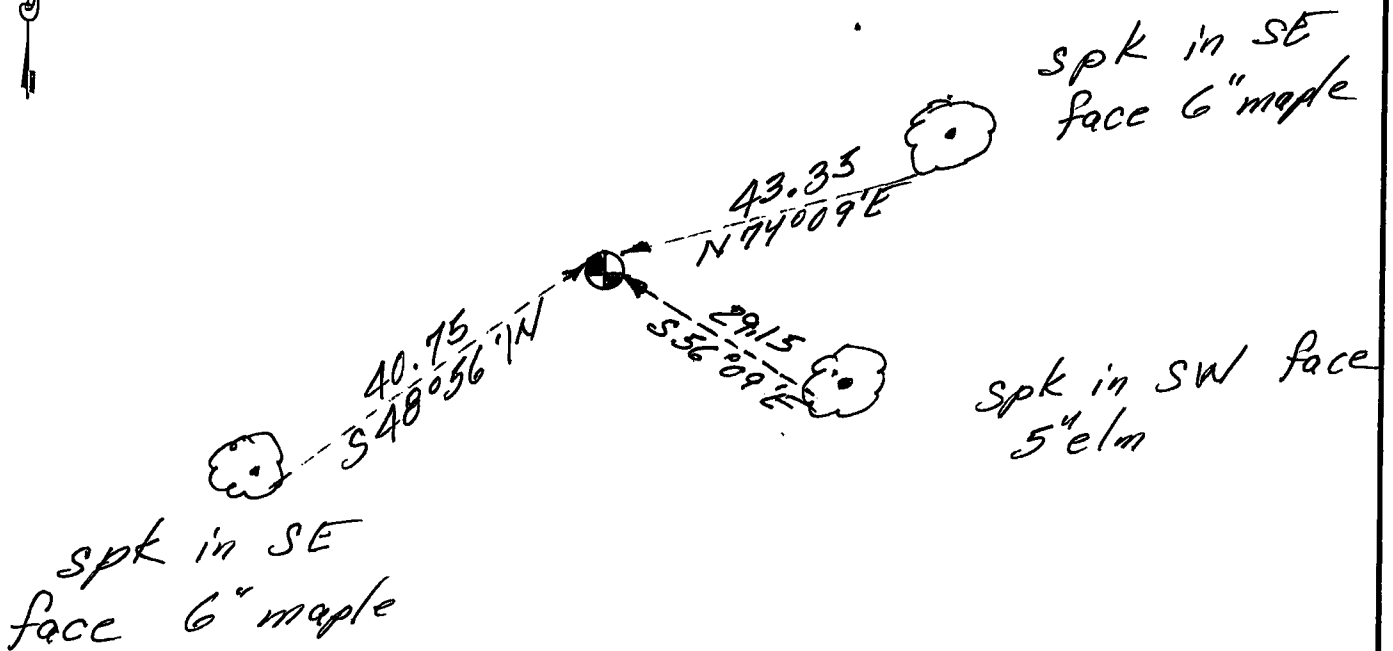
Kanabec County U.S. Survey Feet Coordinates
NAD 1983, HARN 1996 Adjustment
Obtained by RTK GPS Observation

Northing = 232502.16
Easting = 444885.59

Note: NAD 1983, HARN 1996 Adjustment coordinates are NOT compatible with NAD 1983 coordinates

Note: 1 Meter = 3937/1200 U.S. Survey Feet

SKETCH OF REFERENCE TIES



Statement of evidence relative to this corner location is on back of page.

I hereby certify that this document and the data contained herein was prepared by me or under my direct supervision.

Ernest & Rud April 28, 2014
Signature Date

Registration No. 9808

- Land Surveyor, Professional Engineer
- County Surveyor, County Engineer

OFFICE OF THE COUNTY RECORDER

County of Kanabec

I hereby certify that this document was filed in the County Recorder's office at 2:02 P.M. on the

9 day of May A.D., 2014

County Recorder Rhonda Olson

BY _____ Deputy

DOCUMENT NO. _____

The original Government post was set by U.S. Deputy Surveyor Silas Banker on November 23, 1855 and 2 bearing trees noted as being;

10" White Pine bearing South 59° 45' East at 10 Links

16" White Pine bearing North 84° 45' West at 26 Links

No evidence for the post or bearing trees could be found.

This corner falls in a heavily wooded area with no immediate lines of occupation. No records of any subsequent surveys were found at Kanabec County Offices.

Therefore we determined this to be a lost corner and set it on line and equidistant between the northeast and the southeast corners of Section 28. A 7/8" x 24" rebar was set, ties taken and Kanabec County Coordinates established on this position.