

CERTIFICATE OF LOCATION OF GOVERNMENT CORNER

NORTH QUARTER Corner of Section 14, Township 42, Range 24, 4TH P.M.

STATE OF MINNESOTA, County of KANABEC

At the corner location shown on the sketch:

SET A KANABEC COUNTY MONUMENT
AND "T" FENCE POST IN SWAMP

Kanabec County U.S. Survey Feet Coordinates
NAD 1983, HARN 1996 Adjustment
Obtained by RTK GPS Observation

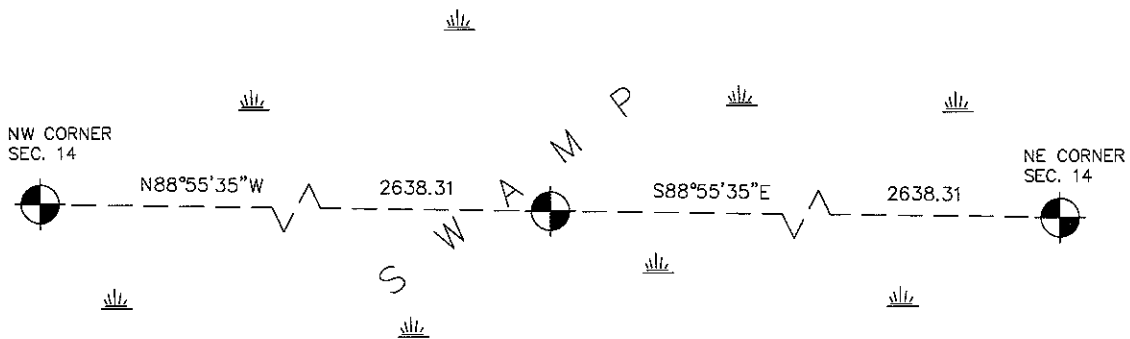
Northing= 246202.04

Easting= 389499.65

Note: NAD 1983, HARN 1996 Adjustment
coordinates are NOT compatible with
NAD 1983 coordinates

Note: 1 Meter=3937/1200 U.S. Survey Feet

SKETCH OF REFERENCE TIES



Statement of evidence relative to this corner location is on back of page.

I hereby certify that this document and the data contained herein was prepared by me or under my direct supervision.

Crest Gud
Signature

2-02-2010
Date

Registration No. 9808

Land Surveyor, Professional Engineer

County Surveyor, County Engineer

OFFICE OF THE COUNTY RECORDER

County of _____

I hereby certify that this document was filed in the County Recorder's office at _____ M. on the _____ day of _____ A.D., 20____

_____ day of _____ A.D., 20____

County Recorder _____

BY _____ Deputy

DOCUMENT NO. _____

N 1/4 CORNER, SEC. 14, T42, R24

STATEMENT OF EVIDENCE

ORIGINAL GOVERNMENT POST WAS SET ON DECEMBER 10, 1855 BY DEPUTY SURVEYOR ISAAC BANKER AND 2 BEARING TREES ESTABLISHED. NO VISIBLE EVIDENCE OF THE POST OR BEARING TREES REMAIN TODAY.

NO RECORD OF ANY SUBSEQUENT SURVEYS COULD BE FOUND IN OUR RESEARCH.

THIS CORNER FALLS IN A SWAMP WHICH AGREES WITH G.L.O. NOTES.

THIS CORNER FALLS ON THE CENTERLINE OF A MINIMUM MAINTENANCE RD. RUNNING SOUTH AND EAST OVER A SWAMPY AREA.

WE SET A KANABEC COUNTY MONUMENT AND "T" FENCE POST BY LOST METHODS AND ESTABLISHED KANABEC COUNTY COORDINATES ON THIS LOCATION USING G.P.S. EQUIPMENT. NO TIES WERE AVAILABLE WITH IN A REASONABLE DISTANCE.