

CERTIFICATE OF LOCATION OF GOVERNMENT CORNER

NORTHEAST Corner of Section 15, Township 42, Range 24, 4TH P.M.

STATE OF MINNESOTA, County of KANABEC

At the corner location shown on the sketch:

SET A KANABEC COUNTY MONUMENT

Kanabec County U.S. Survey Feet Coordinates
NAD 1983, HARN 1996 Adjustment
Obtained by RTK GPS Observation

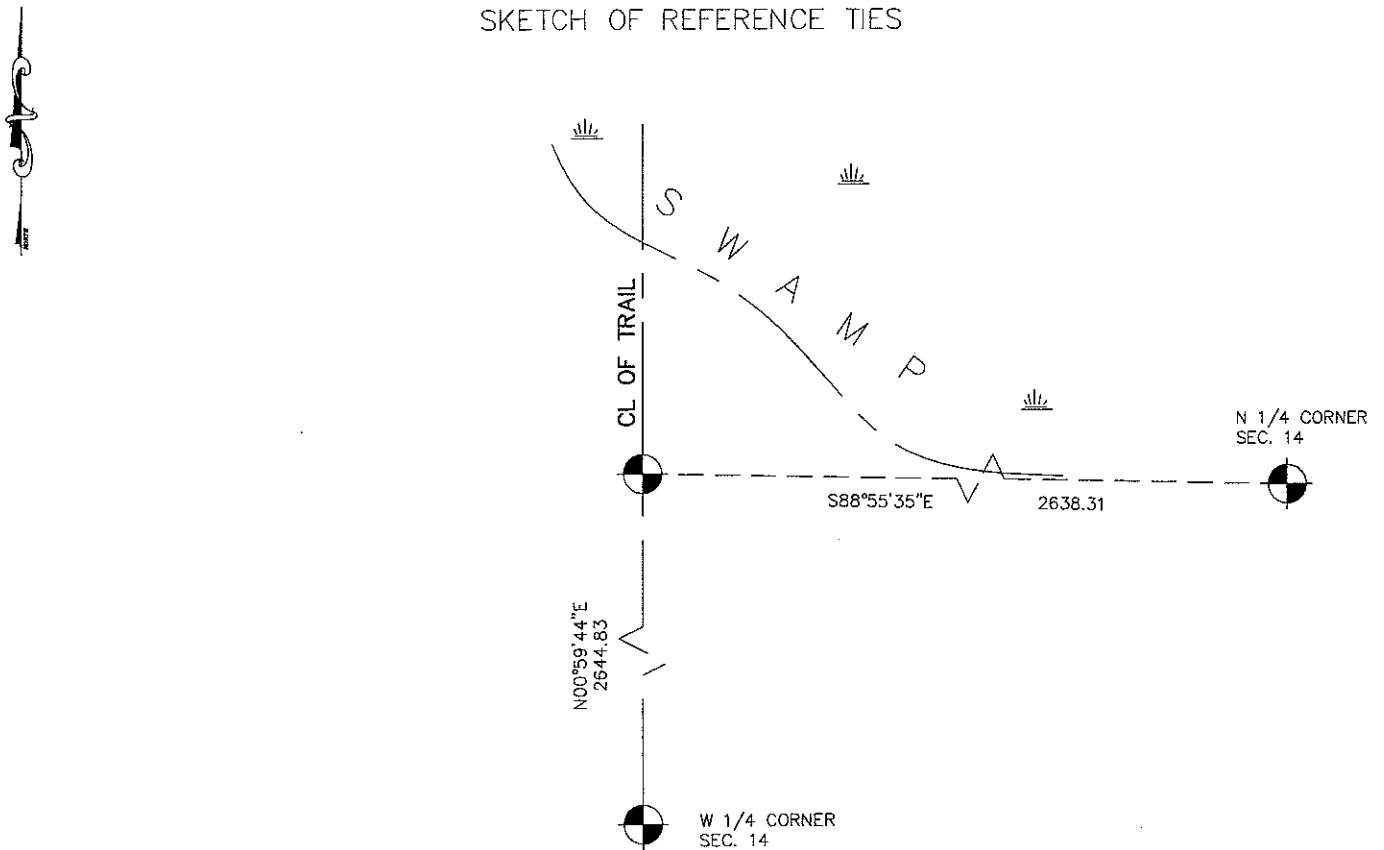
Northing= 246251.46

Easting= 386861.80

Note: NAD 1983, HARN 1996 Adjustment
coordinates are NOT compatible with
NAD 1983 coordinates

Note: 1 Meter=3937/1200 U.S. Survey Feet

SKETCH OF REFERENCE TIES



Statement of evidence relative to this corner location is on back of page.

I hereby certify that this document and the data contained herein was prepared by me or under my direct supervision.

Ernest J. Wood
Signature

2-02-2010
Date

Registration No. 9808

Land Surveyor, [] Professional Engineer

[] County Surveyor, [] County Engineer

OFFICE OF THE COUNTY RECORDER

County of _____

I hereby certify that this document was filed in the County Recorder's office at _____ M. on the

_____ day of _____ A.D., 20____

County Recorder _____

BY _____ Deputy

DOCUMENT NO. _____

NE CORNER, SEC. 15, T42, R24

STATEMENT OF EVIDENCE

ORIGINAL GOVERNMENT POST WAS SET ON DECEMBER 10, 1855 BY DEPUTY SURVEYOR ISAAC BANKER AND 2 BEARING TREES ESTABLISHED. NO VISIBLE EVIDENCE OF THE POST OR BEARING TREES REMAIN TODAY.

THERE IS A ROAD OPENING ON FILE AT THE COUNTY AUDITOR'S OFFICE ALONG THE EAST LINE OF SEC. 15 DATED APRIL 13, 1918, BUT NO SURVEY WAS MADE FOR THIS OPENING.

NO OTHER SUBSEQUENT SURVEYS COULD BE FOUND ALONG THE EAST LINE IN OUR RESEARCH.

THIS CORNER FALLS IN THE CENTERLINE OF A NORTH-SOUTH TRAIL.

WE SET THIS CORNER ON THE CENTERLINE OF THE TRAIL AND AT A DOUBLED OVER DISTANCE FROM THE E 1/4 CORNER OF SEC. 15. THIS FIT WITHIN 14 FEET OF A PROPORTIONAL DISTANCE BETWEEN THE NE CORNER OF SEC. 14 AND THE NE CORNER OF SEC. 17.

WE SET A KANABEC COUNTY MONUMENT, TOOK TIES AND ESTABLISHED KANABEC COUNTY COORDINATES ON THIS POSITION.