

# CERTIFICATE OF LOCATION OF GOVERNMENT CORNER

NORTH QUARTER Corner of Section 23, Township 42, Range 24, 4TH P.M.  
STATE OF MINNESOTA, County of KANABEC

At the corner location shown on the sketch:  
FOUND A 7/8 INCH BY 24 INCH CAPPED REBAR.

Kanabec County U.S. Survey Feet Coordinates  
NAD 1983, HARN 1996 Adjustment  
Obtained by RTK GPS Observation

Northing= 240953.34

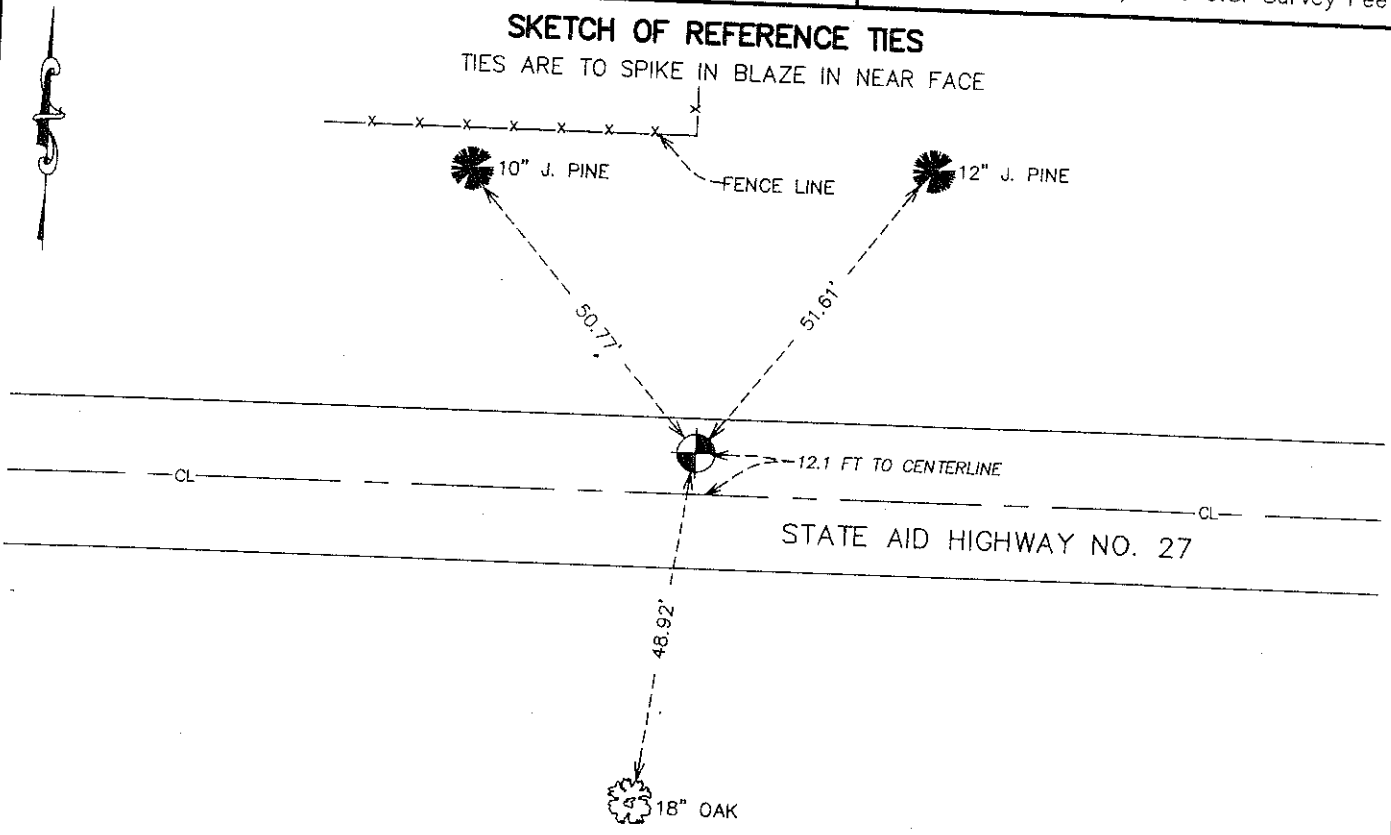
Easting= 389367.95

Note: NAD 1983, HARN 1996 Adjustment  
coordinates are NOT compatible with  
NAD 1983 coordinates

Note: 1 Meter=3937/1200 U.S. Survey Feet

### SKETCH OF REFERENCE TIES

TIES ARE TO SPIKE IN BLAZE IN NEAR FACE



Statement of evidence relative to this corner location is on back of page.

I hereby certify that this document and the data contained herein was prepared by me or under my direct supervision.

*Ernest Lund*  
Signature

2-07-2008  
Date

Registration No. 9808

Land Surveyor,  Professional Engineer

County Surveyor,  County Engineer

### OFFICE OF THE COUNTY RECORDER

County of \_\_\_\_\_

I hereby certify that this document was filed in the County Recorder's office at \_\_\_\_\_ M. on the

\_\_\_\_\_ day of \_\_\_\_\_ A.D., 20\_\_

County Recorder \_\_\_\_\_

BY \_\_\_\_\_ Deputy

DOCUMENT NO. \_\_\_\_\_

NORTH QUARTER CORNER SECTION 23, TOWNSHIP 42, RANGE 24

**STATEMENT OF EVIDENCE**

ALL OF THE ORIGINAL BEARING TREES ARE NOW GONE. THERE ARE NO RECORDS ON FILE FOR THIS CORNER AT THE COUNTY RECORDERS OFFICE.

THE STATE DEPARTMENT OF TRANSPORTATION'S RIGHT OF WAY MAP FOR STATE HIGHWAY NO. 27 SHOWS THIS CORNER AT THE INTERSECTION OF THE EAST-WEST ROAD AND FENCE LINES NORTH AND SOUTH AT A POINT 12.1 FEET NORTH OF THE CENTERLINE OF THE NEW HIGHWAY NO. 27.

IN APRIL OF 1988, M.B. RUDE RAN A SURVEY AROUND SECTION 23 TO LOCATE THE EXISTING MONUMENTATION, LINES OF OCCUPATION AND SEARCH AREAS.

NO EXCAVATION WAS MADE AT THIS CORNER BECAUSE ROAD CONSTRUCTION HAS DESTROYED ALL OF THE EVIDENCE.

M.B. RUDE SET THIS CORNER 12.1 FEET NORTH OF THE CENTERLINE OF STATE HIGHWAY NO. 27 IN LINE WITH THE FENCE LINES NORTH AND SOUTH.

IN JANUARY 2006 E.G. RUD & SONS, INC. ESTABLISHED KANABEC COUNTY COORDINATES ON THIS POSITION USING GLOBAL POSITIONING SYSTEM (G.P.S.) EQUIPMENT.