

CERTIFICATE OF LOCATION OF GOVERNMENT CORNER

EAST QUARTER Corner of Section 22, Township 42, Range 24, 4TH P.M.
 STATE OF MINNESOTA, County of KANABEC

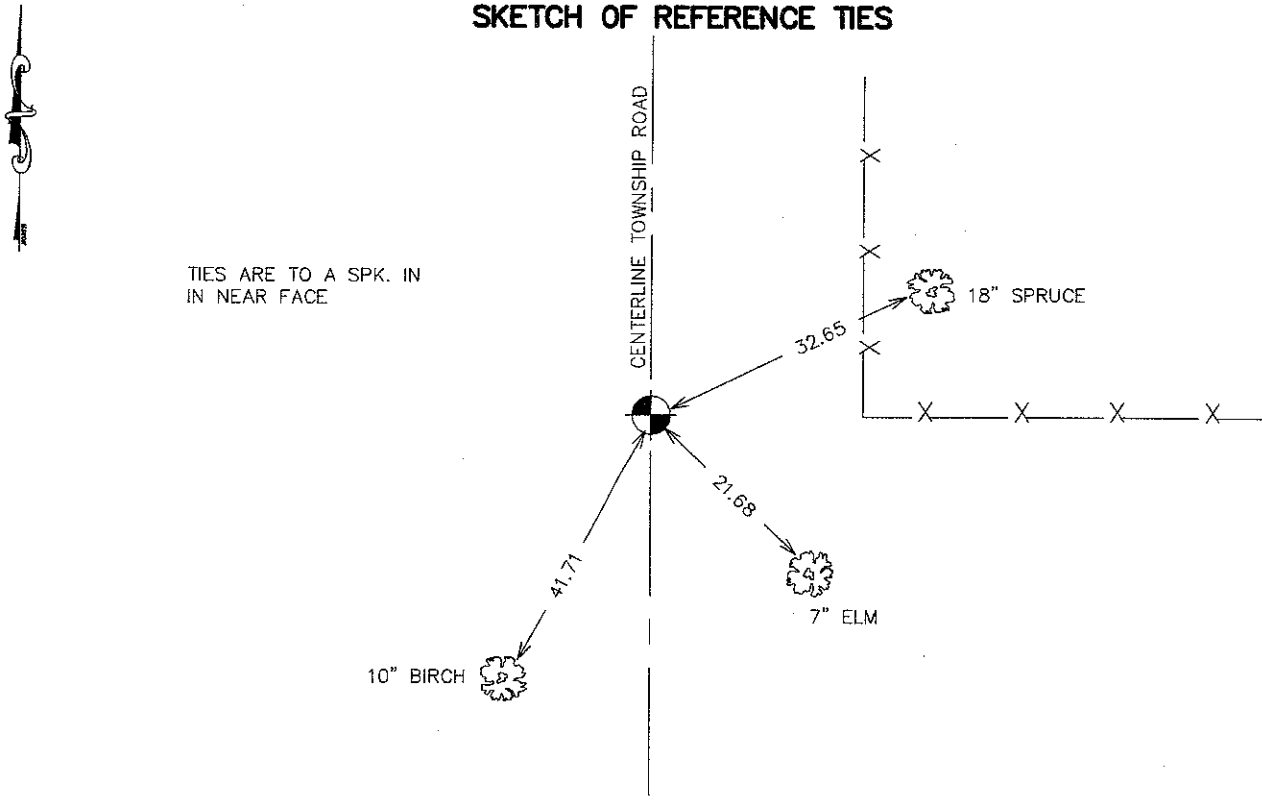
At the corner location shown on the sketch:
 ESTABLISHED KANABEC COUNTY COORDINATES ON THIS POSITION

Kanabec County U.S. Survey Feet Coordinates
 NAD 1983, HARN 1996 Adjustment
 Obtained by RTK GPS Observation

Northing= 238318.54
 Easting= 386726.90

Note: NAD 1983, HARN 1996 Adjustment
 coordinates are NOT compatible with
 NAD 1983 coordinates
 Note: 1 Meter=3937/1200 U.S. Survey Feet

SKETCH OF REFERENCE TIES



Statement of evidence relative to this corner location is on back of page.

I hereby certify that this document and the data contained herein was prepared by me or under my direct supervision.

Ernest L. Red 12-10-2007
 Signature Date

Registration No. 9808

Land Surveyor, Professional Engineer
 County Surveyor, County Engineer

OFFICE OF THE COUNTY RECORDER

County of _____

I hereby certify that this document was filed in the County Recorder's office at _____ M. on the _____ day of _____ A.D., 20____

County Recorder _____

BY _____ Deputy

DOCUMENT NO. _____

EAST QUARTER CORNER SECTION 22, T42, R24

STATEMENT OF EVIDENCE

ALL OF THE ORIGINAL BEARING TREES ARE NOW GONE.

THERE IS A TOWN ROAD ORDER DATED 1916, ON FILE AT THE COUNTY AUDITOR'S OFFICE FOR A TOWN ROAD TO RUN SOUTH ON THE SECTION LINE FOR A QUARTER OF A MILE FROM THE NORTHEAST CORNER OF SECTION 22.

IN APRIL OF 1988, M.B. RUDE RAN A SURVEY AROUND SECTION 23, TOWNSHIP 42, RANGE 24, TO LOCATE EXISTING MONUMENTS, LINES OF OCCUPATION AND SEARCH AREAS.

THERE IS AN EXISTING TOWNSHIP ROAD ALONG THE EAST LINE OF SECTION 22 AND FENCE LINES RUNNING EAST AT THE SIXTEENTH CORNER OF QUARTER OF MILE NORTH AND THE SIXTEENTH CORNER A QUARTER OF A MILE SOUTH OF THE EAST QUARTER CORNER. THERE IS ALSO A FENCE LINE RUNNING EAST AT THE QUARTER CORNER.

ON MAY 2, 1988, AN EXCAVATION WAS MADE WITH THE COUNTY BACKHOE AT THIS CORNER. THE EXCAVATION WAS 10 FEET WIDE EAST AND WEST, 15 FEET LONG NORTH AND SOUTH AND 1.5 FEET DEEP AND A HALF OF FOOT INTO NATURAL GROUND. THE EXCAVATION WAS CENTERED ON THE CENTERLINE OF THE EXISTING NORTH-SOUTH ROAD AND FENCE LINE EAST EXTENDED WEST. NO EVIDENCE WAS FOUND IN THE EXCAVATION.

THE CENTER LINE OF THE EXISTING NORTH-SOUTH ROAD AND FENCE LINE EAST EXTENDED WEST WAS ACCEPTED AS THE PERPETUATED LOCATION OF THE ORIGINAL CORNER LOCATION. THIS LOCATION IS IN HARMONY WITH LINES OF OCCUPATION AT THE SIXTEENTH CORNERS A QUARTER OF A MILE NORTH AND A QUARTER OF A MILE SOUTH.

IN OCTOBER 2006 E.G. RUD AND SONS ESTABLISHED KANABEC COUNTY COORDINATES ON THIS CORNER.