

# CERTIFICATE OF LOCATION OF GOVERNMENT CORNER

NORTHEAST Corner of Section 27, Township 42, Range 24, 4TH P.M.

STATE OF MINNESOTA, County of KANABEC

At the corner location shown on the sketch:  
FOUND THIS MONUMENT  
AND ESTABLISHED G.P.S. COORDINATES ON ITS LOCATION.

Kanabec County U.S. Survey Feet Coordinates  
NAD 1983, HARN 1996 Adjustment  
Obtained by RTK GPS Observation

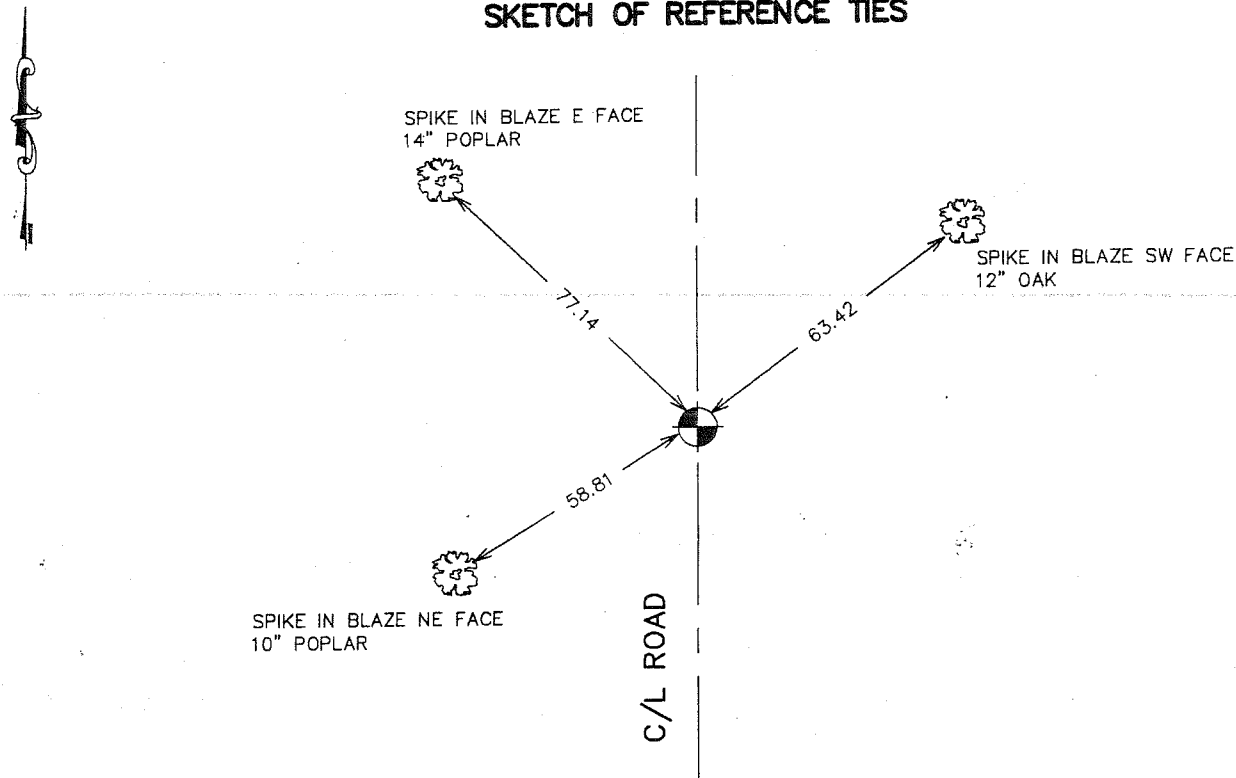
Northing= 235676.90

Easting= 386702.14

Note: NAD 1983, HARN 1996 Adjustment  
coordinates are NOT compatible with  
NAD 1983 coordinates

Note: 1 Meter=3937/1200 U.S. Survey Feet

## SKETCH OF REFERENCE TIES



Statement of evidence relative to this corner location is on back of page.

I hereby certify that this document and the data contained herein was prepared by me or under my direct supervision.

[Signature]  
Signature

2-22-2007  
Date

Registration No. Minn No 9808

Land Surveyor,  Professional Engineer

County Surveyor,  County Engineer

## OFFICE OF THE COUNTY RECORDER

County of \_\_\_\_\_

I hereby certify that this document was filed in the County Recorder's office at \_\_\_\_\_ M. on the

\_\_\_\_\_ day of \_\_\_\_\_ A.D., 20\_\_

County Recorder \_\_\_\_\_

BY \_\_\_\_\_ Deputy

DOCUMENT NO. \_\_\_\_\_

## NORTHEAST CORNER SECTION 27, T42, R24

### **STATEMENT OF EVIDENCE**

ALL OF THE ORIGINAL BEARING TREES ARE NOW GONE.

IN 1962, THE COUNTY HIGHWAY DEPARTMENT'S SURVEY CREW FOUND A PILE OF ROCKS OVER A SHARPENED TAMARAC POST AND SET A 1 1/2" IRON PIPE AND FILED A CORNER CERTIFICATE.

IN 1976, THE KANABEC COUNTY SURVEYORS CREW MADE A SEARCH FOR THIS CORNER. THEIR RECORDS DO NOT STATE WHAT THEY FOUND, BUT THEY SET A CAST ALUMINUM MONUMENT AND PULLED TIES ON IT.

IN APRIL OF 1988, M.B. RUDE RAN A SURVEY AROUND SECTIONS 23 AND 26, TOWNSHIP 42, RANGE 24 TO LOCATE EXISTING MONUMENTS, LINES OF OCCUPATION AND TO SEARCH AREAS.

ON APRIL 20, 1988, M.B. RUDE FOUND A BROKEN CAST ALUMINUM MONUMENT AND ONE REMAINING COUNTY TIE WHICH FIT THE LOCATION OF THE CAST ALUMINUM MONUMENT.

ON MAY 10, 1988 A 7/8" BY 36" CAPPED REBAR WAS SET IN PLACE OF THE CAST ALUMINUM MONUMENT AND NEW TIES WERE TAKEN.

IN DECEMBER 2006 E.G. RUD AND SONS FOUND THIS MONUMENT AND ESTABLISHED KANABEC COUNTY COORDINATES ON THIS LOCATION.