

CERTIFICATE OF LOCATION OF GOVERNMENT CORNER

Witness to the North Quarter Corner of Section 35, Township 42 North, Range 24 West,
4th Principal Meridian, Kanabec County, State of Minnesota

At the corner location shown on the sketch:
On 8/07/2013 set a 7/8" x 72" Rebar Monument with Aluminum Cap for a Witness corner.

Kanabec County U.S. Survey Feet Coordinates
NAD 1983, HARN 1996 Adjustment
Obtained by RTK GPS observation
WC Northing: 230269.7579
WC Easting: 389284.6211

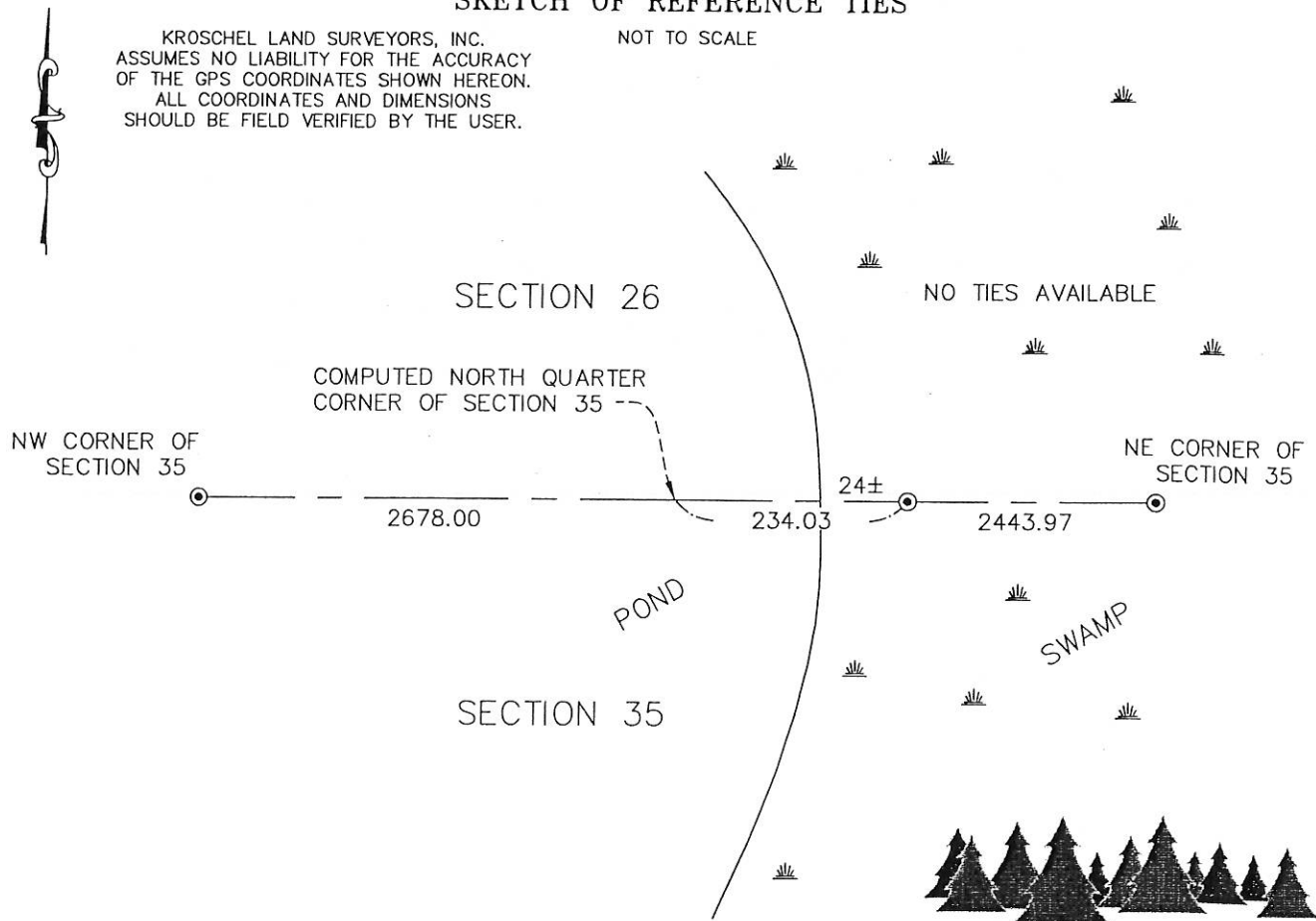
Note: NAD 1983, HARN 1996 Adjustment coordinates are NOT compatible with NAD 1983 coordinates

Note: 1 Meter = 3937/1200 U.S. Survey Feet

SKETCH OF REFERENCE TIES

KROSCHEL LAND SURVEYORS, INC.
ASSUMES NO LIABILITY FOR THE ACCURACY
OF THE GPS COORDINATES SHOWN HEREON.
ALL COORDINATES AND DIMENSIONS
SHOULD BE FIELD VERIFIED BY THE USER.

NOT TO SCALE



Kroschel Land Surveyors, Inc.

1639 Main Street North, Suite 6, Pine City, MN 55063
Phone: 320-629-3267 Fax: 320-629-0176

Statement of evidence relative to this corner location is on back of page.

I hereby certify that this survey, plan, or report was prepared by me or under my direct supervision, that the United States public land survey monument record is correct and complete to the best of my knowledge and belief, and that I am a duly Licensed Land Surveyor under the laws of the State of Minnesota.

[Signature]

Tyler J. Kroschel

1-14-2014
Date

License No. 44490

Land Surveyor County Surveyor

OFFICE OF THE COUNTY RECORDER

County of Kanabec

I hereby certify that this document was filed in the County Recorder's office at _____ .M. on the _____ day of _____ A.D., 20____

County Recorder _____

By _____, Deputy

DOCUMENT NO. _____

Statement of Evidence:

2010—Ernie Rud, RLS 9808 signed a Certificate of Location of Government Corner for the North Quarter Corner of Section 35. His statement of evidence reads as follows:

THE ORIGINAL CORNER WAS SET BY DEPUTY SURVEYOR ISAAC BANKER IN DEC. 8, 1855 AND 2 BEARING TREES NOTED AS:

8" BIRCH @ 15 LINKS BEARING N46°W

12" SUGAR MAPLE @ 38 LINKS BEARING S82°15'E

NO VISIBLE EVIDENCE REMAINS TODAY FOR THE CORNER OR THE BEARING TREES.

IN BOOK 1 OF 2 OF SURVEYS, JOHN NELSON RECORDED A SURVEY ON PAGE 1 FOR A ROAD ALONG THE EAST LINE OF SEC. 35 AND THE SOUTH LINE OF THE SE1/4 OF OF SEC. 35 DATED JAN. 9, 1901. TODAY THIS ROAD RUNS NORTH FROM THE S1/4 CORNER TO THE CENTER OF SEC. 35 THEN TO THE E1/4 CORNER. THE PLAT BOOK DATED 1915 AT THE KANABEC HISTORY CENTER SHOWS THE ROAD AT THAT TIME IN ITS PRESENT LOCATION.

THIS CORNER FALLS IN A POND CREATED BY A BEAVER DAM TO THE SOUTH. SURROUNDING PROPERTY OWNERS STATED THAT THE CORNER FELL IN THE SWAMP.

THEREFORE WE SET THIS CORNER BY LOST METHODS. WE SET A 1/2" BY 8' PIPE WITH ALUMINUM CAP IN POND AND NO TIES WERE AVAILABLE. KANABEC COUNTY COORDINATES WERE ESTABLISHED ON THIS POSITION. USING THIS POSITION THE NORTH-SOUTH CENTERLINE OF SEC. 35 FALLS WITHIN 2 FEET OF THE P.I. OF THE ROAD AT THE CENTER OF SEC. 35.

In May 2013, I made a survey around Section 26, Township 42, Range 24, 4th Principal Meridian for Mark Sutherland to locate existing monuments.

On 8/7/2013 I made a search for the corner. I could not find the 1/2" Pipe set by Rud because of high water conditions. I set a 7/8" x 72" Rebar monument with Aluminum Cap for a Witness corner near the easterly shore of a large beaver pond, as shown.

This location was determined to be the best available evidence of the original government corner monument location.



Kroschel Land Surveyors, Inc.

1639 Main Street North, Suite 6, Pine City, MN 55063
Phone: 320-629-3267 Fax: 320-629-0176