

# CERTIFICATE OF LOCATION OF GOVERNMENT CORNER

EAST QUARTER Corner of Section 34, Township 42, Range 24, 4TH P.M.

STATE OF MINNESOTA, County of KANABEC

At the corner location shown on the sketch:  
ON 12/2/2011 SET A 1/2" IRON PIPE WITH ALUMINUM CAP

Kanabec County U.S. Survey Feet Coordinates  
NAD 1983, HARN 1996 Adjustment  
Obtained by RTK GPS Observation

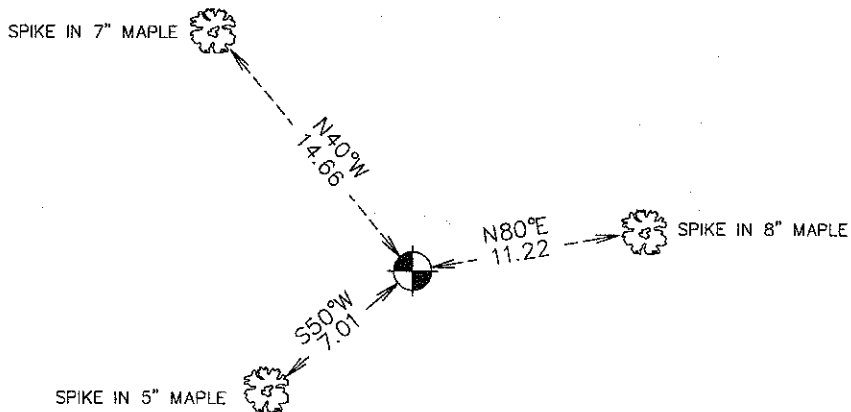
Northing= 227387.805

Easting= 386311.764

Note: NAD 1983, HARN 1996 Adjustment coordinates are NOT compatible with NAD 1983 coordinates

Note: 1 Meter=3937/1200 U.S. Survey Feet

### SKETCH OF REFERENCE TIES



Statement of evidence relative to this corner location is on back of page.

I hereby certify that this document and the data contained herein was prepared by me or under my direct supervision.

*Ernest Blud*  
Signature

12-21-2011  
Date

Registration No. 9808

Land Surveyor,      [ ] Professional Engineer

[ ] County Surveyor,      [ ] County Engineer

### OFFICE OF THE COUNTY RECORDER

County of \_\_\_\_\_

I hereby certify that this document was filed in the County Recorder's office at \_\_\_\_\_ M. on the \_\_\_\_\_ day of \_\_\_\_\_ A.D., 20\_\_\_\_

County Recorder \_\_\_\_\_

BY \_\_\_\_\_ Deputy

**DOCUMENT NO.** \_\_\_\_\_

E1/4 CORNER, SEC. 34, T42, R24

STATEMENT OF EVIDENCE

THE ORIGINAL CORNER WAS ON DECEMBER 8, 1855 AND 2 BEARING TREES NOTED AS:  
12" SPRUCE @ 7 LINKS BEARING S45°W  
7" SPRUCE @ 12 LINKS BEARING N30°E

NO VISIBLE EVIDENCE COULD BE FOUND FOR THE ORIGINAL CORNER OR BEARING TREES.

NO RECORDS OF ANY SUBSEQUENT SURVEYS COULD BE FOUND AT THE KANABEC COUNTY OFFICES.

IN DECEMBER 2011 E.G. RUD AND SONS DID A SURVEY IN SEC. 35 AND SET THIS CORNER BY SINGLE PROPORTION BETWEEN THE NE AND SE CORNER OF SEC. 34.

THIS CORNER FELL IN A HEAVILY WOODED JUST WEST OF A SWAMPY AREA.

A 1/2" BY 42" IRON PIPE WITH AN ALUMINUM CAP WAS SET, TIES WERE TAKEN AND KANABEC COUNTY COORDINATES WERE ESTABLISHED ON THIS POSITION.