

# CERTIFICATE OF LOCATION OF GOVERNMENT CORNER

East Quarter Corner of Section 2, Township 42 North, Range 24 West,  
4th Principal Meridian, Kanabec County, State of Minnesota

At the corner location shown on the sketch:  
On 10/25/2023 set a 7/8" x 36" Rebar with Aluminum cap.

Kanabec County U.S. Survey Feet Coordinates  
NAD 1983, HARN 1996 Adjustment  
Obtained by RTK GPS observation  
Northing: 253755.0557  
Easting: 392123.1453

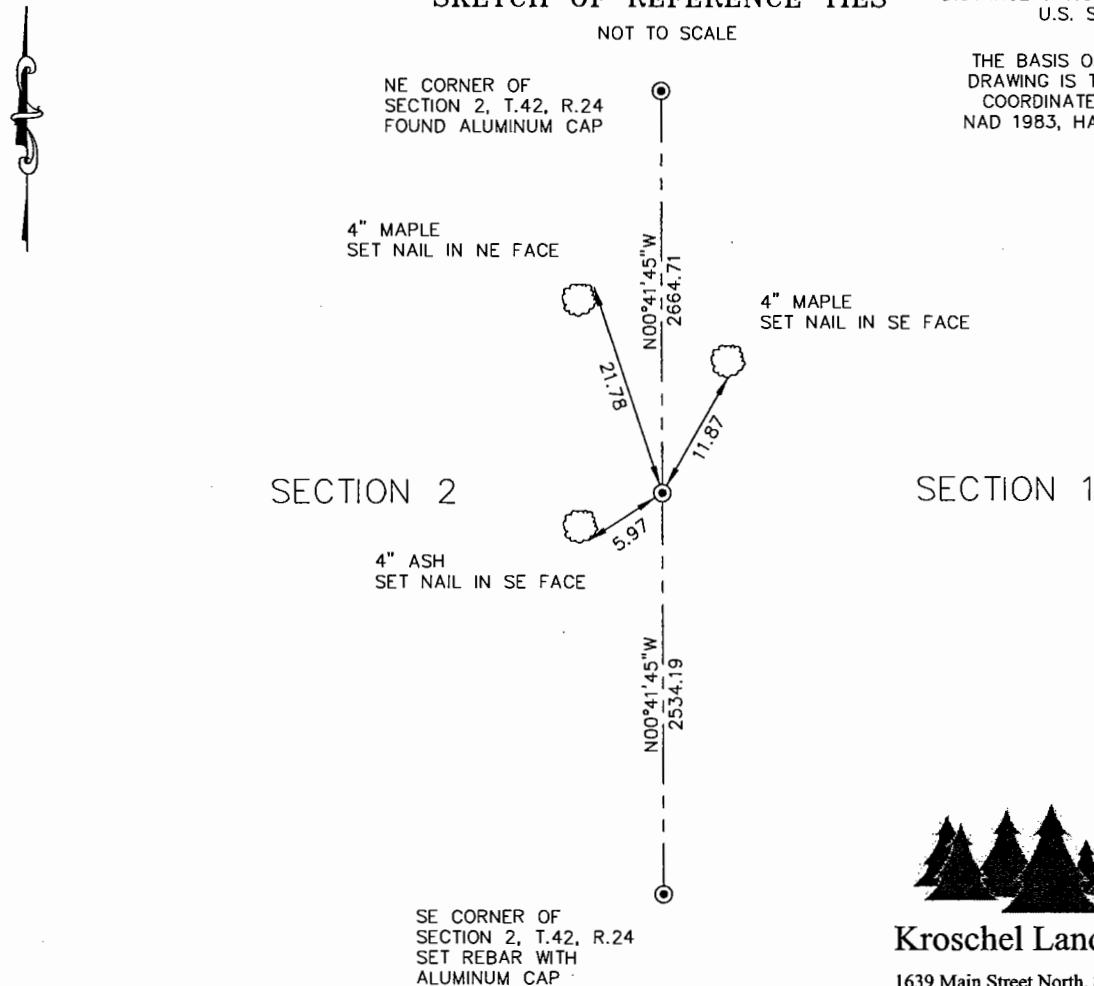
Note: NAD 1983, HARN 1996 Adjustment  
coordinates are NOT compatible with  
NAD 1983 coordinates  
Note: 1 Meter = 3937/1200 U.S. Survey Feet

## SKETCH OF REFERENCE TIES

DISTANCE UNITS FOR THIS DRAWING IS  
U.S. SURVEY FEET

NOT TO SCALE

THE BASIS OF BEARINGS FOR THIS  
DRAWING IS THE KANABEC COUNTY  
COORDINATE SYSTEM BY MNDOT,  
NAD 1983, HARN 1996 ADJUSTMENT



**Kroschel Land Surveyors, Inc.**

1639 Main Street North, Suite 6, Pine City, MN 55063  
Phone: 320-629-3267 Fax: 320-629-0176

Statement of evidence relative to this corner location is on back of page.

I hereby certify that this report was prepared by me or under my direct supervision, that the United States public land survey monument record is correct and complete to the best of my knowledge and belief, and that I am a duly Licensed Land Surveyor under the laws of the State of Minnesota.

Tyler J. Kroschel, County Surveyor

License No. 44490

3/26/2024  
Date

### OFFICE OF THE COUNTY RECORDER

County of Kanabec

I hereby certify that this document was filed in the County Recorder's office at \_\_\_\_\_ .M. on the \_\_\_\_\_ day of \_\_\_\_\_ A.D., 20\_\_\_\_  
County Recorder \_\_\_\_\_

\_\_\_\_\_, Deputy

DOCUMENT NO. \_\_\_\_\_

Statement of Evidence:

In December of 1855, Deputy Surveyor Isaac Banker set a post to mark the East Quarter Corner of Section 2, Township 42 North, Range 24 West, 4th Principal Meridian.

Reference ties were taken to:

- 10 inch Tamarack at North 24 degrees 15 minutes East a distance of 13 links
- 16 inch Tamarack at North 16 degrees 30 minutes East a distance of 21 links

All of the original Government corner evidence was searched for. None was found.

There is no retracement survey information on file for this corner.

2011- Paul Schoborg, LS 14700 made a survey in Section 2, T.42, R.24 for Jon Kennedy. Schoborg's map shows a computed position for the East Quarter corner of Section 2, but no monument was physically placed. It appears he computed this position at a single proportioned measurement between the Northeast corner of Section 2 and the Southeast corner of Section 2.

In October 2023, I made a survey around Section 1, Township 42 North, Range 24 West, 4th Principal Meridian for Stephen Hennen to locate existing monuments, occupation lines, and establish search areas.

There are no lines of occupation in this area. After reviewing the topography distances in the GLO running notes, I noted that many of the swamp edges and topography features called for simply do not exist. In my experience, this is not unusual for Deputy Surveyor Banker. The measured distance from the Southeast corner of Section 2 to the Northeast corner of Section 2 is approximately 217 feet short of the GLO running notes. I considered many different locations for this corner using the GLO topography notes, but failed to find any location that could satisfy the record dimensions within reason.

I determined the corner lost and on 10/25/2023 I set a 7/8" x 36" Rebar Monument with Aluminum cap at a single proportioned location, per the dimensions shown on the front of this tie sheet. Established reference ties and assigned Kanabec County Coordinates.

The location of the 7/8" Rebar with Aluminum Cap was determined to be the best available evidence of the original corner monument location.