

CERTIFICATE OF LOCATION OF GOVERNMENT CORNER

North Quarter Corner of Section 12, Township 42 North, Range 24 West,
4th Principal Meridian, Kanabec County, State of Minnesota

At the corner location shown on the sketch:
On 10/25/2023 set a 7/8" x 36" Rebar with Aluminum cap.

Kanabec County U.S. Survey Feet Coordinates
NAD 1983, HARN 1996 Adjustment
Obtained by RTK GPS observation
Northing: 251260.0374
Easting: 394801.0498

Note: NAD 1983, HARN 1996 Adjustment
coordinates are NOT compatible with
NAD 1983 coordinates

Note: 1 Meter = 3937/1200 U.S. Survey Feet

SKETCH OF REFERENCE TIES

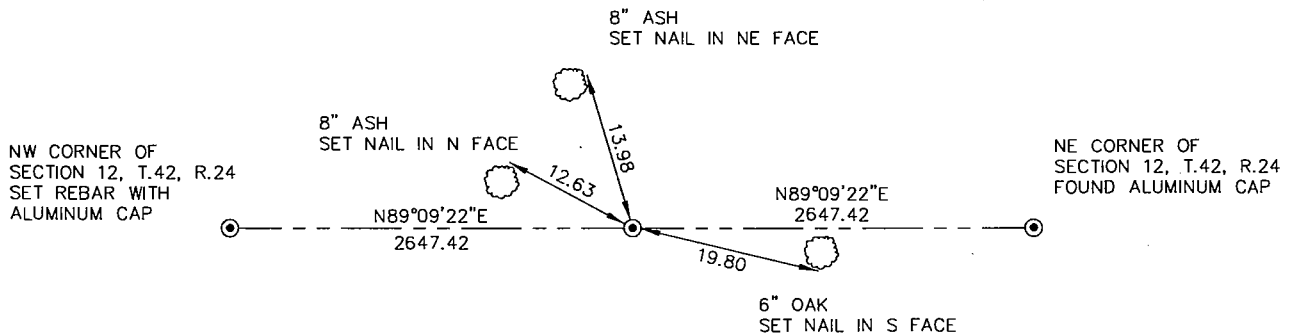
NOT TO SCALE

DISTANCE UNITS FOR THIS DRAWING IS
U.S. SURVEY FEET

THE BASIS OF BEARINGS FOR THIS
DRAWING IS THE KANABEC COUNTY
COORDINATE SYSTEM BY MNDOT,
NAD 1983, HARN 1996 ADJUSTMENT



SECTION 1



SECTION 12



Kroschel Land Surveyors, Inc.

1639 Main Street North, Suite 6, Pine City, MN 55063
Phone: 320-629-3267 Fax: 320-629-0176

Statement of evidence relative to this corner location is on back of page.

I hereby certify that this report was prepared by me or under my direct supervision, that the United States public land survey monument record is correct and complete to the best of my knowledge and belief, and that I am a duly Licensed Land Surveyor under the laws of the State of Minnesota.

Tyler J. Kroschel, County Surveyor

License No. 44490

3/26/2024
Date

OFFICE OF THE COUNTY RECORDER

County of Kanabec

I hereby certify that this document was filed in the County Recorder's office at _____ .M. on the _____ day of _____ A.D., 20____

County Recorder _____, Deputy

DOCUMENT NO. _____

Statement of Evidence:

In December of 1855, Deputy Surveyor Isaac Banker set a post to mark the North Quarter Corner of Section 12, Township 42 North, Range 24 West, 4th Principal Meridian.

Reference ties were taken to:

14 inch Sugar at North 19 degrees East a distance of 9 links

9 inch Balsam at South 35 degrees 45 minutes East a distance of 2 links

All of the original Government corner evidence was searched for. None was found.

There is no retracement survey information on file for this corner.

In October 2023, I made a survey around Section 1, Township 42 North, Range 24 West, 4th Principal Meridian for Stephen Hennen to locate existing monuments, occupation lines, and establish search areas.

There are no definite lines of occupation in this area. I made search with a metal locator halfway and on-line between the Northeast and Southeast corners of Section 12. No evidence was found. I determined the corner lost and on 10/25/2023 I set a 7/8" x 36" Rebar Monument with Aluminum cap at a single proportioned location, per the dimensions shown on the front of this tie sheet. Established reference ties and assigned Kanabec County Coordinates.

The location of the 7/8" Rebar with Aluminum Cap was determined to be the best available evidence of the original corner monument location.