

CERTIFICATE OF LOCATION OF GOVERNMENT CORNER

Northeast Corner of Section 11, Township 42 North, Range 24 West,
4th Principal Meridian, Kanabec County, State of Minnesota

At the corner location shown on the sketch:
On 10/25/2023 set a 7/8" x 72" Rebar with Aluminum cap.

Kanabec County U.S. Survey Feet Coordinates
NAD 1983, HARN 1996 Adjustment
Obtained by RTK GPS observation
Northing: 251221.0469
Easting: 392153.9163

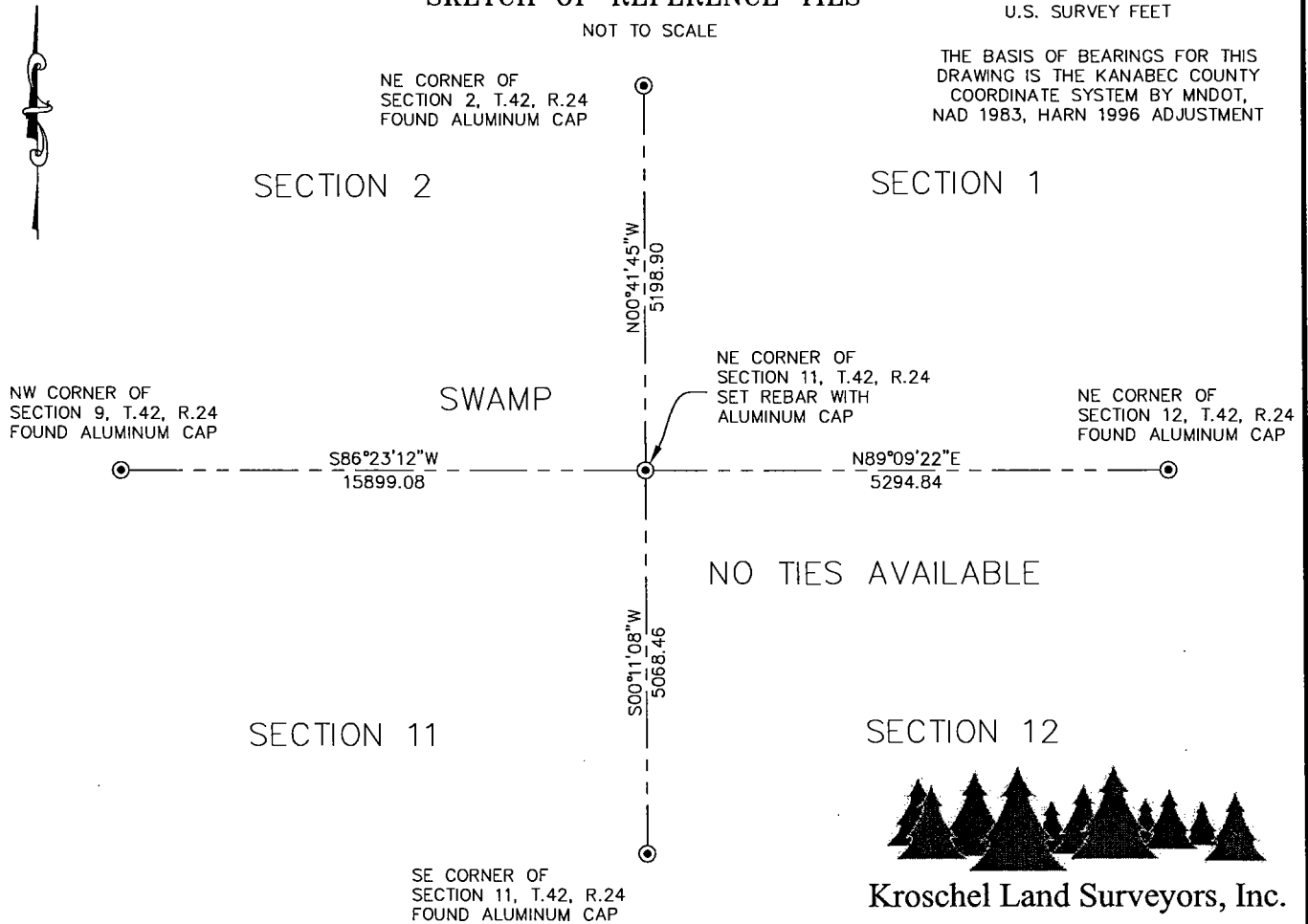
Note: NAD 1983, HARN 1996 Adjustment
coordinates are NOT compatible with
NAD 1983 coordinates
Note: 1 Meter = 3937/1200 U.S. Survey Feet

SKETCH OF REFERENCE TIES

DISTANCE UNITS FOR THIS DRAWING IS
U.S. SURVEY FEET

NOT TO SCALE

THE BASIS OF BEARINGS FOR THIS
DRAWING IS THE KANABEC COUNTY
COORDINATE SYSTEM BY MNDOT,
NAD 1983, HARN 1996 ADJUSTMENT



Kroschel Land Surveyors, Inc.
1639 Main Street North, Suite 6, Pine City, MN 55063
Phone: 320-629-3267 Fax: 320-629-0176

Statement of evidence relative to this corner location is on back of page.

I hereby certify that this report was prepared by me or under my direct supervision, that the United States public land survey monument record is correct and complete to the best of my knowledge and belief, and that I am a duly Licensed Land Surveyor under the laws of the State of Minnesota.

Tyler J. Kroschel, County Surveyor

3/26/2024
Date

License No. 44490

OFFICE OF THE COUNTY RECORDER
County of Kanabec

I hereby certify that this document was filed in the County Recorder's office at _____ M. on the _____ day of _____ A.D., 20____
County Recorder _____, Deputy

DOCUMENT NO. _____

Statement of Evidence:

In December of 1855, Deputy Surveyor Isaac Banker set a post to mark the Northeast Corner of Section 11, Township 42 North, Range 24 West, 4th Principal Meridian.

Reference ties were taken to:

14 inch Tamarack at North 27 degrees 15 minutes East a distance of 21 links

21 inch Tamarack at North 27 degrees West a distance of 48 links

18 inch Tamarack at South 60 degrees West a distance of 28 links

16 inch Tamarack at South 26 degrees 30 minutes East a distance of 49 links

All of the original Government corner evidence was searched for. None was found.

There is no retracement survey information on file for this corner.

2011— Paul Schoborg, LS 14700 made a survey in Section 2, T.42, R.24 for Jon Kennedy. Schoborg's map shows a computed position for the Southeast corner of Section 2, but no monument was physically placed. It appears he computed this position at a single proportioned measurement between the Northeast corner of Section 2 and the Southeast corner of Section 11.

In October 2023, I made a survey around Section 1, Township 42 North, Range 24 West, 4th Principal Meridian for Stephen Hennen to locate existing monuments, occupation lines, and establish search areas.

There are no lines of occupation in this area. The corner falls in a very wet tamarack swamp. After reviewing the topography distances in the GLO running notes, I noted that many of the swamp edges and topography features called for simply did not exist. In my experience, this is not unusual for Deputy Surveyor Banker. The measured distance from the Southeast corner of Section 11 to the Northeast corner of Section 2 is approximately 429 feet short of the GLO running notes. I considered many different locations for this corner using the GLO topography notes, but failed to find any location that could satisfy the record dimensions within reason.

I determined the corner lost and on 10/25/2023 I set a 7/8" x 72" Rebar Monument with Aluminum cap at a double proportioned location, per the dimensions shown on the front of this tie sheet. Assigned Kanabec County Coordinates.

The single proportioned position shown on Mr. Schoborg's map is not an appropriate method for determining this corner and does not follow the methods as outlined in the Manual of Instructions for the Survey of the Public Lands of the United States.

The location of the 7/8" Rebar with Aluminum Cap was determined to be the best available evidence of the original corner monument location.