

CERTIFICATE OF LOCATION OF GOVERNMENT CORNER

EAST QUARTER Corner of Section 14, Township 42, Range 24, 4TH P.M.

STATE OF MINNESOTA, County of KANABEC

At the corner location shown on the sketch:
SET A KANABEC COUNTY MONUMENT

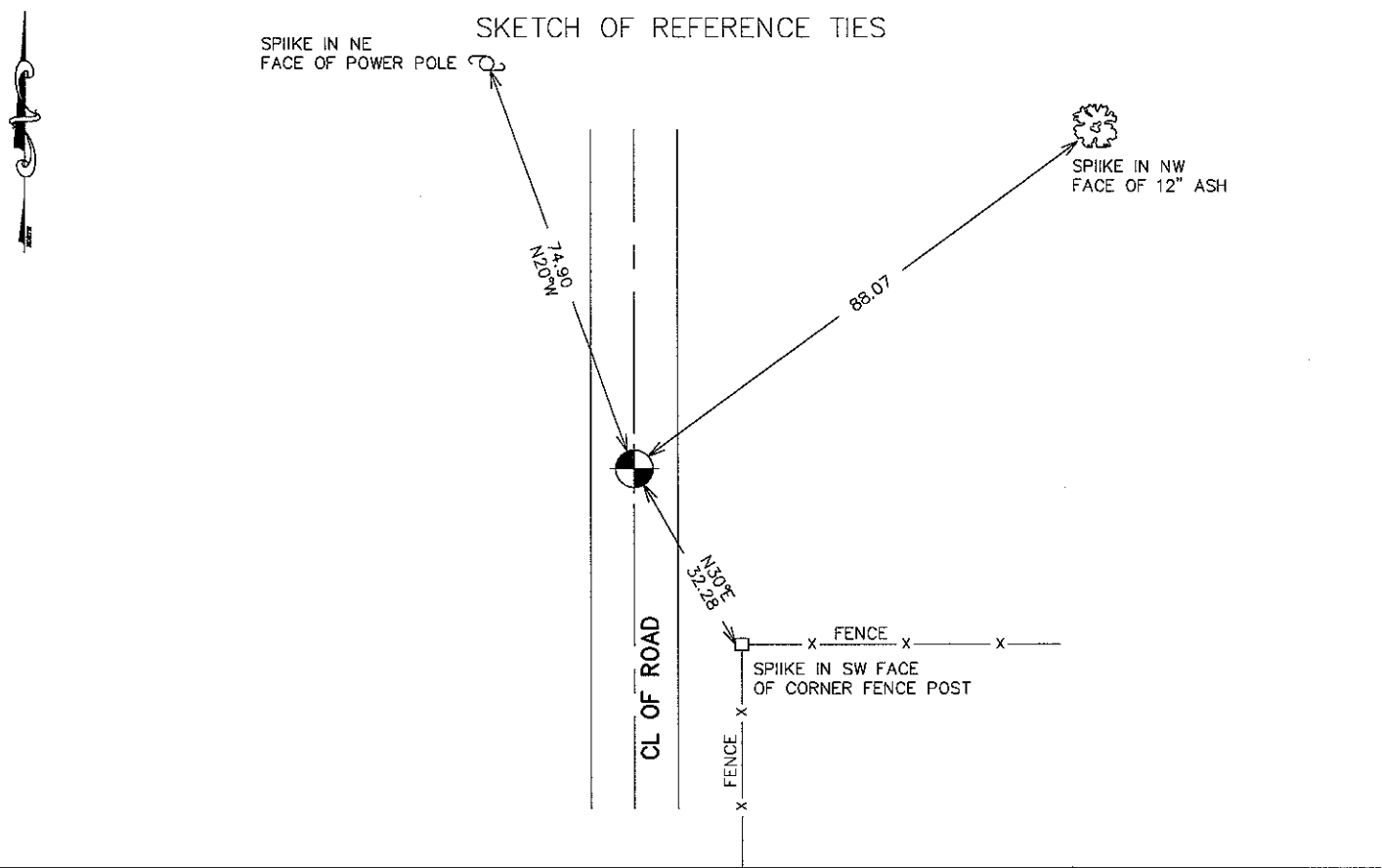
Kanabec County U.S. Survey Feet Coordinates
NAD 1983, HARN 1996 Adjustment
Obtained by RTK GPS Observation

Northing= 243545.96

Easting= 392054.74

Note: NAD 1983, HARN 1996 Adjustment
coordinates are NOT compatible with
NAD 1983 coordinates

Note: 1 Meter=3937/1200 U.S. Survey Feet



Statement of evidence relative to this corner location is on back of page.

I hereby certify that this document and the data contained herein was prepared by me or under my direct supervision.

Ernest Reed
Signature

2-02-2010
Date

Registration No. 9808

Land Surveyor, Professional Engineer

County Surveyor, County Engineer

OFFICE OF THE COUNTY RECORDER

County of _____

I hereby certify that this document was filed in the County Recorder's office at _____ M. on the _____ day of _____ A.D., 20____

County Recorder _____

BY _____ Deputy

DOCUMENT NO. _____

E 1/4 CORNER, SEC. 14, T42, R24

STATEMENT OF EVIDENCE

ORIGINAL GOVERNMENT POST WAS SET ON DECEMBER 6, 1855 BY DEPUTY SURVEYOR ISAAC BANKER AND 2 BEARING TREES ESTABLISHED. NO VISIBLE EVIDENCE OF THE POST OR BEARING TREES REMAIN TODAY.

THERE IS A ROAD OPENING ON FILE AT THE COUNTY AUDITOR'S OFFICE, DATED NOVEMBER 15, 1901, FROM THE SE CORNER OF SEC. 14 TO THE E 1/4 CORNER OF SEC. 14. NO SURVEY WAS MADE FOR THE ROAD OPENING.

JOHN NELSON DID A SURVEY IN APRIL 1909 ALONG THE EAST LINE OF SEC. 14 AND NOTED GOVERNMENT WITNESS AT THE E 1/4 CORNER AND NE CORNER OF SEC. 14. JOHN MEASURED 5192.88 FEET IN 1901 AND TODAY WE MEASURE 5208.3 FEET.

THIS CORNER FALLS IN THE CENTERLINE OF A MINIMUM MAINTENANCE ROAD BUILT OVER A SWAMPY AREA. THERE WAS A CULVERT RUNNING ACROSS THE ROAD IN THIS AREA SO NO EXCAVATION WAS DONE.

WE ACCEPTED THE CENTERLINE OF THE ROAD AS THE EAST-WEST POSITION AND SET IT AT A PRORATED DISTANCE DETERMINED BY JOHN NELSON'S SURVEY.

WE SET A KANABEC COUNTY MONUMENT, TOOK TIES AND ESTABLISHED KANABEC COUNTY COORDINATES ON THIS POSITION USING G.P.S. EQUIPMENT.