

4224056

# CERTIFICATE OF LOCATION OF GOVERNMENT CORNER

NORTHEAST Corner of Section 23, Township 42, Range 24, 4TH P.M.  
STATE OF MINNESOTA, County of KANABEC

At the corner location shown on the sketch:  
FOUND A KANABEC COUNTY CAST IRON MONUMENT.

Kanabec County U.S. Survey Feet Coordinates  
NAD 1983, HARN 1996 Adjustment  
Obtained by RTK GPS Observation

Northing= 240947.26

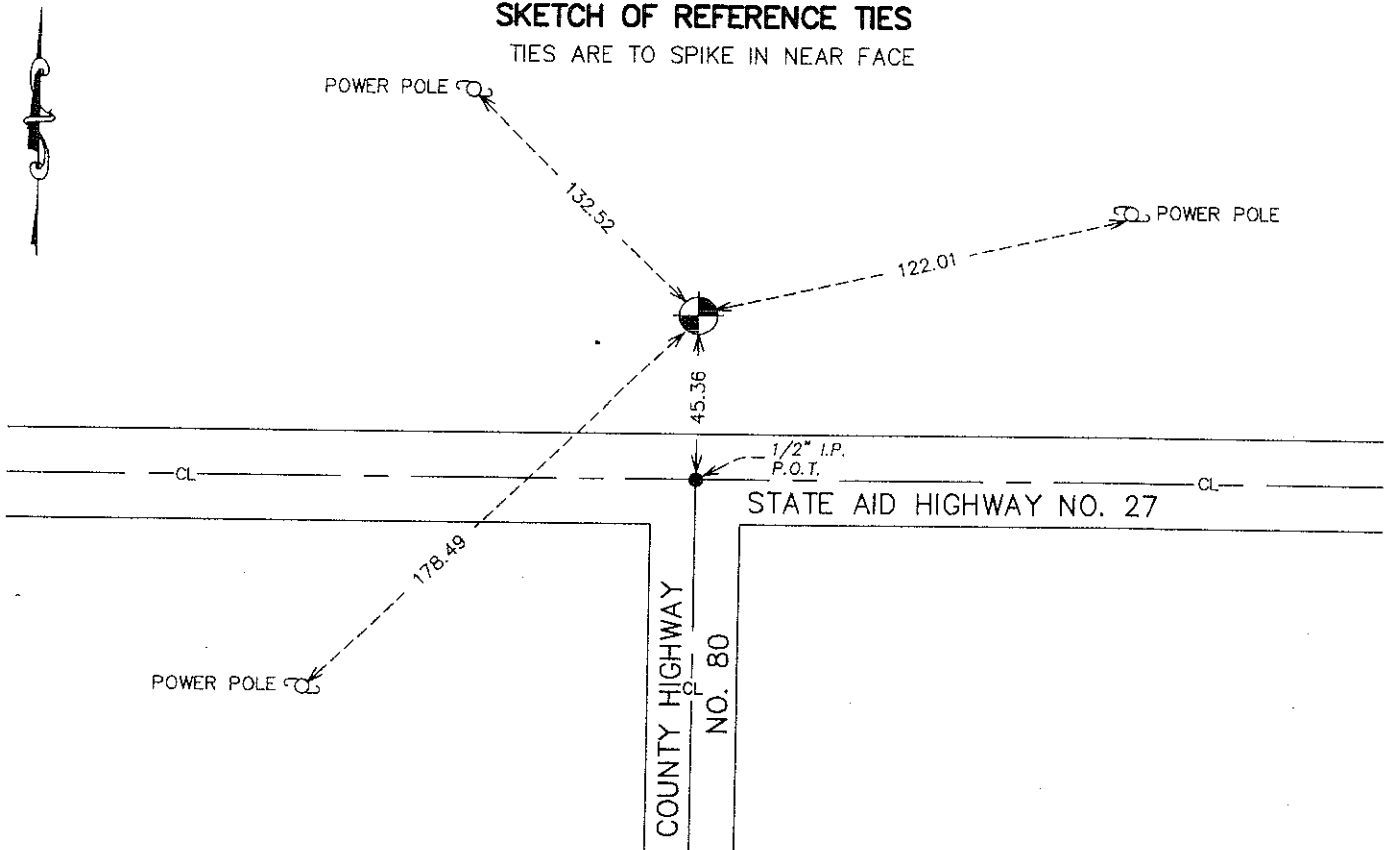
Easting= 391972.24

Note: NAD 1983, HARN 1996 Adjustment  
coordinates are NOT compatible with  
NAD 1983 coordinates

Note: 1 Meter=3937/1200 U.S. Survey Feet

## SKETCH OF REFERENCE TIES

TIES ARE TO SPIKE IN NEAR FACE



Statement of evidence relative to this corner location is on back of page.

I hereby certify that this document and the data contained herein was prepared by me or under my direct supervision.

Ernest J. [Signature]  
Signature

2-07-2008  
Date

Registration No. 9808

Land Surveyor,  Professional Engineer

County Surveyor,  County Engineer

## OFFICE OF THE COUNTY RECORDER

County of \_\_\_\_\_

I hereby certify that this document was filed in the County Recorder's office at \_\_\_\_\_ M. on the

\_\_\_\_\_ day of \_\_\_\_\_ A.D., 20\_\_

County Recorder \_\_\_\_\_

BY \_\_\_\_\_ Deputy

DOCUMENT NO. \_\_\_\_\_

NORTHEAST CORNER SECTION 23, TOWNSHIP 42, RANGE 24

**STATEMENT OF EVIDENCE**

ALL OF THE ORIGINAL BEARING TREES ARE NOW GONE.

THE STATE DEPARTMENT OF TRANSPORTATION'S RECORDS FROM 1924 SHOW A STONE MONUMENT AT THIS CORNER. THEIR CURRENT RIGHT OF WAY MAP SHOWS THIS CORNER 45.4 FEET NORTH OF THE CENTERLINE OF STATE HIGHWAY NO. 27.

IN APRIL OF 1988, M.B. RUDE FOUND A CAST IRON MONUMENT WHICH FITS THE STATE DEPARTMENT OF TRANSPORTATION RIGHT OF WAY MAP FOR STATE HIGHWAY NO. 27 AND ACCEPTED THIS LOCATION AS THE PERPETUATED LOCATION OF THE STAONE MONUMENT FROM 1924.

IN JANUARY 2006 E.G. RUD & SONS, INC. ESTABLISHED KANABEC COUNTY COORDINATES ON THIS POSITION USING GLOBAL POSITIONING SYSTEM (G.P.S.) EQUIPMENT.