

CERTIFICATE OF LOCATION OF GOVERNMENT CORNER

NORTHEAST Corner of Section 26, Township 42, Range 24, 4TH P.M.
 STATE OF MINNESOTA, County of KANABEC

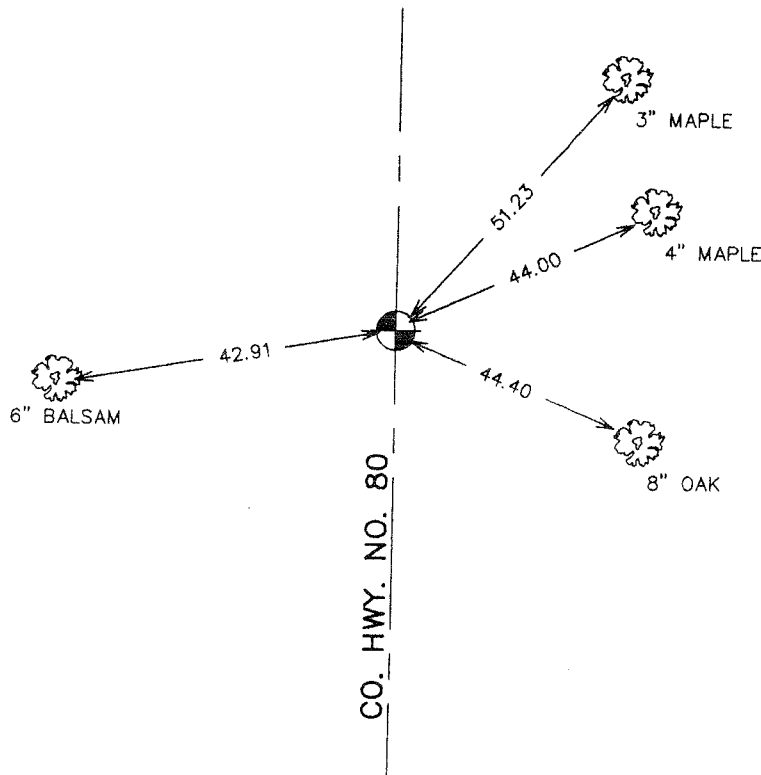
At the corner location shown on the sketch:
 FOUND THIS MONUMENT
 AND ESTABLISHED G.P.S. COORDINATES ON ITS LOCATION.

Kanabec County U.S. Survey Feet Coordinates
 NAD 1983, HARN 1996 Adjustment
 Obtained by RTK GPS Observation

Northing= 235672.07
 Easting= 391880.74

Note: NAD 1983, HARN 1996 Adjustment
 coordinates are NOT compatible with
 NAD 1983 coordinates
 Note: 1 Meter=3937/1200 U.S. Survey Feet

SKETCH OF REFERENCE TIES



TIES ARE TO A SPK. IN
 BLAZE IN NEAR FACE

Statement of evidence relative to this corner location is on back of page.

I hereby certify that this document and the data
 contained herein was prepared by me or under
 my direct supervision.

Ernest Reed 11-1-2006
 Signature Date

Registration No. Minn No 9808

- Land Surveyor, Professional Engineer
 County Surveyor, County Engineer

OFFICE OF THE COUNTY RECORDER

County of _____

I hereby certify that this document was filed in
 the County Recorder's office at _____ M. on the
 _____ day of _____ A.D., 20____

County Recorder _____

BY _____ Deputy

DOCUMENT NO. _____

NORTHEAST CORNER SECTION 26, T42, R24

STATEMENT OF EVIDENCE

ALL OF THE ORIGINAL BEARING TREES ARE NOW GONE.

THERE IS A TOWN ROAD ORDER DATED IN 1901, ON FILE AT THE COUNTY AUDITOR'S OFFICE FOR A TOWN ROAD TO START AT THE EAST QUARTER CORNER OF SECTION 26 AND RUN NORTH ON THE SECTION LINE BETWEEN SECTIONS 25 AND 26, 23 AND 24, 13 AND 14 TO THE EAST QUARTER CORNER OF SECTION 14.

THERE IS AN EXISTING ROAD RUNNING NORTH AND SOUTH AT THIS CORNER, AND NO LINES OF OCCUPATION EAST OR WEST.

IN APRIL OF 1988 M.B. RUDE RAN A SURVEY FROM THE SOUTH TOWNSHIP LINE NORTH TO THE NORTHEAST CORNER OF SECTION 23 TO LOCATE EXISTING MONUMENTS, LINES OF OCCUPATION AND SEARCH AREAS.

ON MAY 2ND, 1988, AN EXCAVATION WAS MADE WITH THE COUNTY BACKHOE AT THE CENTERLINE OF THE ROAD AND PROPORTIONAL MEASUREMENT BETWEEN THE EAST QUARTER CORNER OF SECTION 26 AND THE NORTHEAST CORNER OF SECTION 23. NO EVIDENCE WAS FOUND IN THE EXCAVATION.

THIS CORNER WAS SET IN THE CENTERLINE OF THE EXISTING NORTH-SOUTH ROAD PER TOWN ROAD ORDER AND AT A PROPORTIONAL DISTANCE BETWEEN THE EAST QUARTER CORNER OF SECTION 26 AND THE NORTHEAST CORNER OF SECTION 23.

IN FEBRUARY 2006, E.G. RUD FOUND THIS MONUMENT AND ESTABLISHED COUNTY COORDINATES USING G.P.S. EQUIPMENT.