

# CERTIFICATE OF LOCATION OF GOVERNMENT CORNER

EAST QUARTER Corner of Section 26, Township 42, Range 24, 4TH P.M.

STATE OF MINNESOTA, County of KANABEC

At the corner location shown on the sketch:  
FOUND THIS MOUMENT  
AND ESTABLISHED G.P.S. COORDINATES ON ITS LOCATION.

Kanabec County U.S. Survey Feet Coordinates  
NAD 1983, HARN 1996 Adjustment  
Obtained by RTK GPS Observation

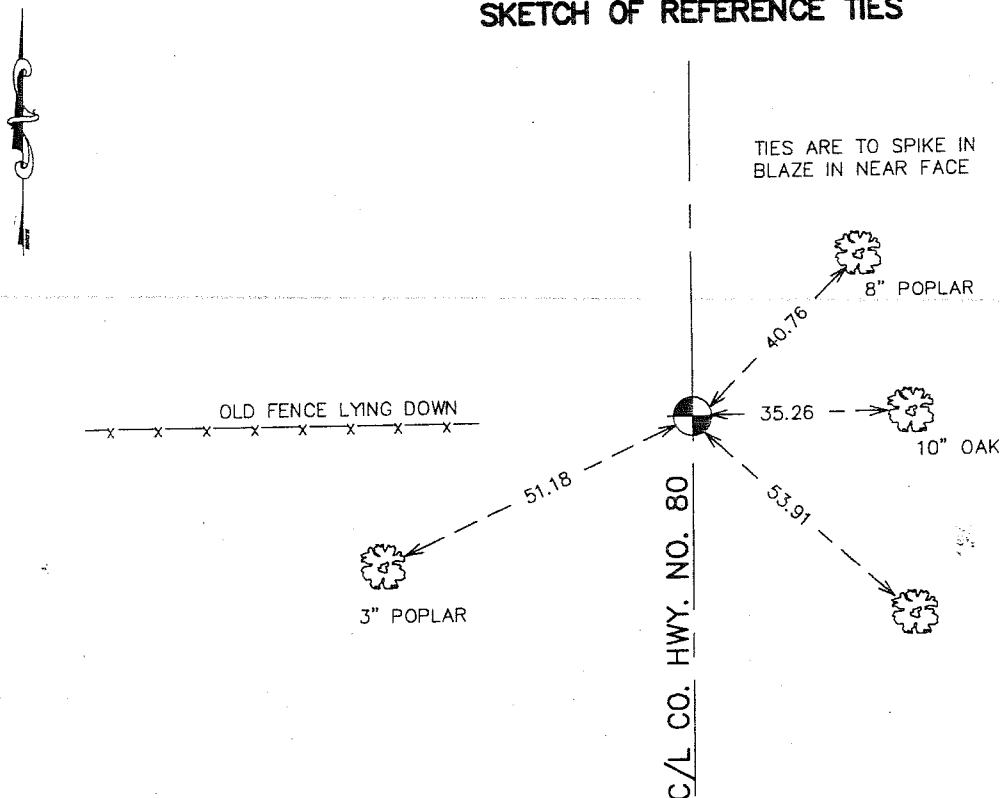
Northing= 233034.92

Easting= 391922.06

Note: NAD 1983, HARN 1996 Adjustment  
coordinates are NOT compatible with  
NAD 1983 coordinates

Note: 1 Meter=3937/1200 U.S. Survey Feet

## SKETCH OF REFERENCE TIES



Statement of evidence relative to this corner location is on back of page.

I hereby certify that this document and the data  
contained herein was prepared by me or under  
my direct supervision.

Ernst J. Reed 2-22-2007  
Signature Date

Registration No. Minn No 9808

Land Surveyor,  Professional Engineer

County Surveyor,  County Engineer

## OFFICE OF THE COUNTY RECORDER

County of \_\_\_\_\_

I hereby certify that this document was filed in  
the County Recorder's office at \_\_\_\_\_ M. on the

\_\_\_\_\_ day of \_\_\_\_\_ A.D., 20 \_\_\_\_\_

County Recorder \_\_\_\_\_

BY \_\_\_\_\_ Deputy

DOCUMENT NO. \_\_\_\_\_

EAST QUARTER CORNER SECTION 26, T42, R24

**STATEMENT OF EVIDENCE**

ALL OF THE ORIGINAL BEARING TREES ARE NOW GONE.

THERE IS A TOWN ROAD ORDER ON FILE DATED JANUARY OF 1901, SURVEYED BY JOHN NELSON, FOR A ROAD STARTING AT THE EAST QUARTER CORNER OF SECTIONS 26 AND RUNNING SOUTH ALONG THE SECTION LINE BETWEEN SECTIONS 25, 26, 35, AND 36, TO THE TOWN LINE.

THERE IS A NORTH-SOUTH ROAD AND AN OLD FENCE LYING DOWN WEST AT THIS LOCATION.

IN APRIL OF 1988, M.B. RUDE RAN A SURVEY AROUND SECTIONS 23, 26, AND 35, TOWNSHIP 42, RANGE 24 TO LOCATE EXISTING MONUMENTS, LINES OF OCCUPATION AND SEARCH AREAS.

IN MAY OF 1988, AN EXCAVATION WAS MADE WITH THE COUNTY BACKHOE AT THE INTERSECTION OF THE NORTH-SOUTH ROAD AND THE OLD FENCE WEST. NO EVIDENCE WAS FOUND IN THE EXCAVATION.

ON MAY 10, 1988, A 7/8" BY 24" CAPPED REBAR WAS SET AT THE FENCE AND CENTERLINE OF THE ROAD LOCATION ACCEPTING IT AS THE PERPETUATED CORNER LOCATION. THIS LOCATION IS IN HARMONY WITH THE TOWN ROAD ORDER FROM 1901.

IN DECEMBER 2006 E.G. RUD AND SONS FOUND THIS MONUMENT AND ESTABLISHED KANABEC COUNTY COORDINATES ON THIS LOCATION USING G.P.S. EQUIPMENT.