

# CERTIFICATE OF LOCATION OF GOVERNMENT CORNER

EAST QUARTER Corner of Section 35, Township 42, Range 24, 4TH P.M.

STATE OF MINNESOTA, County of KANABEC

At the corner location shown on the sketch:  
ON 12/22/10 FOUND 1/2" IRON PIPE

Kanabec County U.S. Survey Feet Coordinates  
NAD 1983, HARN 1996 Adjustment  
Obtained by RTK GPS Observation

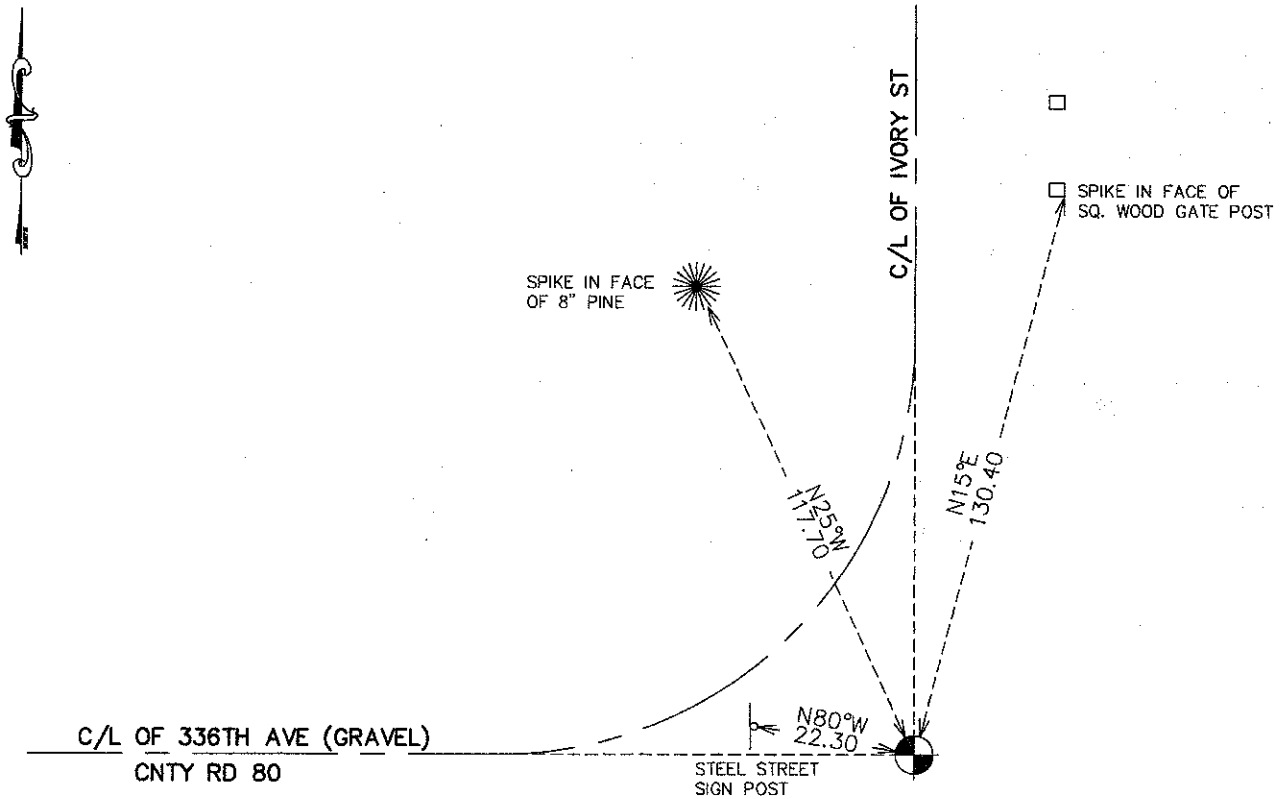
Northing= 227604.55

Easting= 391711.74

Note: NAD 1983, HARN 1996 Adjustment  
coordinates are NOT compatible with  
NAD 1983 coordinates

Note: 1 Meter=3937/1200 U.S. Survey Feet

## SKETCH OF REFERENCE TIES



Statement of evidence relative to this corner location is on back of page.

I hereby certify that this document and the data contained herein was prepared by me or under my direct supervision.

*Ernest J. Rud* 12-21-2011  
Signature Date

Registration No. 9808

Land Surveyor, [ ] Professional Engineer

[ ] County Surveyor, [ ] County Engineer

### OFFICE OF THE COUNTY RECORDER

County of \_\_\_\_\_

I hereby certify that this document was filed in the County Recorder's office at \_\_\_\_\_ M. on the \_\_\_\_\_ day of \_\_\_\_\_ A.D., 20\_\_\_\_

County Recorder \_\_\_\_\_

BY \_\_\_\_\_ Deputy

**DOCUMENT NO.** \_\_\_\_\_

E1/4 CORNER, SEC. 35, T42, R24

**STATEMENT OF EVIDENCE**

**THE ORIGINAL GOVERNMENT POST WAS SET ON DECEMBER 8, 1855 BY U.S. DEPUTY SURVEYOR ISAAC BANKER AND 2 BEARING TREES NOTED AS:**

**6" SPRUCE @ 6 LINKS BEARING S75°W**

**12" SPRUCE @ 31 LINKS BEARING N34°E**

**NO EVIDENCE REMAINS TODAY FOR THE CORNER OR BEARING TREES.**

**IN BOOK 1 OF 2 FOR SURVEYS, JOHN NELSON RECORDED A SURVEY DATED JANUARY 9, 1901 WHICH RAN FROM THE E1/4 CORNER OF SEC. 26 TO THE SE CORNER OF SEC. 35 AND THEN WENT TO THE S1/4 OF SEC. 35. HE DIDN'T SET OR INDICATE ANY POST AT THE E1/4 CORNER OF SEC. 35. NELSON MEASURED THE EAST LINE OF SEC. 35 TO BE 84 CHAINS OR 5544 FEET. TODAY WE MEASURED THIS LINE TO BE 5541.4 FEET.**

**THIS CORNER FALLS IN A SWAMP AT THE POINT OF INTERSECTION OF A GRAVEL ROAD RUNNING NORTH AND WEST. A 1/2" IRON PIPE WAS FOUND BY M.B. RUDE IN 1988 AND TIED IN HIS SURVEY.**

**NO RECORDS OF OTHER SUBSEQUENT SURVEYS COULD BE FOUND AT THE KANABEC COUNTY OFFICES.**

**IN DECEMBER 2010, E.G. RUD AND SONS FOUND THIS IRON PIPE, TOOK TIES AND ESTABLISHED KANABEC COUNTY COORDINATES ON THIS POSITION. THIS POSITIONS FITS THE CENTERLINE OF THE ROADS, IS WITHIN 7 FEET OF A SPLIT AND FITS LINES OF OCCUPATION IN SEC. 35.**