

CERTIFICATE OF LOCATION OF GOVERNMENT CORNER

^{SE}
Northeast Corner of Section ³³4, Township ⁴²41, Range 24, 4 P.M.

STATE OF MINNESOTA, County of Kanabec

At the corner location shown on the sketch

On 11-28-00 found a 1 1/2" Iron Pipe
Date

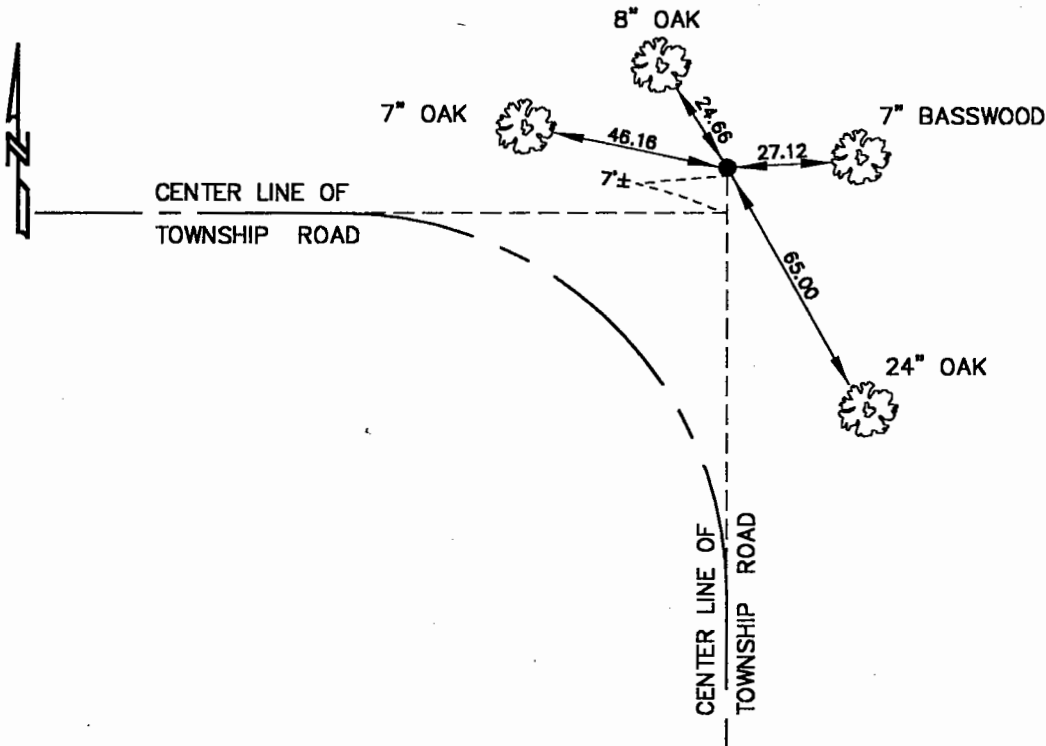
left monument as found, lowered monument, removed monument (explain)

On _____ placed a _____
Date

SKETCH OF REFERENCE TIES

TIES ARE TO SPIKE IN NEAR FACE

111/8



Statement of evidence relative to this corner location is on back of page.

I hereby certify that this document and the data contained herein was prepared by me or under my direct supervision.

[Signature] 12-7-00
Signature Date

Registration No. 8195

Land Surveyor, Professional Engineer

County Surveyor, County Engineer

OFFICE OF THE COUNTY RECORDER

County of _____

I hereby certify that this document was filed in the County Recorder's office at _____ M. on the _____ day of _____ A.D., 19 _____

County Recorder _____

By _____ Deputy

DOCUMENT NO. _____

LAND CORNER HISTORY

NE

4

NW Corner of Section 3 Township 41 Range 24

On Nov. 28th, 2000 we searched the area for evidence of this corner.

All of the original bearing trees are now gone.

In Dec. of 1988 Gregory Brick land surveyor no. 16085 made a survey in section 4 and found a 2 inch iron pipe at this corner.

Lewis Richards land owner in section 4 said that this corner had been marked with a iron pipe from 1914 until now.

We found a 1 ½ inch inside diameter iron pipe at this corner and measured west to a point set in the survey made by Gregory Brick to verify its location.

We accepted the found iron pipe as the perpetuated corner location.