

# CERTIFICATE OF LOCATION OF GOVERNMENT CORNER

WEST QUARTER Corner of Section 31, Township 42, Range 24, 4TH P.M.

STATE OF MINNESOTA, County of KANABEC

At the corner location shown on the sketch:  
SET A P.K.  
AND ESTABLISHED G.P.S. COORDINATES ON ITS LOCATION.

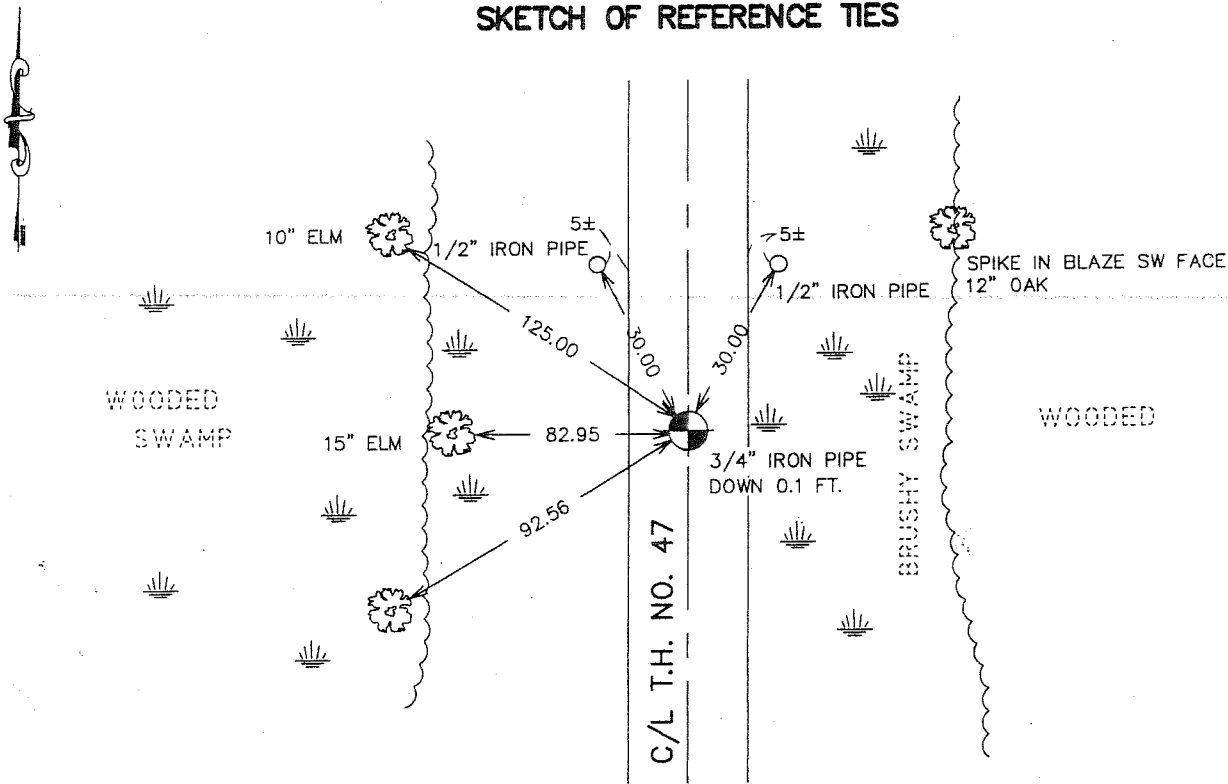
Kanabec County U.S. Survey Feet Coordinates  
NAD 1983, HARN 1996 Adjustment  
Obtained by RTK GPS Observation

Northing= 226396.54  
Easting= 364850.17

Note: NAD 1983, HARN 1996 Adjustment  
coordinates are NOT compatible with  
NAD 1983 coordinates

Note: 1 Meter=3937/1200 U.S. Survey Feet

## SKETCH OF REFERENCE TIES



Statement of evidence relative to this corner location is on back of page.

I hereby certify that this document and the data contained herein was prepared by me or under my direct supervision.

*[Signature]* 2-22-2007  
Signature Date

Registration No. Minn No 9808

- Land Surveyor,       Professional Engineer
- County Surveyor,     County Engineer

### OFFICE OF THE COUNTY RECORDER

County of \_\_\_\_\_

I hereby certify that this document was filed in the County Recorder's office at \_\_\_\_\_ M. on the \_\_\_\_\_ day of \_\_\_\_\_ A.D., 20\_\_\_\_

County Recorder \_\_\_\_\_

BY \_\_\_\_\_ Deputy

DOCUMENT NO. \_\_\_\_\_

WEST QUARTER CORNER SECTION 31, T42, R24

**STATEMENT OF EVIDENCE**

THE ORIGINAL CORNER AND BEARING TREES WERE ESTABLISHED ON NOVEMBER 7, 1849, BY DEPUTY SURVEYOR ISAAC BANKER. ANY VISIBLE EVIDENCE TO THE CORNER OR BEARING TREES NO LONGER REMAIN.

THIS CORNER FALLS IN THE CENTERLINE OF T.H. NO. 47 IN A SWAMPY AREA. MINNESOTA HIGHWAY DEPARTMENT RECORDS A 5" BY 5" CONCRETE POST WAS SET AT STATION 1306+96.6 AND LATER REPLACED WITH A 3/4" IRON PIPE. IN JANUARY 1982 JOHN OLIVER FILED A CERTIFICATE OF SECTION IN MILLE LACS COUNTY STATING HE FOUND THIS 3/4" IRON PIPE AT THE P.I. STATION OF 1306+96.6.

IN THE SUMMER OF 2006 MINNESOTA HIGHWAY DEPARTMENT DID A BITUMINOUS OVERLAY ON TRUNK HIGHWAY NO. 47. PRIOR TO THE OVERLAY MINNESOTA HIGHWAY DEPARTMENT SURVEY CREWS LOCATED MONUMENTS ALONG T.H. NO. 47 AND ESTABLISHED KANABEC COUNTY COORDINATES ON THE CORNERS. THE PIN AT 1306+96.6 WAS TIED IN AND IN DECEMBER 2006 E.G. RUD AND SONS SET A P.K. AT THIS LOCATION AT THE MINNESOTA HIGHWAY DEPARTMENT POSITION. A MONUMENT IS TO BE SET IN SPRING OF 2007.