

# CERTIFICATE OF LOCATION OF GOVERNMENT CORNER

SOUTHWEST Corner of Section 30, Township 42, Range 24, 4TH P.M.

STATE OF MINNESOTA, County of KANABEC

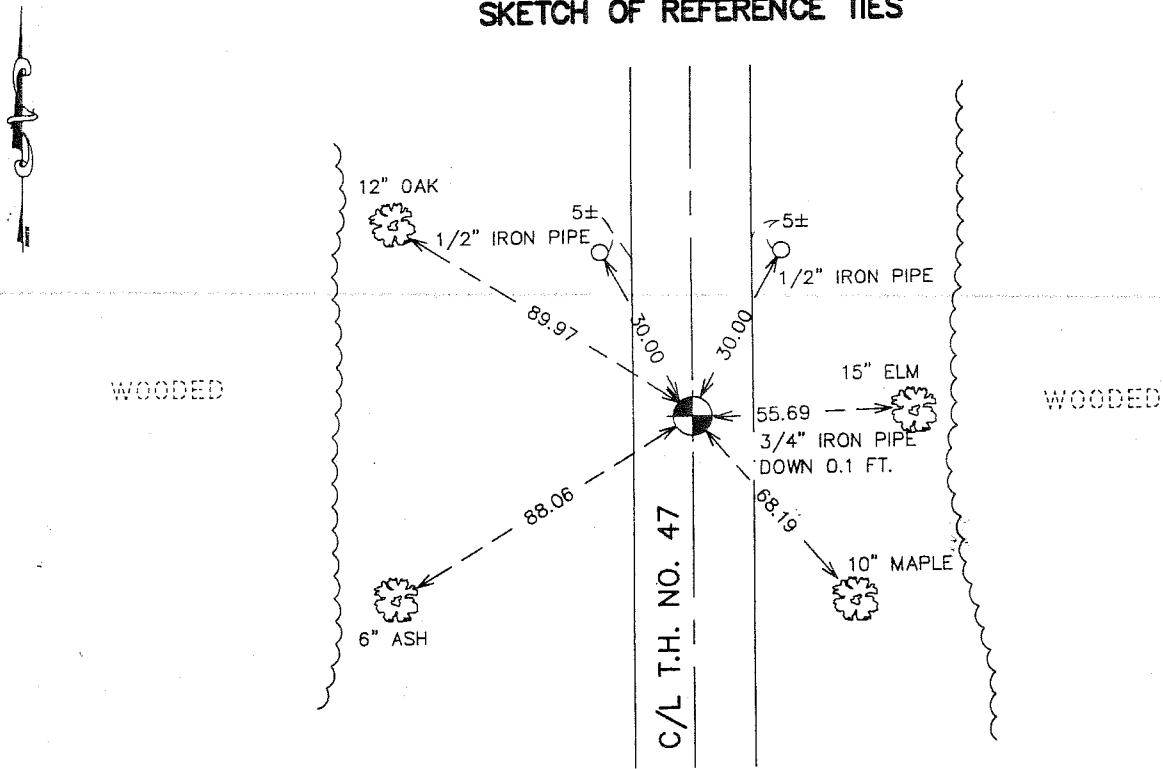
At the corner location shown on the sketch:  
 SET A P.K.  
 AND ESTABLISHED G.P.S. COORDINATES ON ITS LOCATION.

Kanabec County U.S. Survey Feet Coordinates  
 NAD 1983, HARN 1996 Adjustment  
 Obtained by RTK GPS Observation

Northing= 229051.19  
 Easting= 364849.50

Note: NAD 1983, HARN 1996 Adjustment  
 coordinates are NOT compatible with  
 NAD 1983 coordinates  
 Note: 1 Meter=3937/1200 U.S. Survey Feet

## SKETCH OF REFERENCE TIES



Statement of evidence relative to this corner location is on back of page.

I hereby certify that this document and the data contained herein was prepared by me or under my direct supervision.

Ernest Blud 2-22-2007  
 Signature Date

Registration No. None No 9208

Land Surveyor,  Professional Engineer  
 County Surveyor,  County Engineer

### OFFICE OF THE COUNTY RECORDER

County of \_\_\_\_\_

I hereby certify that this document was filed in the County Recorder's office at \_\_\_\_\_ M. on the \_\_\_\_\_ day of \_\_\_\_\_ A.D., 20\_\_\_\_

County Recorder \_\_\_\_\_

BY \_\_\_\_\_ Deputy

DOCUMENT NO. \_\_\_\_\_

## SOUTHWEST CORNER SECTION 30, T42, R24

### **STATEMENT OF EVIDENCE**

THIS CORNER FALLS IN THE CENTERLINE OF STATE HIGHWAY NO. 47 AND ALL OF THE ORIGINAL BEARING TREES ARE NOW GONE.

THE DEPARTMENT OF TRANSPORTATION'S RIGHT OF WAY MAP FOR HIGHWAY NO. 47 SHOWS A 5" CONCRETE POST WAS IN PLACE AT THIS CORNER, P.I. STATION 1333 PLUS 52.2, BEFORE HIGHWAY NO. 47 WAS CONSTRUCTED.

ON MARCH 17, 1981, M.B. RUDE FOUND A 3/4" IRON PIPE AT P.I. STATION 1333 PLUS 52.2 AND ACCEPTED THIS LOCATION AS THE BEST AVAILABLE EVIDENCE OF THE ORIGINAL CORNER LOCATION.

THERE WEREN'T ANY RECORDS AT MILLE LACS AND KANABEC COUNTIES WHICH INDICATED WHO SET THE 5" BY 5" CONCRETE POST FOUND BY THE HIGHWAY DEPARTMENT.

IN JANUARY 1982 JOHN OLIVER FOUND THIS IRON PIPE, TOOK TIES, AND FILED A CERTIFICATE OF LOCATION IN MILLE LACS COUNTY.

IN THE SUMMER OF 2006 TRUNK HIGHWAY NO. 47 WAS OVERLAID WITH A NEW BITUMINOUS WEARING COURSE. PRIOR TO THE OVERLAY MINNESOTA D.O.T. HAD LOCATED THIS PIPE AND ESTABLISHED KANABEC COUNTY COORDINATES ON THIS POSITION. THIS POSITION WAS WITHIN 0.04 OF A FOOT FROM THE POSITION E.G. RUD AND SONS HAD ESTABLISHED IN 2003.

IN DECEMBER 2006 E.G. RUD AND SONS RESET A PK AT THIS LOCATION WITH AN IRON PIPE TO BE SET IN THE SPRING OF 2007.